



Residential Park Home

Chertsey, Surrey, KT16

Omar Regency (35x18)



0800 954 1288

sales@sellmygroup.co.uk



£279,995

Mixnams Lane, Chertsey, Surrey, KT16 8QS

Inside the Omar Regency bungalow style park home, there is a lounge and dining area, a fully fitted kitchen with integrated appliances, a fitted bathroom and beautiful interior design. The home has two bedrooms. The master bedroom boasts a en-suite and storage space. The second bedroom is also a double and sits beside the family bathroom.

This is one of the largest residential park for persons (50+), with a strong community spirit and a thriving Social Club. A regular bus service goes from the park to Chertsey and Staines, both very near and providing excellent shopping facilities. A Health Centre is to be found at Chertsey, which can also be reached by a pleasant walk across the local golf course if you wish.

The M25 is only a short drive away and for commuters to London there is a main line station at Staines, reaching Waterloo in 30 minutes. There are many local places of interest to visit including Windsor Castle, Runnymede and Thorpe Park, which is very near to the park.

- Brand new home
- Car bay and garden shed
- Communal Bar Area
- Fully Fitted Kitchen
- Fully Furnished
- Immediate Occupancy Available
- Luxury 2 Bed Park Bungalow
- Over 50's
- Part Exchange Available

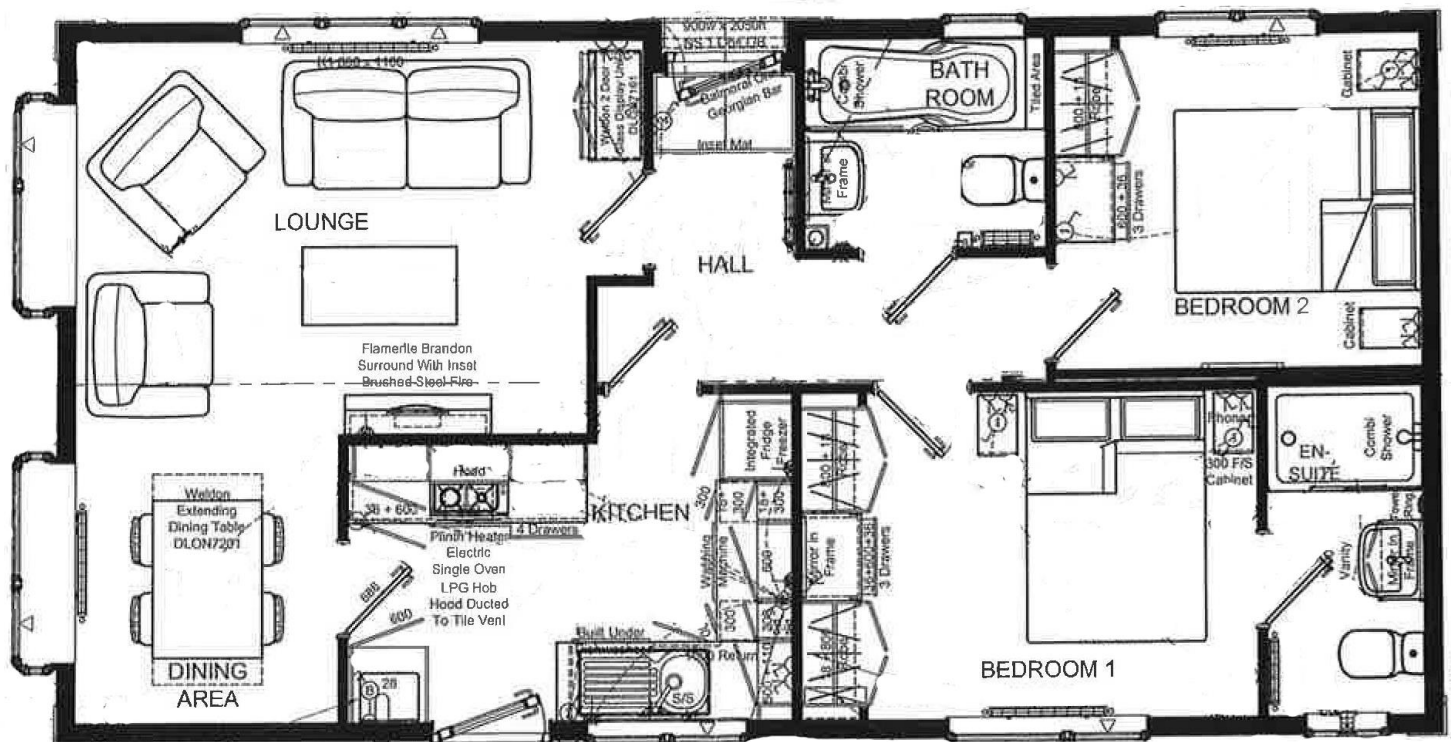
2 x  2 x 

Part Exchange with Quickmove Properties

Our customers benefit from speed, convenience, and certainty. Secure your dream park home without worrying about estate agents, viewings, negotiations, or the risk of a sale falling through.



Floor Plan



CONTACT DETAILS

0800 954 1288

sales@sellmygroup.co.uk

 **Sell my**
Park Home, Lodge
& Static Caravan

 **Quickmove**
PROPERTIES