



Turnham Green Terrace, London, W4 1QP

£599,950

WHITMAN & CO.

SALES · LETTINGS · COMMERCIAL

- Split-level two double bed maisonette
- Large secluded roof terrace
- Located just off Chiswick High Road
- 16' reception room
- Close to shops, cafes and restaurants
- Private front door/entrance

Tenure - Leasehold (93 years remaining)
 Service Charge - Approx. £1000 pa
 Ground Rent - £50 pa
 Local Authority - Hounslow
 Council Tax - Band D (£1607.00 pa)

THE PROPERTY

An exceptionally spacious two-bedroom Victorian maisonette with large roof terrace and ideally located for all amenities. Accommodation comprises two double bedrooms, white bathroom suite, 16' reception room, 12' fully fitted kitchen/breakfast room leading onto a large secluded roof terrace, cloakroom, private front door. Ideally situated in the heart of Chiswick offering close proximity to Turnham Green tube station along with the extensive shopping, bar and restaurant facilities on Chiswick High Road.

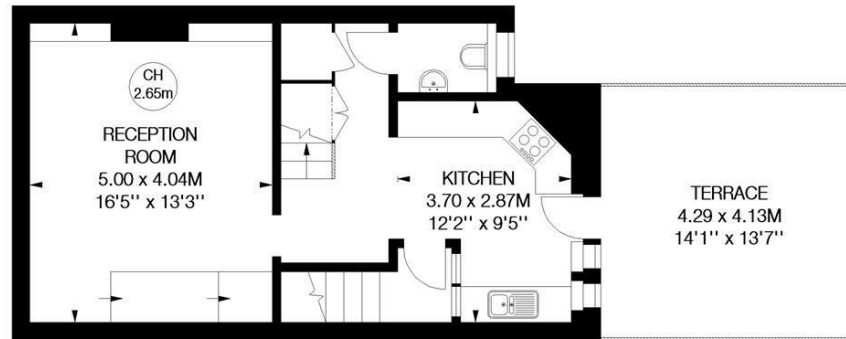
Turnham Green Terrace, W4

Approximate gross internal area
 91.97 sq m / 990 sq ft

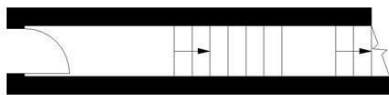
Key :
 CH - Ceiling Height



Second Floor



First Floor



Ground Floor
 Entrance

Not to scale, for guidance only and must not be relied upon as a statement of fact.
 All measurements and areas are approximate only

SITUATION



5-7 Turnham Green Terrace, Chiswick, London, W4 1RG

Tel 020 8747 8800

E-mail sales@whitmanandco.com

Website www.whitmanandco.com