



## Flat 1, 97 Palace Road

London, SW2 3LB

**Asking Price £500,000**

Galloways are delighted to bring to the market this beautiful two double bedroom Victorian conversion flat. The property is offered to the market in excellent condition and is situated in a great location for transport and shopping amenities. The flat benefits from having its own separate entrance, large storage cellar and direct access to a large communal garden. Viewings are highly recommended.

- A BEAUTIFUL TWO DOUBLE BEDROOM VICTORIAN CONVERSION
- TWO BATHROOMS
- OWN FRONT DOOR
- STORAGE ROOM
- TASTEFULLY DECORATED THROUGHOUT
- CONTEMPORARY FITTED BATHROOMS WITH UNDERFLOOR HEATING
- LARGE CELLAR
- COMMUNAL GARDEN
- 7 MINUTES WALK TO TULSE HILL STATION
- (WALKING TIMES ESTIMATED BY GOOGLE MAPS)

### Viewing

Please contact our Galloways West Norwood Office on if you wish to arrange a viewing appointment for this property or require further information.



2



2



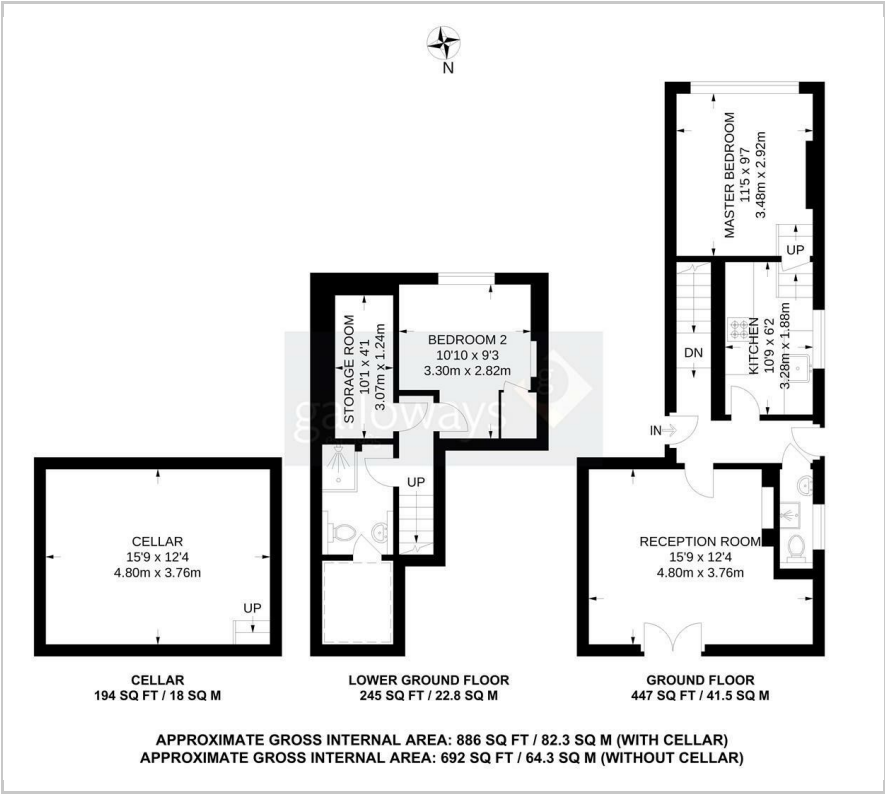
1



D



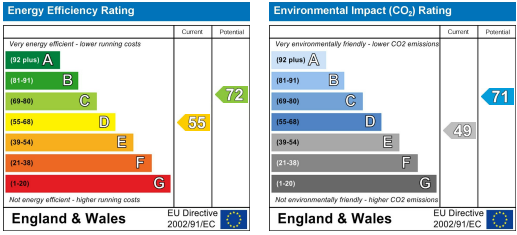
Floor Plan



Area Map



Energy Efficiency Graph



These particulars, whilst believed to be accurate are set out as a general outline only for guidance and do not constitute any part of an offer or contract. Intending purchasers should not rely on them as statements of representation of fact, but must satisfy themselves by inspection or otherwise as to their accuracy. No person in this firms employment has the authority to make or give any representation or warranty in respect of the property.