



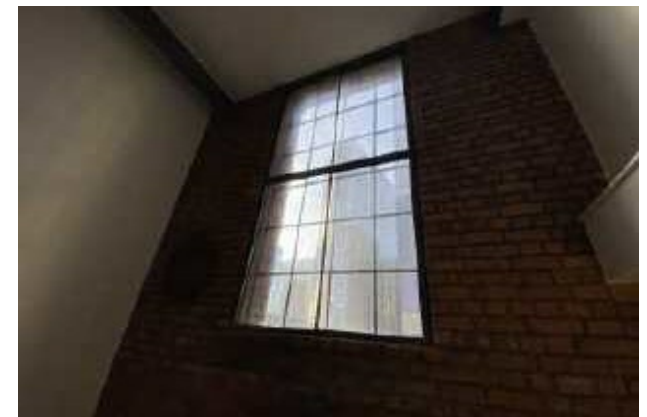
jordanfishwick

MANCHESTER
Sorting Office



Sorting Office, Manchester M3 1NJ

Offers in excess of £240,000



The Property

ONLINE VIDEO TOUR - <https://www.youtube.com/watch?v=kQXb-HG8EuM>

Jordan Fishwick are pleased to offer for sale this stunning TWO BEDROOM DUPLEX APARTMENT in the heart of Manchester City centre, which forms part of the former Royal Mail sorting office. The property oozes character with high ceilings, iron beams and exposed brickwork throughout which mixes perfectly with the modern living space, kitchen and bathroom. The apartment briefly comprises of: entrance hall, open plan living room, W/C, stairs to upper floor, two double bedrooms, a well appointed bathroom and a walk in wardrobe/storage cupboard. This popular development also

benefits from 24 hour on site concierge.

Directions

Sorting Office is located just over 5 minute walk to Spinningfields and Deansgate and offers easy access to Victoria train/metrolink station.

- Two Bedroom Apartment
- Stunning Conversion
- Close to Spinningfields
- Duplex Apartment
- Downstairs W/C
- Plenty of Character
- Well Presented Throughout

Postcode - M3 1NJ

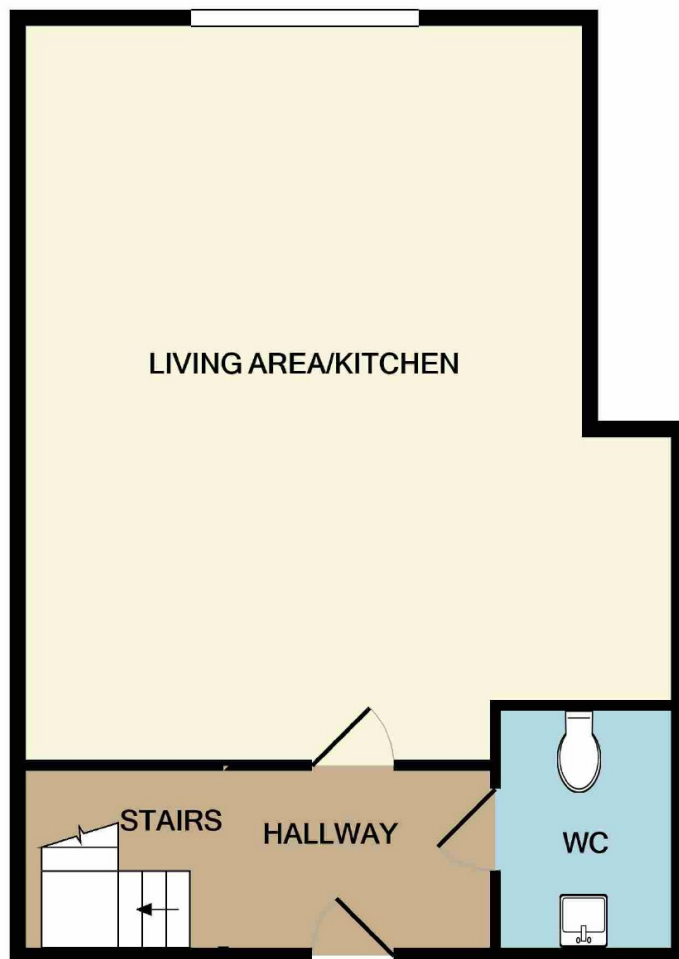
EPC Rating - B

Floor Area - 735 sq ft

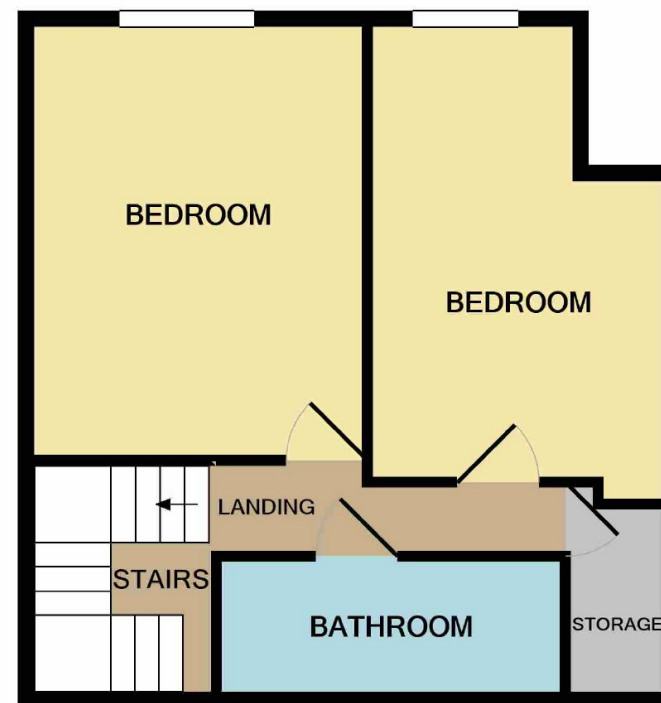
Local Authority - Manchester Council

Council Tax - Band E





GROUND FLOOR



1ST FLOOR

Measurements are approximate. Not to scale. Illustrative purposes only
Made with Metropix ©2020



These particulars are believed to be accurate but they are not guaranteed and do not form a contract. Neither Jordan Fishwick nor the vendor or lessor accept any responsibility in respect of these particulars, which are not intended to be statements or representations of fact and any intending purchaser or lessee must satisfy himself by inspection or otherwise as to the correctness of each of the statements contained in these particulars. Any floorplans on this brochure are for illustrative purposes only and are not necessarily to scale.

Offices also at:
Chorlton | Didsbury | Disley | Glossop | Hale | Macclesfield | Manchester | Sale | Wilmslow | Withington

68 The Arches, Whitworth Street West, Manchester, M1

0161 833 9499

manchester@jordanfishwick.co.uk
www.jordanfishwick.co.uk