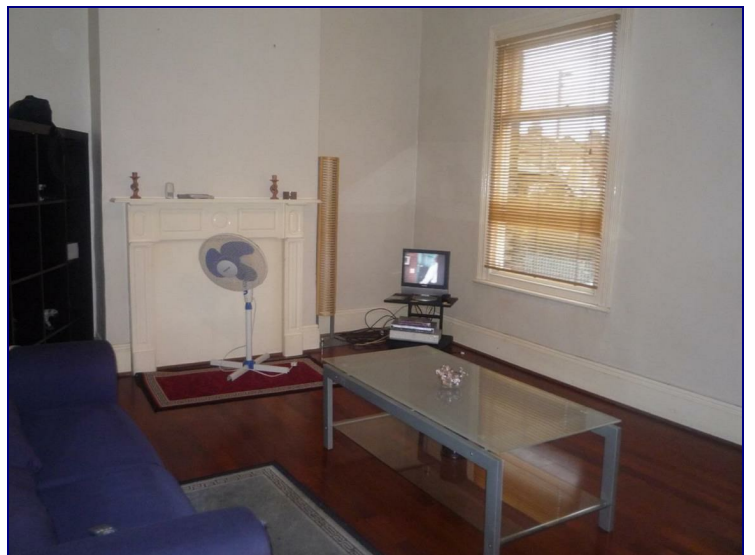



Pembury Road, N17 6SR



£1,050 PCM

Charming One Bedroom Flat Conversion in Bruce Grove to let. Available mid , this property offers a very spacious living room with feature fireplace and gorgeous wood flooring; and a fully fitted kitchen with integral appliances and a stunning breakfast bar. The excellently sized double bedroom has high ceilings and neutral décor complimented by new carpeting. With gas central heating and street parking available, this property would suit a professional couple very well as it is ideally located close to Bruce Grove Overground and various bus stops to many locations throughout the Capital. EPC Rating D



Energy Efficiency Rating		
	Current	Potential
<i>Very energy efficient - lower running costs</i>		
(92 plus) A		
(81-91) B		
(69-80) C		
(55-68) D		
(39-54) E		
(21-38) F		
(1-20) G		
<i>Not energy efficient - higher running costs</i>		
England & Wales	EU Directive 2002/91/EC	

Environmental Impact (CO ₂) Rating		
	Current	Potential
<i>Very environmentally friendly - lower CO₂ emissions</i>		
(92 plus) A		
(81-91) B		
(69-80) C		
(55-68) D		
(39-54) E		
(21-38) F		
(1-20) G		
<i>Not environmentally friendly - higher CO₂ emissions</i>		
England & Wales	EU Directive 2002/91/EC	