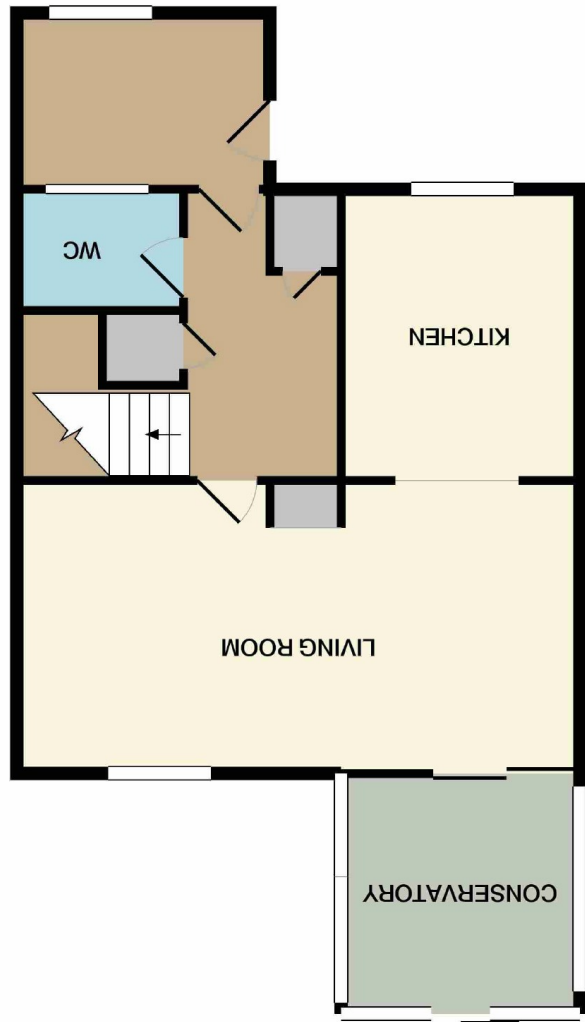


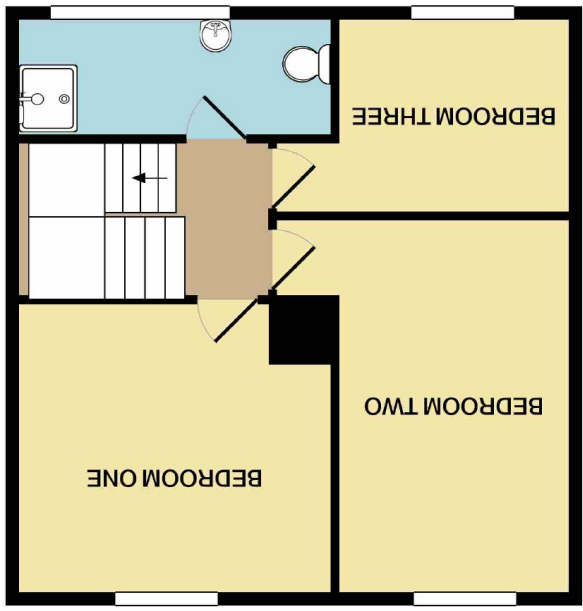
These particulars are believed to be accurate but they are not guaranteed and do not form a contract. Neither Jordan Fishwick nor the vendor or lessor accept any responsibility in respect of these particulars, which are not intended to be statements or representations of fact and any intending purchaser or lessee must satisfy himself by inspection or otherwise as to the correctness of each of the statements contained in these particulars. Any floorplans on this brochure are for illustrative purposes only and are not necessarily to scale.

Measurements are approximate. Not to scale. Illustrative purposes only.
Made with Metropix ©2020

GROUND FLOOR



1ST FLOOR



**14 Lincoln Place, Macclesfield,
Cheshire SK10 3EW**
£142,500



The Property

****NO ONWARD CHAIN**** located within close proximity to excellent, highly rated primary and secondary schools such as Whirley and Fallibroome as well as Macclesfield Leisure Centre and local transport links. This three bedroom end terrace home offers spacious family accommodation along side uPVC double glazed windows and gas central heating. The layout in brief comprises; covered porch/utility room, entrance hallway, living/dining room, fitted kitchen and a conservatory. To the first floor and three good size bedrooms and shower room. The house is set back behind a wall and wrought iron gate with a low maintenance courtyard. The rear garden is of a good size and enclosed, with an artificial lawn and large patio area. There is a courtesy gate to the rear

of the garden.

Locality

Location, Directions, Enclosed Porch/
Utility Room, Entrance Hallway,
Downstairs WC, Living/Dining Room
21'2 x 10'10 (6.45m x 3.30m),
Conservatory 11'8 x 8'10 (3.56m x
2.69m), Kitchen, Turning Staircase To
First Floor Landing, Bedroom One 14'2
x 9'0 (4.32m x 2.74m), Bedroom Two
11'0 x 10'0 (3.35m x 3.05m), Bedroom
Three 9'1 x 7'7 (2.77m x 2.31m),
Bathroom, Outside, Front And Rear
Gardens, Tenure

Postcode - SK10 3EW

EPC Rating -

Floor Area - sq ft

Local Authority -

Council Tax - Band

