



Jordanfishwick

DIDSBURY
Victoria Court



Victoria Court, Didsbury
M20 1FR
Guide price £262,500



The Property

****SEE VIDEO TOUR**** - A stylish TWO DOUBLE BEDROOM first floor apartment forming part of a POPULAR purpose built development in Didsbury, enjoying an IDEAL LOCATION which is within a SHORT STROLL of the Village. 774 sq ft. Numerous noteworthy features include a generous entrance hall with cloaks space, living room extending over 21 ft, fitted breakfast kitchen with a range of units, two good sized bedrooms and the bathroom with white suite and chrome fittings. In addition, the property enjoys uPVC double glazed windows, electric wall mounted heaters, useful communal landing area providing additional storage area and an allocated parking space.

Directions

From our Didsbury office proceed along Wilmslow Road in a northerly direction. At the first set of traffic lights turn left onto Barlow Moor Road. Victoria Avenue is the fifth turning on the left, with the development being on the corner of Barlow Moor Road.



- Stylish apartment
- Two double bedrooms
- Living room over 21ft
- Fitted breakfast kitchen
- Tiled bathroom with white suite
- Generous hallway
- uPVC double glazing
- Electric heaters
- Allocated parking
- Close to Didsbury Village

Postcode - M20 1FR

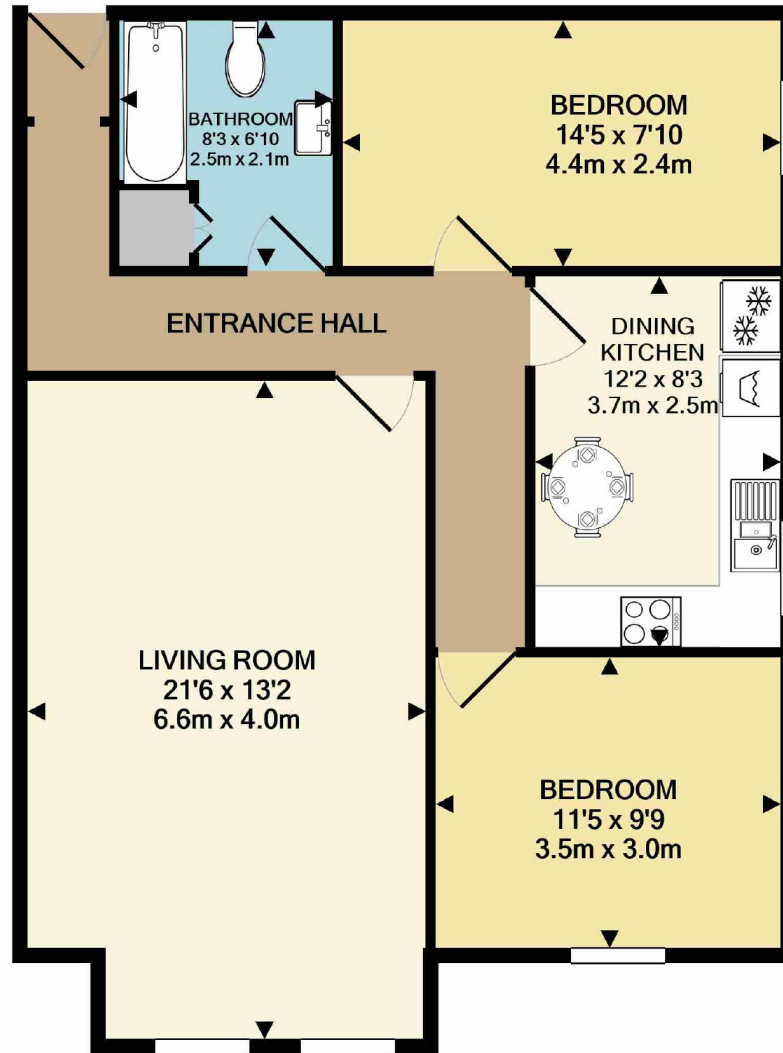
EPC Rating - D

Floor Area - 774 sq ft

Local Authority - Manchester City Council

Council Tax - Band C





TOTAL APPROX. FLOOR AREA 774 SQ.FT. (71.9 SQ.M.)
 Measurements are approximate. Not to scale. Illustrative purposes only
 Made with Metropix ©2020



These particulars are believed to be accurate but they are not guaranteed and do not form a contract. Neither Jordan Fishwick nor the vendor or lessor accept any responsibility in respect of these particulars, which are not intended to be statements or representations of fact and any intending purchaser or lessee must satisfy himself by inspection or otherwise as to the correctness of each of the statements contained in these particulars. Any floorplans on this brochure are for illustrative purposes only and are not necessarily to scale.

Offices also at: Wilmslow, Macclesfield, Hale, Sale, Chorlton, Glossop, Manchester & Salford

757-759 Wilmslow Road, Didsbury Village, Manchester, M20

0161 445 4480

didsbury@jordanfishwick.co.uk
 www.jordanfishwick.co.uk