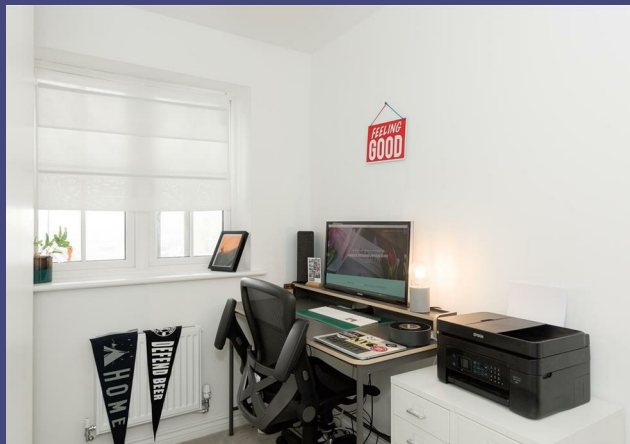


# Harp Road Horley Surrey

£425,000



RALPH JAMES

# FLOOR PLANS



Harp Road, Horley

Total Area: 86.8 m<sup>2</sup> ... 934 ft<sup>2</sup> (excluding garage)

FOR ILLUSTRATIVE PURPOSES ONLY.

Whilst every attempt has been made to ensure the accuracy of the floor plan shown, all measurements, positioning, fixtures, features, fittings and any other data shown are an approximate interpretation for illustrative purposes only and are not to scale.

No responsibility is taken for any error, omission, miss-statement or use of data shown.

The above statement applies to both 'Still Moving London LTD' and the Company or individual displaying this floor plan.

Unauthorised reproduction prohibited.

© Still Moving London LTD (www.stillmoving.london)

RALPH JAMES



## IN A NUTSHELL

 enter text here

 3 bedrooms

 1 reception rooms

 2 bathrooms

 enter text here

 enter text here



# WHAT'S GREAT?

Spacious and sophisticated from top to bottom, this modern three bedroom detached home is located in the new, popular Westvale Park development. Driving down the winding entrance to the development, with fields either side, it's hard to believe you're still in Horley!

Beautifully finished throughout, you will be impressed and the space on offer. Feeling like home as soon as you step through the door, you head into the large hallway with storage and a downstairs water closet. To the right you have the chic open plan kitchen, white gloss cupboards sweep around the kitchen with integrated appliances and endless amounts of storage for you to be able to keep the countertops bare for creating a mess with new recipes. The social layout is great for entertaining friends for an evening of wine and dining.

The large living room is a great space, comfortably fitting in a couple of luxury sofas and an entertainment unit, you can imagine sitting here with your feet up after a long day with a cup of something hot and a good book as you admire the view of the garden. In the summer you can open up the double doors out to the decking where you can set up the BBQ and make the most of the lighter summer evenings. The pretty lawn is easy to maintain with planters running down the length of the fence where you can add an array of flowers to bring a pop of colour.

Upstairs there are three bedrooms with the master bedroom has a gorgeous en-suite with walk in shower. The family bathroom, like the rest of this home is elegant and has a grey tiled finish surrounding the bath with overhead shower, you can sit and soak with a glass of wine or hop in the shower on those rushed mornings.

Outside the garage has a parking space in front of it, if not needed for additional parking this could be converted into a home office to keep work away from the main house or additional storage.

This home also comes with Nest Home Camera system installed with camera for driveway and video doorbell!



Thomas likes it because....

"This is the perfect house for a growing family, the large rooms and social layout is great for entertaining friends or enjoy a quiet night in. It's neutral tones mean you can move straight in with little fuss and it's modern finish makes this already generously size home feel even more spacious."

## SELLER'S SECRET

"We have a few - The house is situated on a nice small, quiet road in Westvale Park. The development location has been perfect for us, close to both Reigate and Horley with close proximity to multiple stations which has made for an easy commute. Our favourite room in the house has to be the kitchen, the light on a sunny day is what sold us this house, it's a lovely place to eat, work and socialise."

## CLOSE TO HOME

enter text here

To buy or not to buy...

---

---

---

---

---

---

RALPH JAMES



39 High Street | Redhill | RH1 1RX | 01737 765555  
admin@ralphjames.co.uk | www.ralphjames.co.uk

