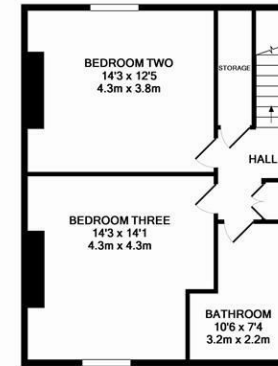




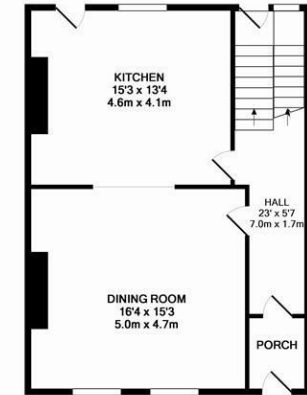
****AVAILABLE SEPTEMBER 2021** **
 £110PPPW** **FURNISHED** A
 gorgeous period terraced house in the heart
 of Newcastle City Centre. Found on highly
 sought after St Thomas Crescent, this four-
 story town house boasts four bedrooms, two
 bathrooms, open plan kitchen dining room,
 full width lounge and a private rear yard!**

The accommodation briefly comprises an
 entrance hall on the ground floor, large
 dining room open plan to a modern fitted
 kitchen. Down to the lower ground floor you
 will find two double bedrooms and a plush
 refitted bathroom. The first floor comprises
 a stunning full width lounge with feature
 fireplace as well as a large master bedroom.
 The top floor has a further two double
 bedrooms and a second bathroom WC.
 Externally there is a private rear walled
 garden, accessed either via the kitchen or
 rear stairway. To the front there is on street
 permit parking.

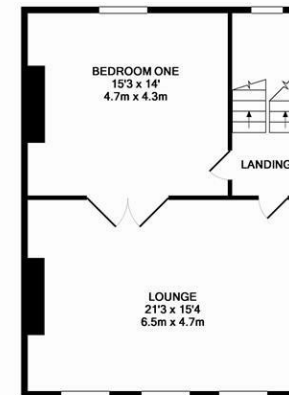
Available 7th September 2021 | £110pppw/
 £1,906.66pcm | Furnished | Terraced
 House | 2,161 Sq. ft (200.7 m²) | Full
 Width Lounge | Open Plan Kitchen Dining
 Room | Four Double Bedrooms | Two
 Bathrooms | Private Rear Garden | GCH &
 DG | Permit Parking | Highly Sought After
 Location | EPC Rating: D



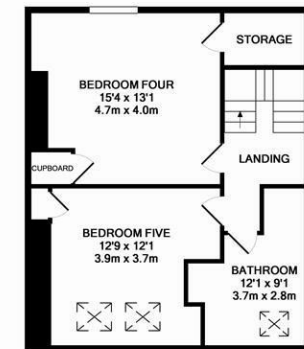
LOWER GROUND FLOOR
 APPROX. FLOOR
 AREA 505 SQ.FT.
 (46.9 SQ.M.)



GROUND FLOOR
 APPROX. FLOOR
 AREA 578 SQ.FT.
 (53.7 SQ.M.)



1ST FLOOR
 APPROX. FLOOR
 AREA 578 SQ.FT.
 (53.7 SQ.M.)



2ND FLOOR
 APPROX. FLOOR
 AREA 500 SQ.FT.
 (46.4 SQ.M.)

TOTAL APPROX. FLOOR AREA 2161 SQ.FT. (200.7 SQ.M.)

Whilst every attempt has been made to ensure the accuracy of the floor plan contained here, measurements of doors, windows, rooms and any other items are approximate and no responsibility is taken for any error, omission, or mis-statement. This plan is for illustrative purposes only and should be used as such by any prospective purchaser. The services, systems and appliances shown have not been tested and no guarantee as to their operability or efficiency can be given.
 Made with Metropix ©2016

£1,906 PCM

Misrepresentation Act 1967. These particulars and the descriptions and measurements herein do not constitute representation and whilst every effort has been made to ensure accuracy, this cannot be guaranteed.

