

Floor Plan



Ground Floor

EPC

Energy Efficiency Rating		
	Current	Potential
Very energy efficient - lower running costs		
(92 plus) A		
(81-91) B		
(69-80) C		
(55-68) D		
(39-54) E		
(21-38) F		
(1-20) G		
Not energy efficient - higher running costs		
England & Wales		EU Directive 2002/91/EC

**DISCLAIMER**  
Services All main services are understood to be available. Prospective purchasers are however recommended to verify connection with the appropriate suppliers. Fixtures and Fittings Excluded unless referred to in the sale particulars. Photographs are for illustrative layout purposes only and items shown are not included unless specifically mentioned in contract documentation. Please note: wide angle lens photography may be used, in certain instances, sometimes resulting in slight distortion.

**Viewing**  
Strictly by arrangement through Shortland Horne. Measurements Room measurements and floor plans are for guidance purposes only and are approximate.

**Purchase Procedure**  
It is essential to contact our offices before applying for a mortgage or arranging for a survey on this or any other Shortland Horne property to confirm current availability.

**Money Laundering**  
We have in place procedures and controls, which are designed to forestall and prevent Money Laundering. If we suspect that a supplier, customer/client, or employee is committing a Money Laundering offence as defined by the Proceeds of Crime Act 2002, we will in accordance with our legal responsibilities disclose the suspicion to the National Criminal Intelligence Service. Intending purchasers will be asked to produce identification documentation at a later stage and we would ask for your co-operation in order that there will be no delay in agreeing the sale.

**Appliances**  
We would ask that you note that the property may contain appliances that would warrant checking for satisfactory working condition and you may wish to arrange this at your own expense prior to legal commitment.

**Referrals**  
If Shortland Horne have introduced you to a Solicitor, Mortgage Advisor or Surveyor with whom we have a business relationship we are required by the Code of Conduct published by the NAEA propertymark to notify you that we will receive a referral fee. The fee for these services will vary depending on the transaction and intermediary may make to attract business.

Shortland Horne's Mortgage Advisor is Midland Financial Planning Limited, a partner practices of St. James's Place. For referring business to Midland Financial Planning Limited Shortland Horne will receive up to 50% of any commissions earned. You do not have to use the service of any of our providers and can choose to source the service from someone else. Any advice that is provided will be independent.



follow us  

**Shortland Horne Coventry City Centre**  
Warwick Gate, 21-22 Warwick Row, Coventry CV1 1ET

**Other branches:**  
306 Walsgrave Road, Walsgrave, Coventry CV2 4BL  
10 Euston Place, Leamington Spa CV32 4LJ

**call:** 02476 222123  
**email:** sales@shortland-horne.co.uk  
**visit:** shortland-horne.co.uk

follow us  

**Coopers Meadow**  
**Keresley End CV7 8RL**





# £130,000 Offers over | Bedrooms 2 Bathrooms 2

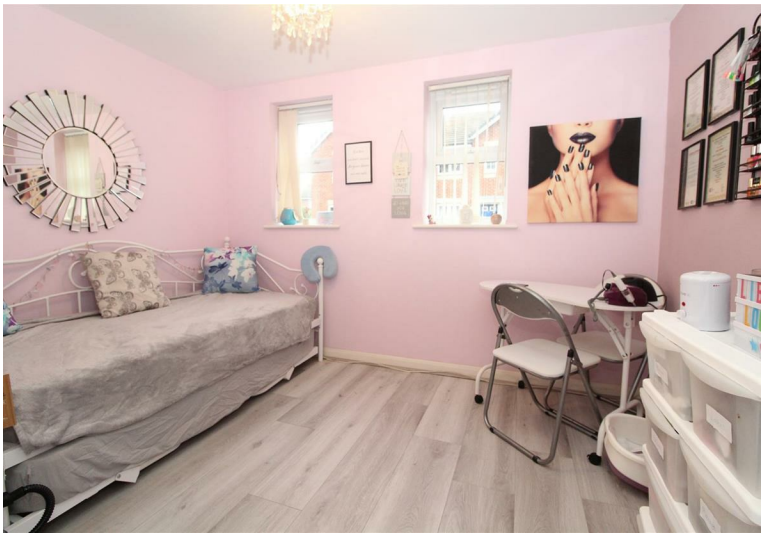
ATTENTION FIRST TIME BUYERS AND INVESTORS, A SPACIOUS APARTMENT WITHIN CLOSE DISTANCE TO LINKS TO BIRMINGHAM AND COVENTRY, OFFERED WITH NO UPWARD CHAIN.

This well presented two bedroom ground floor apartment comprises of modern fitted kitchen with an open plan lounge/diner with French doors leading you to a front lawned area.

There are two generously sized bedrooms with the master bedroom featuring en-suite facilities and a family bathroom. This property also comes with an allocated parking space for one vehicle, a secure entry entry system, double glazing and electric heating.

## Further Information:

Lease: 144 Years remaining  
Ground Rent: £250 per annum  
Maintenance Charge: £1354.02 Per Annum



GROUND FLOOR	
Entrance Hallway	
Lounge	12'6 x 11'3
Kitchen	9'4" x 5'4"
Bedroom One	18'2" x 11'0"
En-suite	
Bedroom Two	10'7" x 8'1"
Bathroom	