

ASHLEY COURT



£129,500



Flat 9, Ashley Court, 136 Knightsdale Road, Weymouth, DT4 0HX

COMMUNAL ENTRANCE

INNER HALLWAY Doors to all rooms, fusebox, cupboard housing electric meter, electric wall heater, entry phone.

BEDROOM ONE 15' 8" x 9' 10" (4.8m x 3m) Side aspect double glazed window, wall mounted electric heater.

BEDROOM TWO 9' 8" x 9' 8" (2.95m x 2.95m) Side aspect double glazed window, wall mounted electric heater.

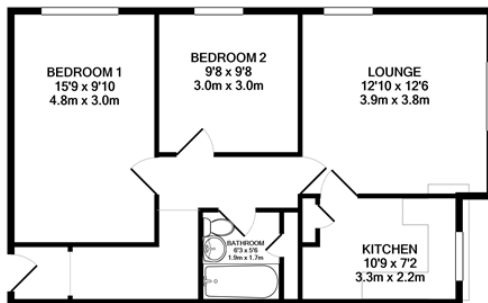
BATHROOM 6' 10" x 6' 2" (2.1m x 1.9m) Low level wc, pedestal hand wash basin, inset bath, part tiled, electric shower, fan, wall mounted heater, cupboard housing shelving and storage

KITCHEN 9' 10" x 7' 2" (3m x 2.2m) Front aspect double glazed window, range of wall and base units with worktops over, stainless steel sink and drainer, part tiled, cupboard housing storage space, fan

LOUNGE 12' 9" x 12' 5" (3.9m x 3.8m) Front aspect double glazed window, side aspect double glazed window, wall mounted electric heater, aerial point, telephone point.

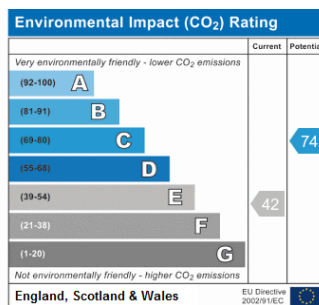
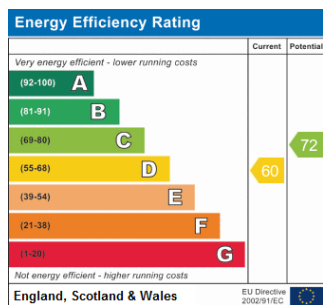
COMMUNAL GARDENS

ALLOCATED PARKING SPACE



TOTAL APPROX. FLOOR AREA 621 SQ.FT. (57.7 SQ.M.)

Whilst every attempt has been made to ensure the accuracy of the floor plan contained here, measurements of doors, windows, rooms and any other items are approximate and no responsibility is taken for any error, omission, or mis-statement. This plan is for illustrative purposes only and should be used as such by any prospective purchaser. The services, systems and appliances shown have not been tested and no guarantee as to their operability or efficiency can be given.
Made with Metropix ©2020



Address:
Ashley Court

N.B. All measurements quoted are approximate & for guidance only. No appliances, systems or fittings have been tested and no guarantee as to their condition or suitability is given or implied. Photographs are reproduced for general information. It cannot be inferred that any item is included. Misdescriptions Act 1991.