

Chapel Court

George Street, Glastonbury, BA6 9JH

COOPER
AND
TANNER

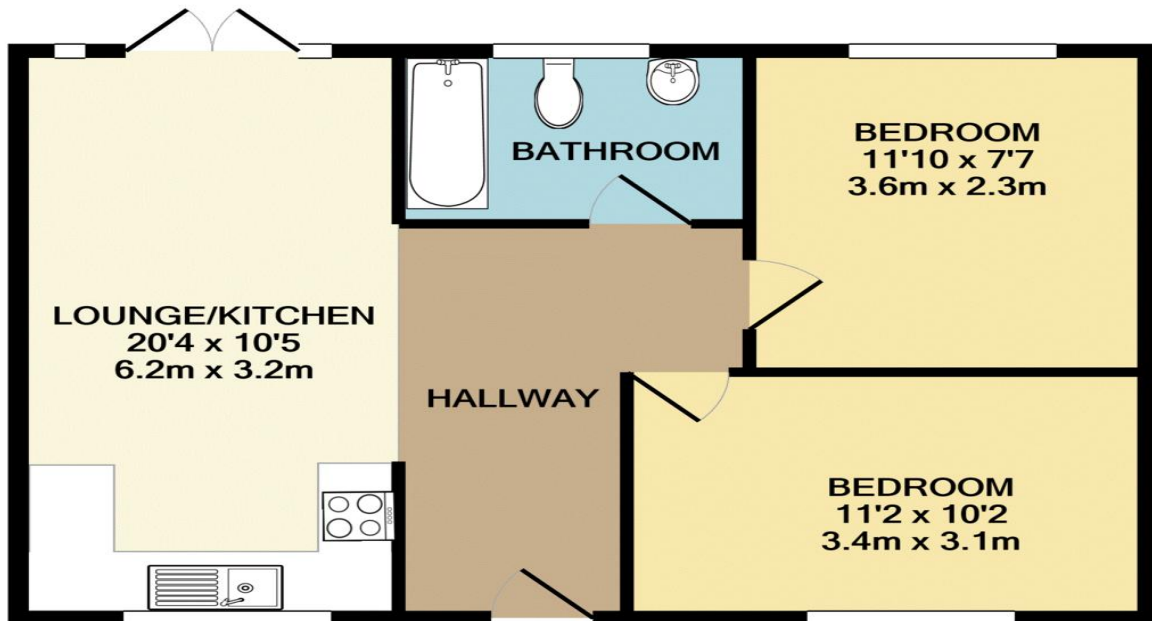


£137,500 Leasehold

🛏️ 2 🛋️ 1 🚿 1 EPC C

Description

DESCRIPTION A well positioned and tucked away Glastonbury town centre ground floor apartment, with two well appointed double bedrooms and patio area to the rear. The property is offered to market as an ongoing investment with tenant in situ. There is an open plan living accommodation to include a well equipped kitchen and sitting room. Double glazed patio doors lead out from the sitting room into the walled courtyard area, which offers a good deal of privacy and space for garden table and chairs. Rental income of £595 pcm.



Whilst every attempt has been made to ensure the accuracy of the floor plan contained here, measurements of doors, windows, rooms and any other items are approximate and no responsibility is taken for any error, omission, or mis-statement. This plan is for illustrative purposes only and should be used as such by any prospective purchaser. The services, systems and appliances shown have not been tested and no guarantee as to their operability or efficiency can be given
 Made with Metropix ©2020



Features

- Investment opportunity
- Central town centre position
- Ground floor apartment
- Walled patio area
- Open plan living area
- Two double bedrooms
- Privacy to rear patio
- Tucked away location
- Rental income £595 pcm
- Leasehold

Local Information

- Council Tax Band B
- Tenure Leasehold (988 yrs)
- EPC Rating C

GLASTONBURY OFFICE

Telephone 01458 831077

41 High Street, Glastonbury, Somerset, BA6 9DS

glastonbury@cooperandtanner.co.uk

**COOPER
AND
TANNER**

Important Notice: These particulars are set out as a general outline only for the guidance of intended purchasers and do not constitute, nor constitute part of, an offer or contract. All descriptions, dimensions, reference to condition and necessary permissions for use and occupation, warranties and other details are given without responsibility and any intending purchasers should not rely on them as statements or representations of fact but must satisfy themselves by inspection or otherwise as to the correctness of each of them.

