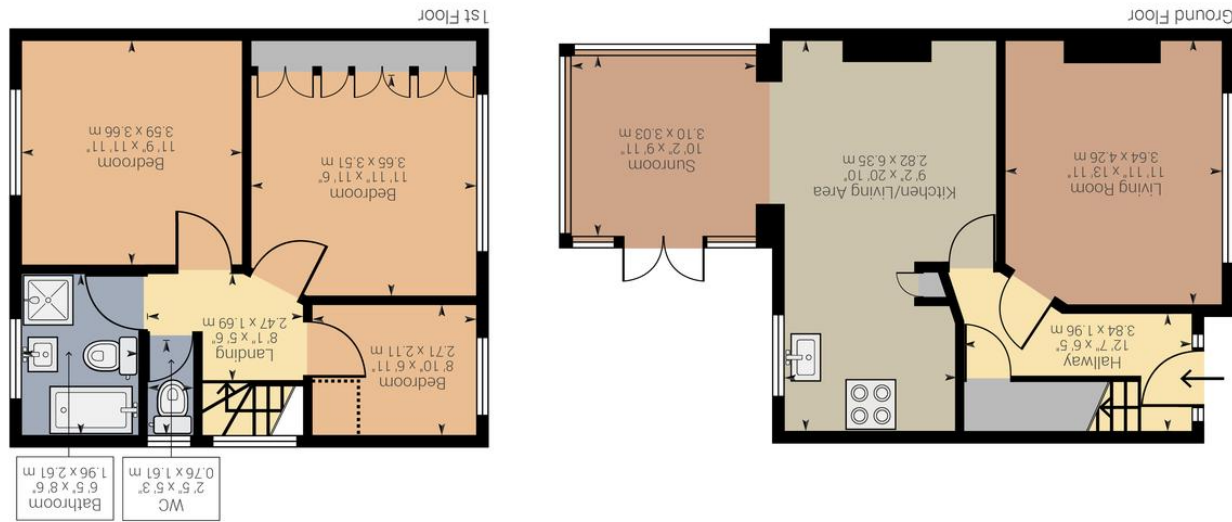


Approximate net internal area: 1034.01 sq ft / 96.06 m²
While every attempt has been made to ensure accuracy, all measurements are approximate.
This floor plan is for illustrative purpose only and should be used as such by any prospective tenant or purchaser.

Powered by Giraffe360



FIELD END ROAD, HA4 9PA
OFFERS IN EXCESS OF £600,000





A beautifully presented three bedroom garage own drive semi detached family home located in the heart of Eastcote with easy access to its range of transport links and amenities. Features include garage, off street parking, conservatory, large rear garden, modern interiors and potential to extend stpp. The property is 0.2 miles away from Eastcote high street and train station (Metropolitan & Piccadilly Line) and 0.2 miles away from the sought after Newnham Primary School.

