

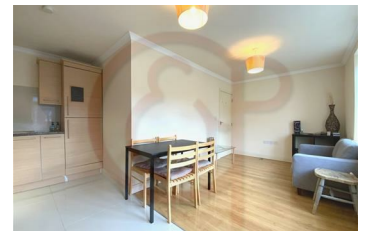


## King Street, Hammersmith, W6

**£1,350 Per Month**

A modern one bedroom flat located moments from Hammersmith Station. The property is well presented throughout and comprises a lovely reception room, fully equipped open plan kitchen, spacious bedroom and a fully tiled bathroom. Further benefits include double glazing, wooden flooring, quality furnishings and there are plenty of great restaurants, cafes, pubs, shops and entertainment all around! Transport links include Hammersmith (Circle, District, Piccadilly and Hammersmith & City).

- Modern one bedroom apartment
- Double glazed windows
- Wood floors
- Second floor flat
- Moments from Hammersmith Station



Energy Efficiency Rating		Environmental Impact (CO <sub>2</sub> ) Rating	
Current	Potential	Current	Potential
<b>A</b>	<b>B</b>	<b>78</b>	<b>78</b>
100 kWh/m <sup>2</sup> per year (kWh/m <sup>2</sup> )	55 kWh/m <sup>2</sup> per year (kWh/m <sup>2</sup> )	100 g/m <sup>2</sup> per year (g/m <sup>2</sup> )	57 g/m <sup>2</sup> per year (g/m <sup>2</sup> )
46	78	46	78
Not energy efficient - Higher heating costs	Efficient - Lower heating costs	Not environmentally friendly - Higher CO <sub>2</sub> emissions	Environmentally friendly - Lower CO <sub>2</sub> emissions
England & Wales	England & Wales	England & Wales	England & Wales
2008/1/EC	2008/1/EC	2006/1/EC	2006/1/EC