



Brent House, 50 Wandsworth Road
Nine Elms SW8

GARTONJONES.COM



Brent House, 50 Wandsworth Road Nine Elms, SW8

GARTON JONES.COM

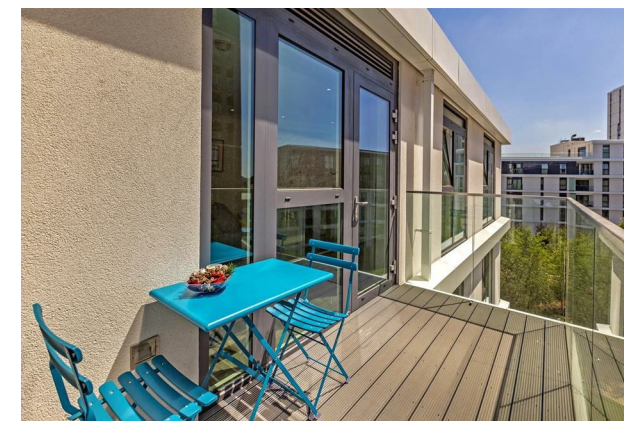
9 Albert
Embankment
London
SE1 7SP

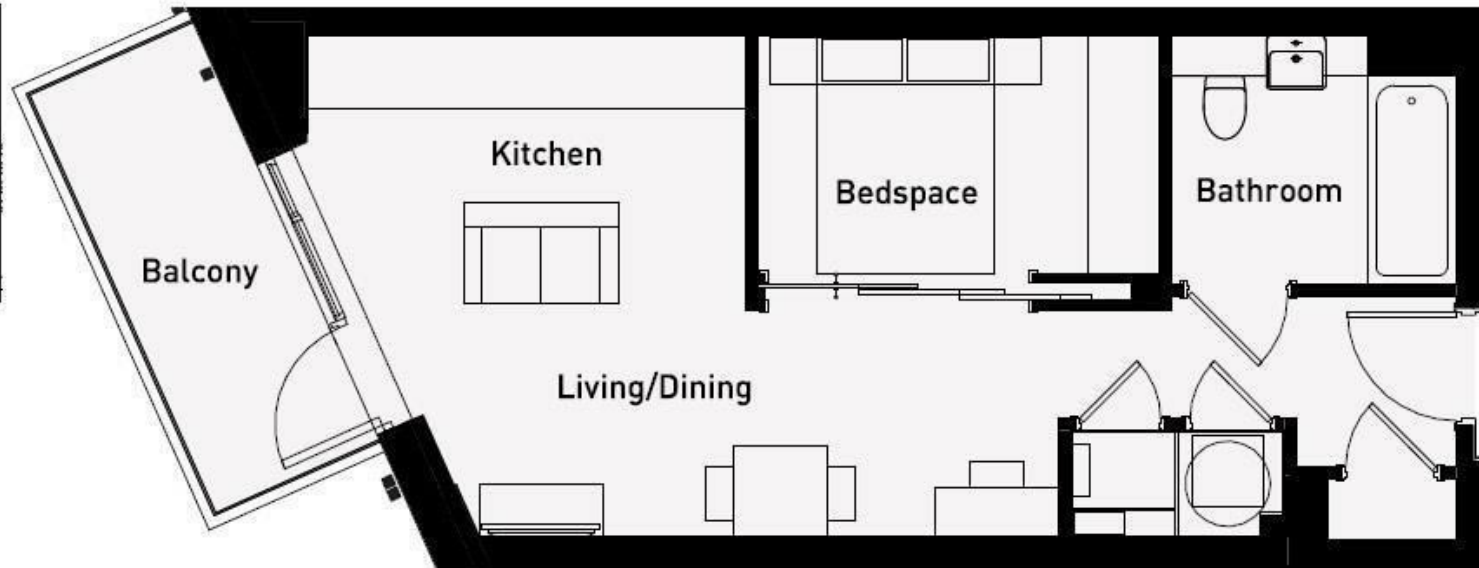
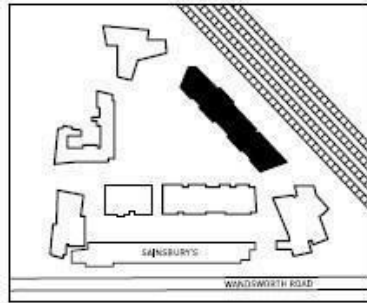
Lettings:
+44 (0) 20 7735 1888
nineelms@gartonjones.com
www.gartonjones.com

£395 Per Week

A new studio suite to rent, of approx. 425sq.ft (39sq.m) on the 8th floor (with lift) of Brent House, part of the long-awaited Nine Elms Point development by Barratt London, located close to the River Thames and the new US Embassy. This property further benefits from great views, open plan reception room and kitchen with AEG integrated appliances, there is a large private balcony, luxury bathroom, wood flooring and good storage. Nine Elms Point has a 24-hour concierge, residents gym, a cinema screening room and business lounge and you are located a being a few minutes' walks from the excellent transport services of Vauxhall including rail, tube and bus links as well as a river taxi pier at St George Wharf. The development benefits from an onsite Sainsbury's Superstore to compliment a good selection of other local shops and restaurants. Offered furnished.

- 425sq.ft (39sq.m)
- Studio
- Bathroom
- Large Private Balcony
- Reception Room
- Smart Kitchen with AEG Integrated Appliances
- Great Views
- 24 Hour Concierge
- Residents Gym, Cinema Screening Room & Business Lounge
- On-Site Sainsbury's





Living/Dining	5685 x 2920mm	18'7" x 9'6"
Kitchen	3700 x 1300mm	12'1" x 4'3"
Bedspace	3395 x 2000mm	11'1" x 6'6"
Bathroom	2400 x 2100mm	7'10" x 6'10"
TOTAL	39.40 sq m	425 sq ft
Balcony	1500 x 3830mm	4'11" x 12'6"

