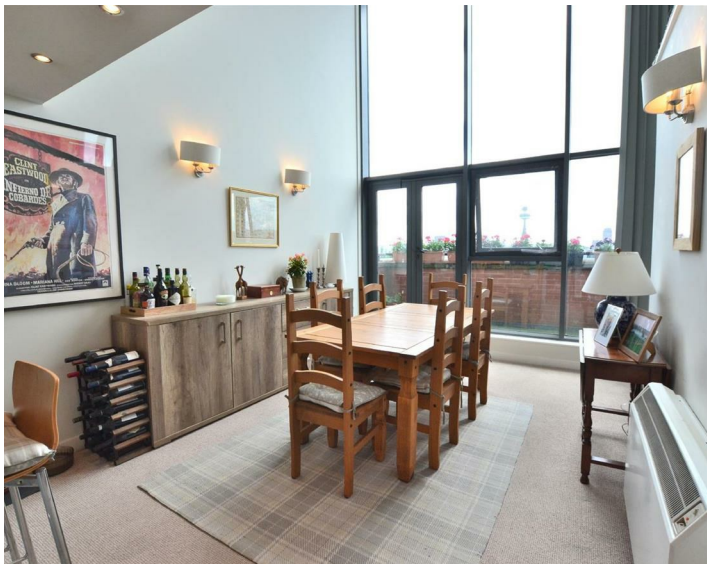




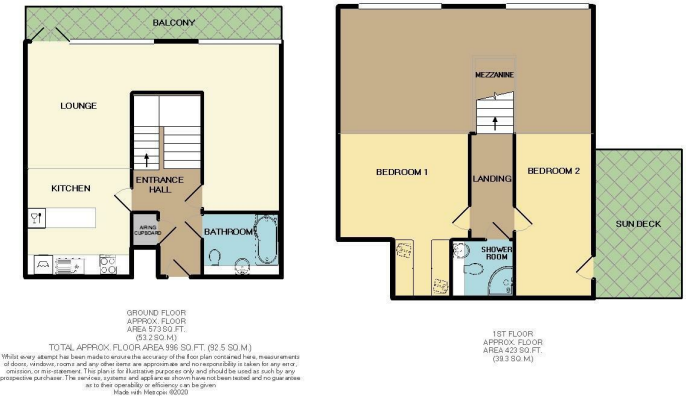
128 , Liverpool, L3 6EN
Asking Price £215,000 Leasehold

www.
cityresidential
.co.uk



About the Property

Boasting fantastic features this stunning duplex, penthouse apartment is proudly offered for sale! Situated within the popular and convenient development of 44 Pall Mall, the property benefits from TWO fantastic balconies with views over Liverpool City Centre. The accommodation which is located on the sixth and seventh floors is bright and immaculately presented, briefly comprises; entrance hallway, open plan kitchen and dining room which provides access onto the timber decked balcony, separate living area and family bathroom to the sixth floor. To the seventh floor you will find the master bedroom with walk in wardrobe area, shower room and second double bedroom which gives access onto a fantastic terrace with stunning views over Liverpool City Centre. The property further benefits from a secure under croft allocated car parking space. An internal inspection is highly recommended to appreciate the accommodation on offer.



Energy Efficiency Rating		Current	Potential
Very energy efficient - lower running costs			
(92 plus) A			
(81-91) B			
(69-80) C			
(55-68) D		66	70
(39-54) E			
(21-38) F			
(1-20) G			
Not energy efficient - higher running costs			
England & Wales	EU Directive 2002/91/EC		



City Residential
 81/87 Victoria Street, The Old Haymarket, Liverpool L1 6DG
 T: 0151 231 6100 F: 0151 231 6105
 E: sales@cityresidential.co.uk



WWW. **cityresidential** .CO.UK