

OPENING DOORS SINCE 1843

Loveitts est. 1843
THE ESTATE AGENTS



21 Hockley Lane
Coventry, CV5 7FT

Offers Over £180,000

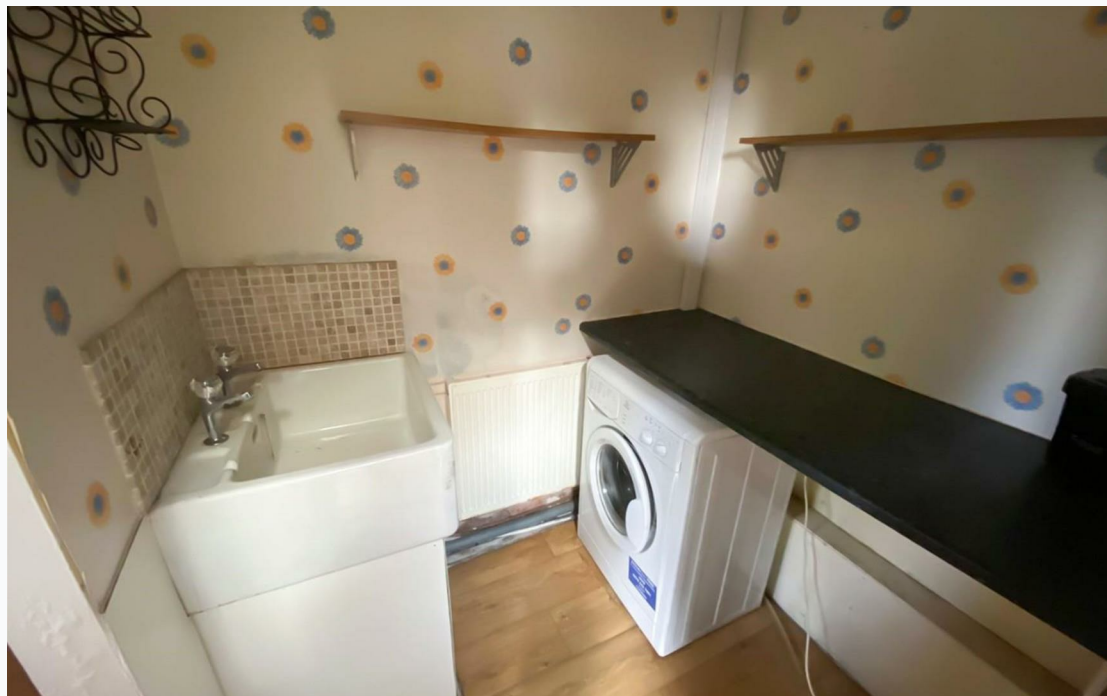


21 Hockley Lane

Coventry, CV5 7FT

Loveitts are delighted to bring to the market a two bedroom end terrace house with no onward chain. The property has ample parking and in short comprises of a lounge with an open fire place, kitchen / diner, second reception room to the rear, utility / W/C and access to the rear garden. To the first floor the property has two double bedrooms, family bathroom and loft space. The property must be viewed to appreciate the size and potential. A great advantage to this property is that there is a garage / workshop to the rear with electric.

Call us today for an internal viewing or more information.





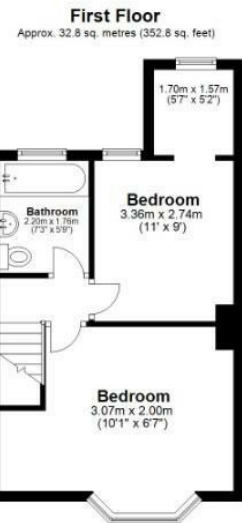
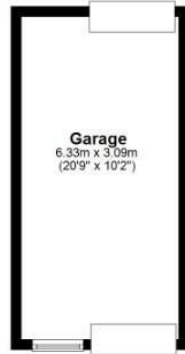
- Two Double Bedrooms
- Off Road Parking For Multiple Cars
- Gas Central Heating
- End Terrace House
- No Onward Chain
- Large Garage / Work Shop To Rear
- EPC Rating D



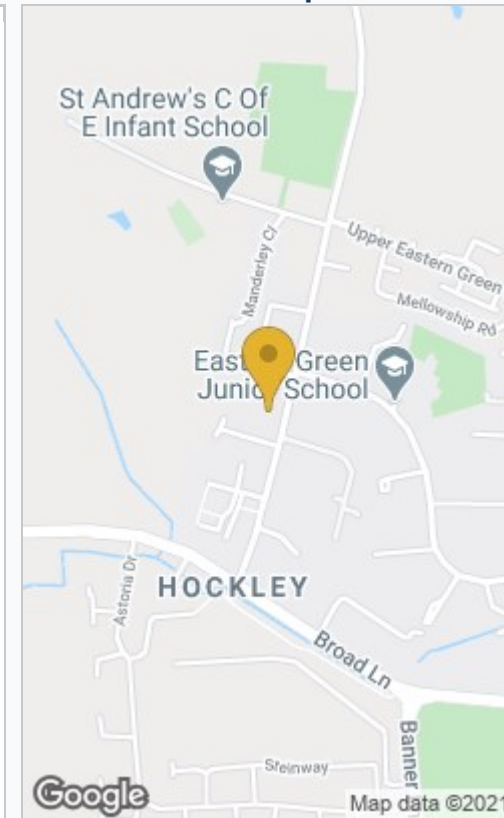
Floor Plan

Area Map

Ground Floor
Approx. 61.5 sq. metres (661.5 sq. feet)



Total area: approx. 94.2 sq. metres (1014.3 sq. feet)



Energy Efficiency Rating

	Current	Potential
Very energy efficient - lower running costs		
(92 plus) A		
(81-91) B		
(69-80) C		
(55-68) D		
(39-54) E		
(21-38) F		
(1-20) G		
Not energy efficient - higher running costs		
	60	79
England & Wales	EU Directive 2002/91/EC	

These particulars, whilst believed to be accurate are set out as a general outline only for guidance and do not constitute any part of an offer or contract. Intending purchasers should not rely on them as statements of representation of fact, but must satisfy themselves by inspection or otherwise as to their accuracy. No person in this firm or employment has the authority to make or give any representation or warranty in respect of the property.



Coventry
29 Warwick Row, Coventry CV1 1DY
024 7625 8421

Registered in England & Wales Company no. 7558151