



PERIOD
HOMES



Mill Green Road
Mill Green Essex CM4 0PT
Offers In Excess Of £1,950,000

Mill Green Road, Mill Green, Essex CM4 0PT

17TH CENTURY - Built in parts in the 17th century, yet modernised to effectively 'brand new' standards in recent years, this "chocolate box" period cottage (not listed) is situated on a plot circa 0.5 of an acre, in the most sought after village of Fryerning.

Although substantially extended and renovated in recent years, Badgers Lea has retained a great deal of the original character, which includes exposed joinery, brickwork and original fireplaces. The very private grounds are a special feature, beautifully maintained with mature and lush planting, as well as a full lawn irrigation system.

Approached via a long, private driveway, the property is set in the centre of its plot with a garage situated to the side. Internal accommodation commences with an entrance hall giving access to a total of three reception rooms – a lounge, study and playroom/snug, as well as the most magnificent kitchen, fitted with bespoke cabinetry and a fitted dining 'banquette', as well as an adjoining, open-plan dining room with attractive red brick, original fireplace. Bi-fold doors give access to the rear terrace, whilst a central lantern roof bathes the entire room in natural light.

The accommodation offers five bedrooms in total, two offering luxury en-suites, as well as a family bathroom. There is a choice of master suites, one being situated on the ground floor, the other to the rear of the first floor. The ground floor suite is exceptional, with a high ceiling and bespoke lighting, a walk-in dressing room, and large, luxury en-suite with steam shower enclosure. Bedrooms three, four and five occupy the original section of the house, enjoying superb exposed timbers and vaulted ceilings in parts.

Badgers Lea occupies an idyllic location close to woodland and open countryside, yet within a short driving distance to excellent road and rail links. The village of Fryerning is just over 2 miles from the centre of Ingatestone village, with its excellent selection of shops serving everyday needs. Formerly a market town, the area is primarily greenbelt and situated 20 miles north east of London. London and the three London airports, including Stansted airport, are all within a relatively short drive.





ENTRANCE HALL

STUDY

12'6 x 11'4 (3.81m x 3.45m)

PLAYROOM

14'0 x 11'5 (4.27m x 3.48m)

DINING ROOM

13'7 x 11'5 (4.14m x 3.48m)

KITCHEN/BREAKFAST ROOM

25'5 x 25'1 (7.75m x 7.65m)

CLOAKROOM/WC

LOUNGE

18'10 x 16'6 (5.74m x 5.03m)

UTILITY ROOM

BEDROOM ONE

20'1 x 14'0 (6.12m x 4.27m)

EN-SUITE BATHROOM

DRESSING ROOM

FIRST FLOOR LANDING

BEDROOM TWO

21'11 x 13'5 (6.68m x 4.09m)

EN-SUITE SHOWER ROOM

BEDROOM THREE

14'1 x 11'8 (4.29m x 3.56m)

BEDROOM FOUR

14'0 x 11'5 (4.27m x 3.48m)

BEDROOM FIVE

10'2 x 7'5 (3.10m x 2.26m)

SHOWER ROOM

REAR GARDEN





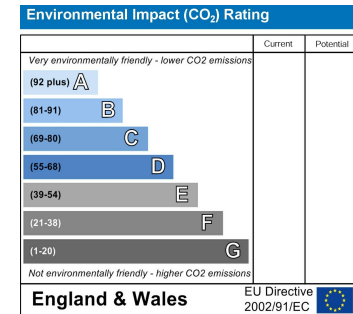
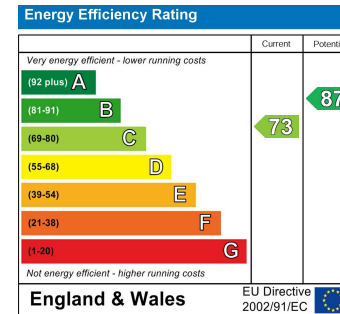
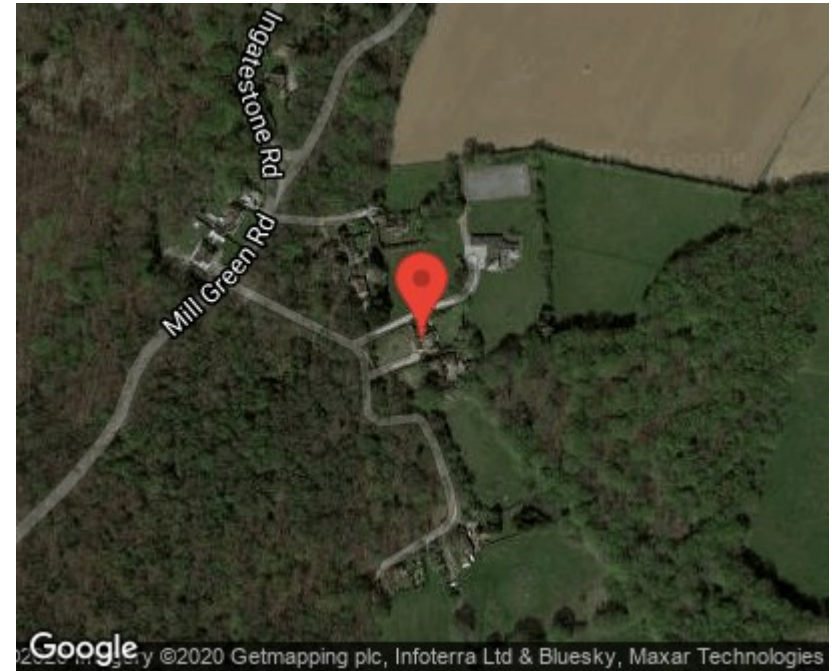
Badgers Lea, Mill Green Road, Mill Green, Ingatestone, Essex
Approximate Gross Internal Area
Main House = 288 Sq M/3100 Sq Ft
Garage = 24 Sq M/263 Sq Ft



Ground Floor

First Floor

Please note that the location of doors, windows and other items are approximate and this floorplan is to be used for illustrative purposes only. Unauthorized reproduction is prohibited.



PLEASE CALL 01277 288000 TO ARRANGE A VIEWING
www.periodhomes.co.uk

INDEPENDENT ESTATE AGENTS - VALUATIONS WITH NO OBLIGATION - PROFESSIONAL SERVICE

These particulars do not constitute any part of an offer or contract. All measurements are given as a guide, no liability can be accepted for any errors arising therefrom. No responsibility is taken for any other error, omission, or mis-statement in these particulars. Period Homes, a trading style of Walkers Village and Country Homes Limited do not make or give, whether in these particulars, during negotiations or otherwise, any representation whatsoever in relation to this property.

