



Palace Road, Brixton, SW2

£485,000

2 bedroom flat - purpose built for sale

Property Details

A well-positioned two double bedroom apartment within this luxury modern development on the popular Palace Road. This sought-after site is ideally located a five-minute walk from Tulse Hill station where transport links will appeal to a wide range of potential purchasers, from first-time buyers to buy-to-let investors or anyone looking for a fantastically located pied-à-terre. This secure, purpose built development has well-maintained grounds and this particular apartment is ideally located on the quieter side of the building, overlooking a charming residential street. The bedrooms are both generous doubles with plenty of space and built-in storage, the larger of the two comes with a sleek en-suite and the second bedroom makes up for its slightly smaller size by offering a stunning balcony. The entire apartment boasts large glass windows and doors that flood the south-facing apartment with sunlight. The spacious reception room is open plan with a large living area, ample space to dine, relax and entertain, plus a well-designed, fully integrated kitchen with everything you might need in terms of mod cons. The balcony is a sun-trap and a gorgeous spot to enjoy a morning coffee or watch the sun go down at the end of the day. The apartment is complimented by a stunning three-piece bathroom, adding to the luxury feel of this high-end new build.

Features

- Two double bedrooms
- Two bathrooms
- Luxury modern-build, gated development
- Two south facing balconies
- Completed in 2017, benefits from the remainder of the ten year warranty
- High-spec throughout
- Local amenities in minutes
- Fantastic transport links
- Brockwell Park in easy reach
- Chain-free

Council tax band D EPC rating B (82)



Palace Road

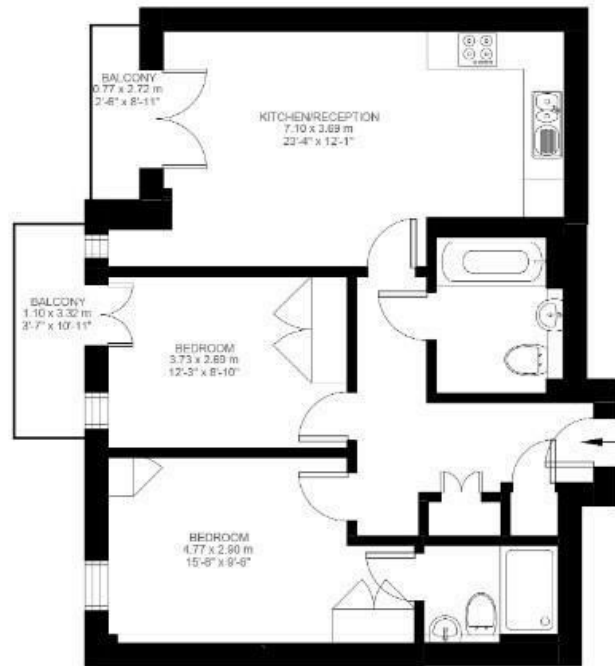


2 Bedroom Flat

Approx internal area:

706 sqft 66 sqm

While we do try our very best, floor plans are produced as a guide only and we take no responsibility for the precise accuracy with which any property is represented



First Floor



Palace Road, Brixton, SW2

