



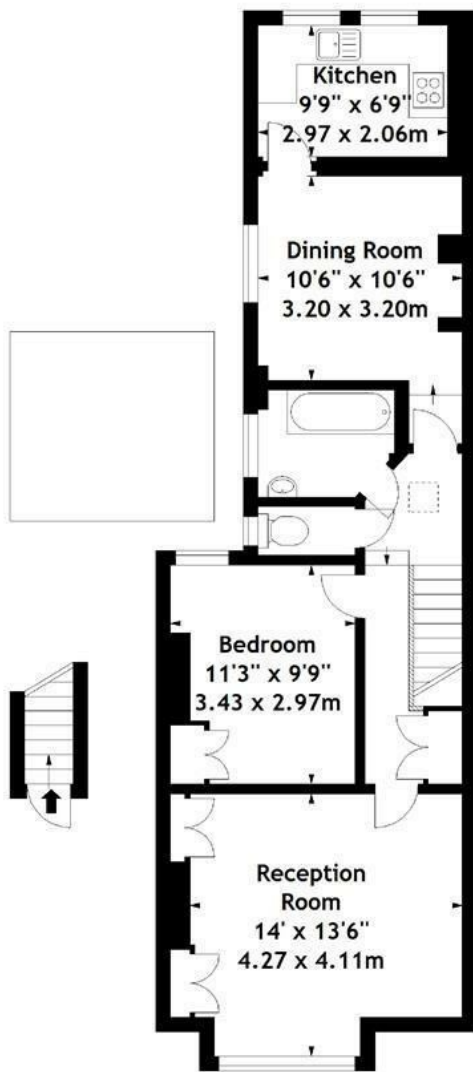
## Temple Road, Chiswick, W4 5NW

A spacious and light first floor converted apartment within this Victorian terraced house. Situated in a very popular residential road within walking distance to Chiswick High Road, with its extensive shopping and restaurants. Local transport links include Chiswick Park and Turnham Green tube stations, numerous bus routes, and convenient vehicular access via A4/M4 to Central London and Heathrow. The accommodation provides; master bedroom, reception room, dining room, kitchen, bathroom, and cloakroom. Available 1st March. Unfurnished.

**£1,400 Per Month**

- Quiet residential road
- Great for transport links
- Main reception room
- Dining room
- Double bedroom
- Bathroom
- Unfurnished
- Available 1st March
- Council Tax Band D

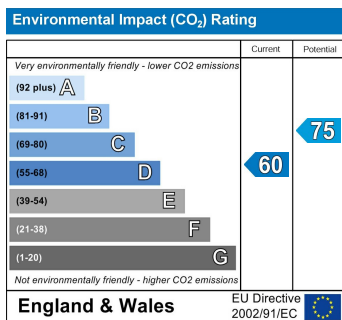
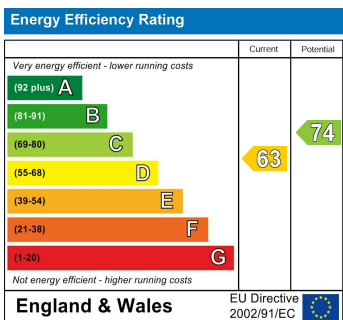
Temple Road, W4  
 Approx. Gross Internal Area  
 663 Sq Ft - 61.59 Sq M



Ground Floor  
 Entrance

First Floor

Measured in accordance with RICS guidelines. Every attempt is made to ensure accuracy, however all measurements are approximate. This floor plan is for illustrative purposes only and is not to scale.  
 © Datography Ltd 2017  
 Photographs \* Floorplans \* Virtual Tours  
 Tel: 0845 643 4401 www.datography.com



5-7 Turnham Green Terrace, Chiswick, London, W4 1RG  
 Tel 020 8747 8800  
 E-mail [lettings@whitmanandco.com](mailto:lettings@whitmanandco.com)  
 Website [www.whitmanandco.com](http://www.whitmanandco.com)



MISREPRESENTATION ACT 1967  
 Whitman & Co. for themselves and for the vendors give notice that these particulars do not constitute any part of, an offer of contract. All statements contained in these particulars are made without responsibility on the part of Whitman & Co. or the vendor. None of the statements contained in these particulars is to be relied upon as statements or representations of facts. Any intending purchaser must satisfy himself by inspection or otherwise as to the correctness of each of the statements contained in these particulars. The vendor does not make or give, and neither Whitman & Co. or any person in their employment has any authority to make or give, any representation or warranty whatever in relation to the property.