



Skelton Walk, Woodhouse, Sheffield

Perfect for a first time buyer/investor is this good sized two bedroom top floor flat. Very popular residential area with great local amenities. On street parking and communal gardens. Ready to move into.

Asking Price Of £85,000

- TWO BEDROOMS
- TOP FLOOR FLAT
- MODERN AND SPACIOUS THROUGHOUT
- READY TO MOVE INTO
- ON STREET PARKING



Property Description

Perfect for a first time buyer/investor is this good sized two bedroom top floor flat. Very popular residential area with great local amenities. On street parking and communal gardens. Ready to move into.

HALLWAY

Entrance into the good sized hallway with neutral decor and laminate flooring. Two ceiling lights and radiator. Intercom system and smoke alarm. Doors to the lounge, two bedrooms, bathroom and storage cupboard.

LOUNGE/DINER

19' 10" x 10' 11" (6.05m x 3.33m)

Neutrally decorated and with laminate flooring. Two ceiling lights, two radiators and two windows. Door to the kitchen.

Skelton Walk, Woodhouse, Sheffield



KITCHEN

11' 4" x 6' 0" (3.47m x 1.84m)

Fitted with ample modern wall and base units with contrasting worktop and tiled splash backs. Sink with mixer tap. Space for a freestanding cooker, fridge/freezer and washing machine. Ceiling light, radiator and window. Combi boiler.

BEDROOM 1

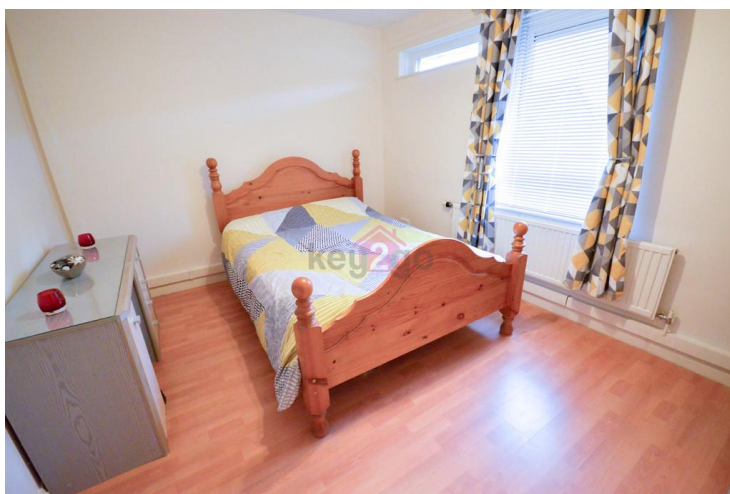
12' 8" x 9' 8" (3.87m x 2.96m)

A good sized double bedroom with neutral decor and laminate flooring. Ceiling light, radiator and window.

BEDROOM 2

8' 7" x 9' 7" (2.63m x 2.94m)

A further double bedroom with ceiling light, radiator and window. Neutral decor and laminate flooring.



BATHROOM

7' 3" x 6' 2" (2.23m x 1.88m)

Comprised of a bath with electric shower, pedestal sink and low flush WC. Ceiling light, radiator and obscure glass window. Storage cupboard.

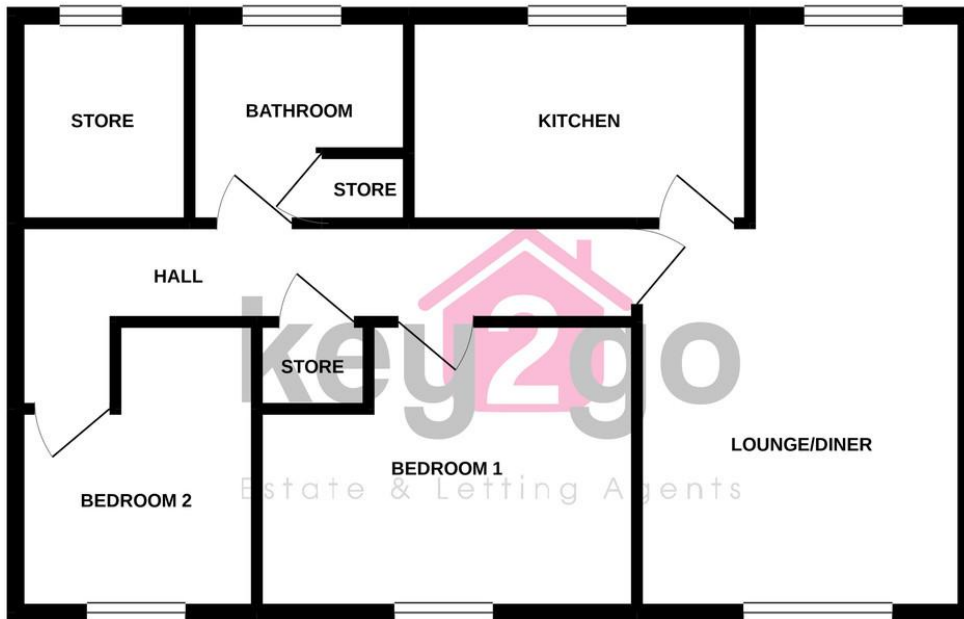
PROPERTY DETAILS

- FULLY UPVC DOUBLE GLAZED
- GAS CENTRAL HEATING
- COMBI BOILER
- LEASEHOLD



Skelton Walk, Woodhouse, Sheffield

GROUND FLOOR
631 sq.ft. (58.6 sq.m.) approx.



TOTAL FLOOR AREA: 631 sq.ft. (58.6 sq.m.) approx.

Whilst every attempt has been made to ensure the accuracy of the floorplan contained here, measurements of doors, windows, rooms and any other items are approximate and no responsibility is taken for any error, omission or mis-statement. This plan is for illustrative purposes only and should be used as such by any prospective purchaser. The services, systems and appliances shown have not been tested and no guarantee as to their operability or efficiency can be given.
Made with Metropix ©2020

Tenure

Leasehold

Council Tax Band

A

Viewing Arrangements

Strictly by appointment

Contact Details

38a High Street

Mosborough

Sheffield

South Yorkshire

S20 5AE

www.key2go.co.uk

enquiries@key2go.co.uk

0114 2478819

EPC TO BE CONFIRMED

Agents Note: Whilst every care has been taken to prepare these sales particulars, they are for guidance purposes only. All measurements are approximate and for general guidance purposes only and whilst every care has been taken to ensure their accuracy, they should not be relied upon and potential buyers are advised to recheck the measurements.

rightmove

Zoopla



PrimeLocation
Find the home you deserve

nTheMarket.com

