



Flat 9, Tribeca Apartments, Heneage Street

London, E1 5AZ

£2,600 pcm

Fees Apply

- Secure Private Development
- Double Bedrooms
- Modern Neutral Décor
- Juliette Balcony
- Communal Garden
- Excellent Transport Links



1



3



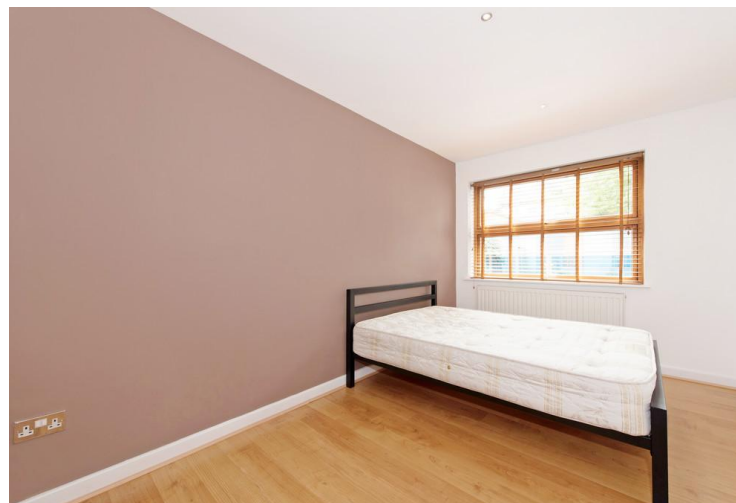
2

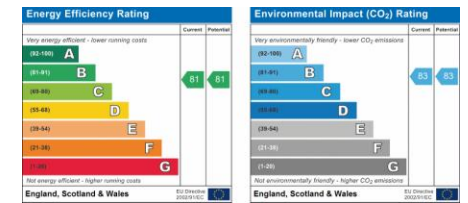
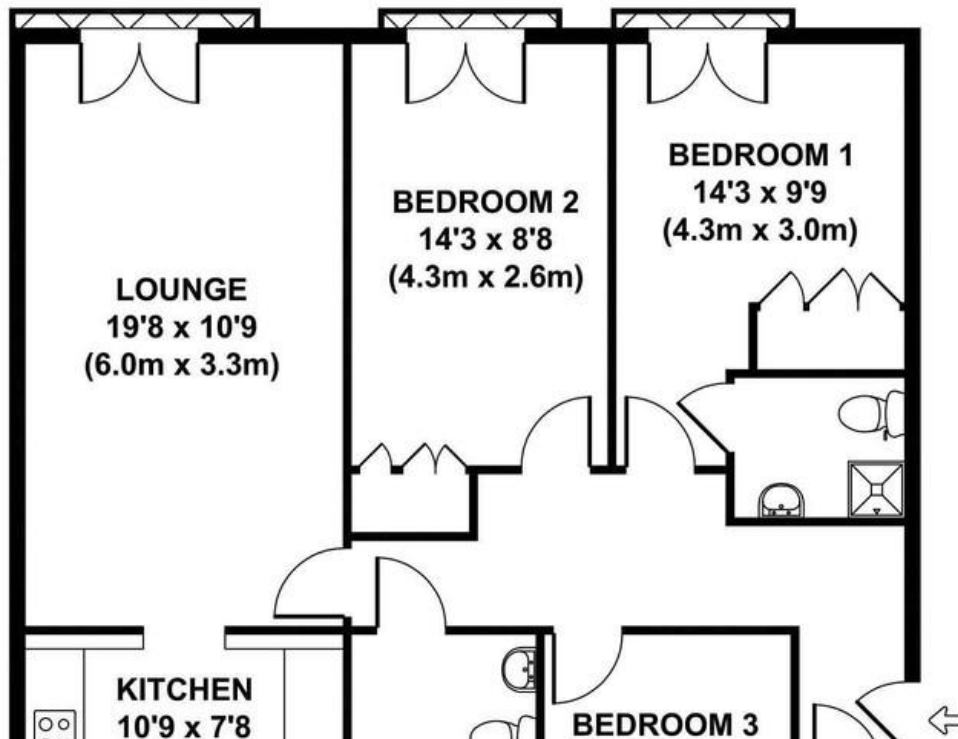
Property Description

Enviably located just a short distance from the City and on the doorstep of Spitalfields Market and trendy Brick Lane, this stylish and contemporary three bedroom, two bathroom apartment is ideal for young professionals. Set within the ultra chic 'Tribeca' development in the heart of Spitalfields, located just off Brick Lane and within easy reach of the vast array of bars and restaurants of Spitalfields, Shoreditch and Hoxton, the location is unbeatable.

This breathtaking property comprises a contemporary open-plan kitchen together with all mod cons, spacious double bedrooms with fitted wardrobes and modern bathroom. The property carries a neutral decor throughout and also offers high quality wood veneer flooring, recessed contemporary low voltage down lights and contemporary vertical feature radiators just to name a few of the features. The development boasts individually designed living spaces with private balconies for all apartments and a communal garden for all residents to enjoy. This apartment also enjoys access to a private terrace off the living room, ideal for entertaining. Available furnished.

The closest underground stations are Aldgate East (District and Hammersmith & City lines) and Shoreditch (East London line). With Liverpool Street (Central, Metropolitan, Hammersmith & City and Circle lines, British Rail) also within easy reach while for motorists there is easy access to the A13 for routes out of London to the East.





Find us on

mydeposits.co.uk



[rightmove](http://rightmove.com)
find your happy

Zoopla.co.uk

PrimeLocation



Registered Office

Suite C, 36-40 Copperfield Road,
London, E3 4RR /08050057

www.netlettings.com
management@netlettings.com
020 8981 5551

Agents Note: Whilst every care has been taken to prepare these particulars, they are for guidance purposes only. All measurements are approximate and for general guidance purposes only and whilst every care has been taken to ensure their accuracy, they should not be relied upon and potential tenants are advised to recheck the measurements.