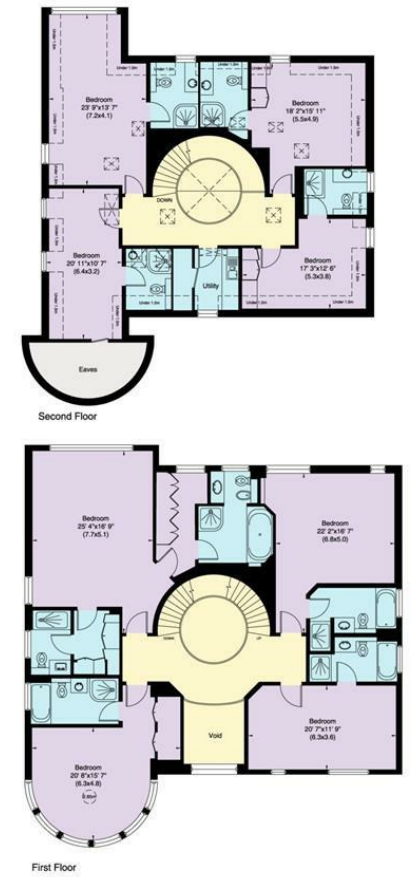
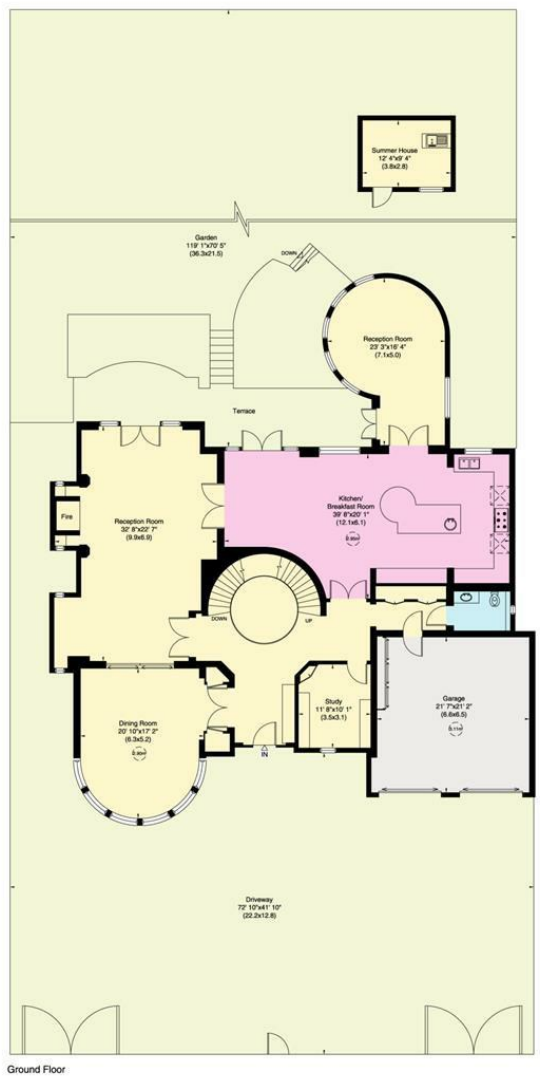




The Bishops Avenue, N2  
 Gross Internal area (approx.)  
 1025 Sq m (11032 Sq ft) Including Under 1.5m, Eaves and Summer House  
 982 Sq m (10570 Sq ft) Excluding Under 1.5m, Eaves and Summer House  
 For identification only, Not to Scale



### The Bishops Avenue, N2

We are delighted to present a spectacular fully air conditioned residence situated in this world- renowned location with outstanding leisure facilities.

The ground floor opens up to a large reception hall with drawing room, dining room, family room, study, state of the art kitchen and morning/family room. The 1st floor has a galleried area leading to the master bedroom suite with his and hers dressing room and bathrooms, 3 further bedrooms all ensuite. The 2nd floor leads to 4 bedrooms all with ensuite shower rooms and a utility room. The basement level houses the leisure area, entertainment suite, swimming pool, gymnasium, secondary kitchen, utility room and staff quarters.

A substantial rear garden approached by upper and lower terraces which have Italian style stone balustrading. The garden has been beautifully planted with a wide array of shrubs and plants. Carefully planned and concealed lighting illuminates the entire garden at night.

Double garage and off-street parking for several cars.

8 BEDROOMS: 8 BATHROOMS: LARGE RECEPTION AREA: FAMILY ROOM: SWIMMING POOL: GYMNASIUM: ENTERTAINMENT SUITE: OFF-STREET PARKING: STAFF QUATERS

**SOLE AGENT**

**£10,000,000**



SALES 020 8458 7311 E sales@glentree.com  
 RENTALS 020 8209 1144 E rentals@glentree.com  
 FAX 020 8209 0307 W www.glentree.com

Glentree Estates Ltd  
 698 Finchley Road  
 London NW11 7NE

