



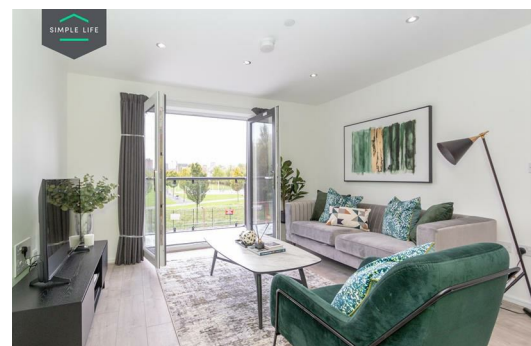
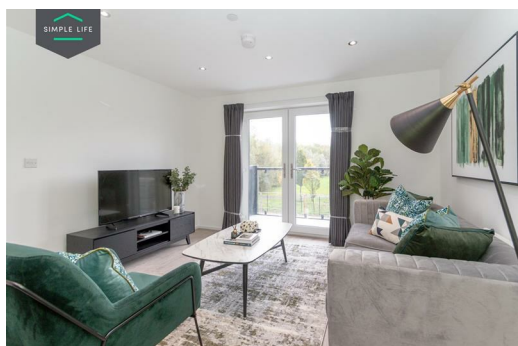
Empyrean, 9 Clarence Street, Salford

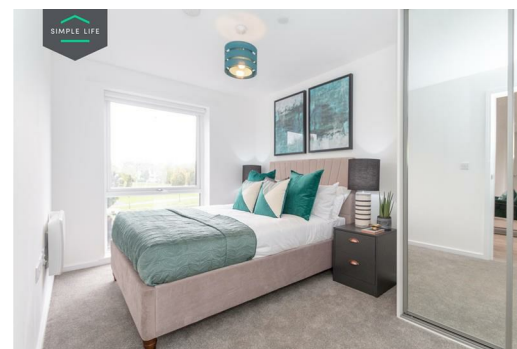
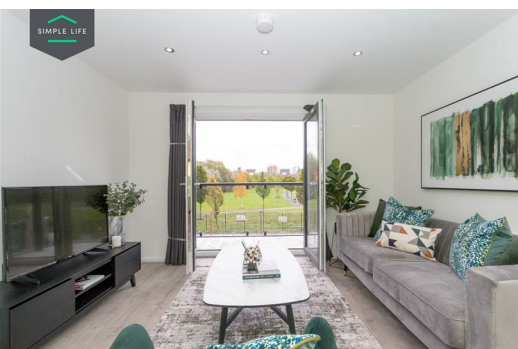
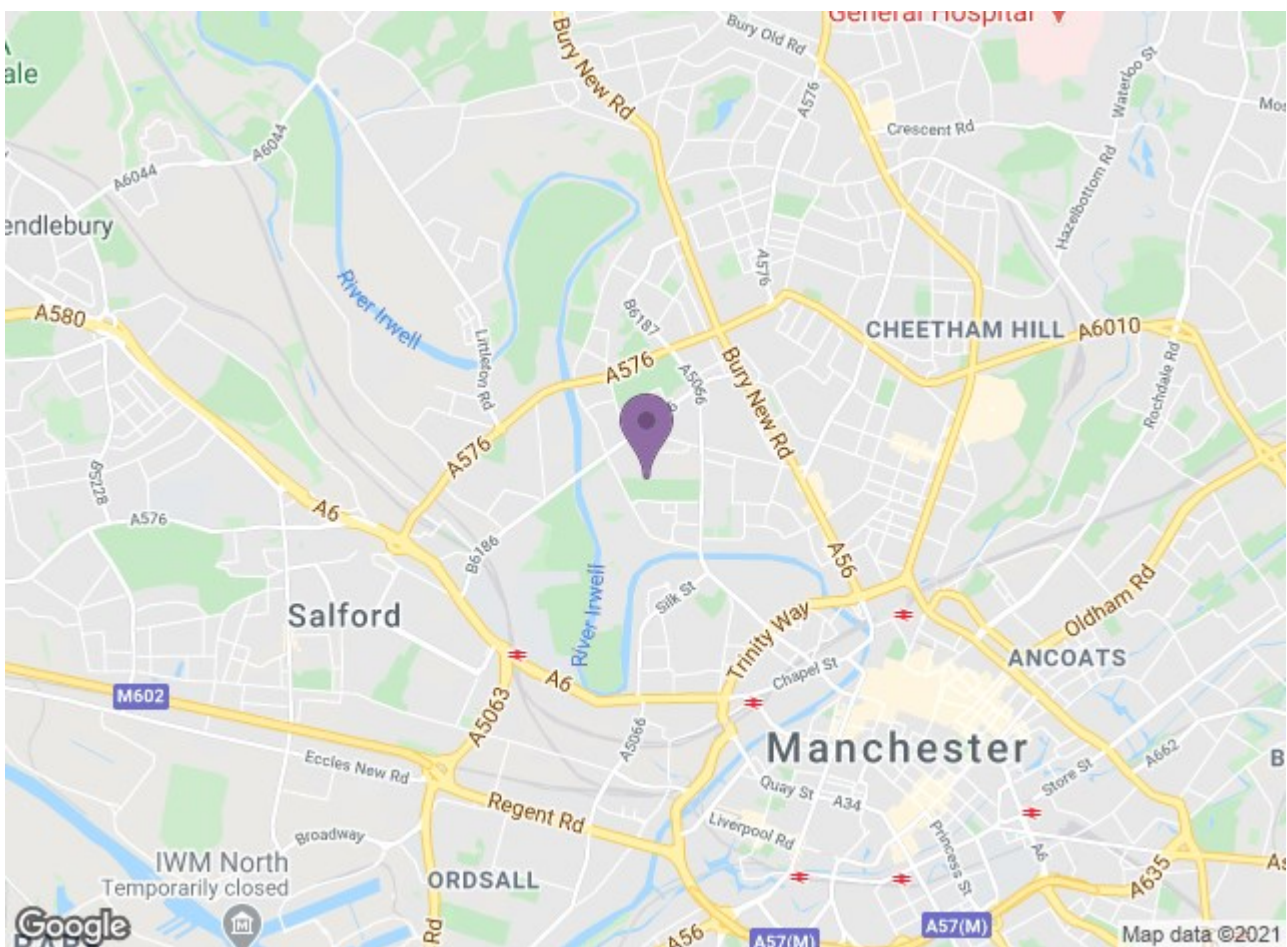
£765 PCM

A Striking new development of apartments in Salford, just a 20 minute walk from Manchester's Deansgate. Inspired by astronomer William Crabtree who made the area his home in the 1600s, Empyrean translates as the highest heaven – and you can call a slice of it your own!

The Halley is a two bedroom apartment ideally designed for shared accommodation. When you enter the Halley you walk straight into the hub of the home; the kitchen/diner with integrated appliances gives you an ideal entertaining space. As you go further into the apartment, the room becomes a good sized living area with French windows opening onto a Juliet balcony on the ground floor or full balcony on upper floors bringing in natural light and enhancing the property's views. The two bedrooms are equal in size mirroring each other on either side of the apartment, each with a fully fitted bathroom, with one also having access through to the kitchen/diner.

With 298 apartments spread across six blocks either side of the newly renovated Church of Ascension, we have a range of 1, 2 and 3 bedroom properties available including those designed specifically for people sharing. Situated directly opposite Green Grosvenor Park and a stone's throw away from the river Irwell, these homes have something to offer to all. Ideal for professionals, young families or couples wanting an easy commute without the city centre pricetag.





Energy Efficiency Rating				Environmental Impact (CO ₂) Rating			
Band	Score	Current	Target	Band	Score	Current	Target
A	92-100			A	1-10		
B	81-91			B	11-20		
C	69-80			C	21-30		
D	55-68			D	31-40		
E	40-54			E	41-50		
F	21-39			F	51-60		
G	1-20			G	61-70		

England & Wales

Ascend
Built on higher standards