



Berkeley, Plot 15 Whistledown View
Upavon, SN9 6EF



Berkeley, Plot 15 Whistledown View,
Upavon, SN9 6EF

£337,000

WHISTLEDOWN VIEW

Upavon, Wiltshire

COMING SOON

Redcliffe
HOMES



Description

'The Berkeley' is an impressive detached bungalow that makes excellent use of the space throughout. It features an open-plan living/dining room, a kitchen, an en suite master bedroom and a second bedroom, in addition to a utility and a family bathroom. There is parking for two cars and a single garage.

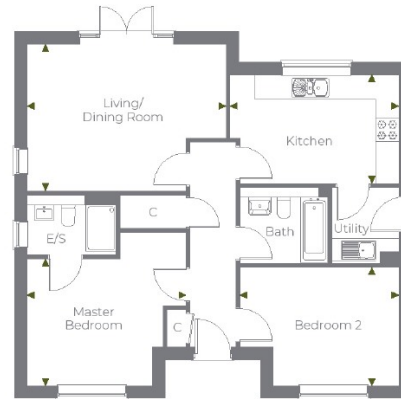
Strakers are delighted to be appointed as selling agents for Redcliffe Homes and their exceptional new development in Upavon. With a superb mix of stylish 3,4 and 5 bedroom houses set alongside brand new 2 and 3 bedroom detached bungalows, this exciting new development is likely to have a broad appeal and could be an ideal location for families, young professionals and downsizers alike. Upavon is a charming village nestled in the Pewsey Vale. New developments in popular villages such as this are a rare find.

Situation

Property Information

BERKELEY

2 BEDROOM BUNGALOW
PLOTS 5, 6(h), 13(h) & 15(h)



Ground Floor

GROUND FLOOR

Living/dining	5190mm x 3821mm	17' 0" x 12' 5"
Kitchen	4400mm x 2846mm	14' 4" x 9' 3"
Master Bedroom	4147mm x 3313mm	13' 6" x 10' 8"
Bedroom 2	4142mm x 3089mm	13' 5" x 10' 1"

TOTAL AREA: 845 SQ FT | 78.5 SQ M

◀ The room sizes shown are taken from the dimension arrows on the floor plans, and a tolerance of +/- 50mm is allowed. External finishes on certain designs, layouts, window positions and styles may vary, please check with the Sales Advisor. These floor plans are a guide only and may be subject to change. Total area is approximate only. Computer generated image indicative only. (h) Denotes handed plot.

6 / 7 Market Place, Devizes, Wiltshire, SN10 1HT
Tel: 01380 723451
Fax: 01380 729198
Email: devizes@strakers.co.uk

www.strakers.co.uk

■ Chippenham
■ Corsham

■ New Homes
■ Malmesbury

■ Swindon
■ Devizes

■ Auction
■ Lettings