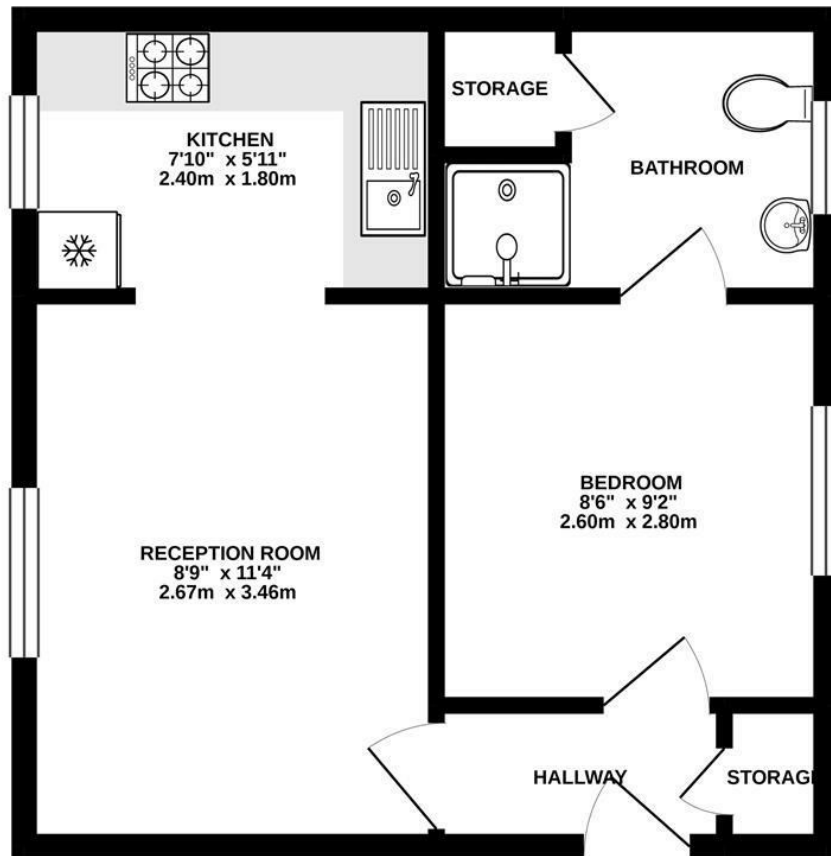


**Beaumont Place
Isleworth
TW7 7LB**

£925

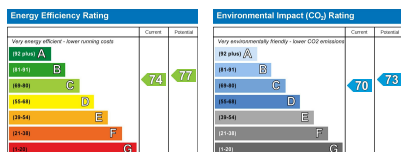


FIRST FLOOR 358 sq.ft. (33.3 sq.m.) approx.



TOTAL FLOOR AREA : 358 sq.ft. (33.3 sq.m.) approx.

Whilst every attempt has been made to ensure the accuracy of the floorplan contained here, measurements of doors, windows, rooms and any other items are approximate and no responsibility is taken for any error, omission or mis-statement. This plan is for illustrative purposes only and should be used as such by any prospective purchaser. The services, systems and appliances shown have not been tested and no guarantee as to their operability or efficiency can be given.
Made with Metropex 5/2020



Care has been taken in the preparation of these particulars, however, their accuracy is not guaranteed and they do not form part of any contract. Measurements stated must be considered maximum.

- Modern Apartment
- Shower Room
- Close to Local Amenities
- One Double Bedroom
- Allocated Parking Space
- EPC rating C

Presented in good condition throughout and set in a popular location, a spacious one double bedroom first floor flat.

This property is bright and airy throughout and offers a spacious lounge, a great place to kick back and unwind. With a modern kitchen you have the perfect place to prepare your evening meals. Further benefits include a double bedroom with built in wardrobes, a modern en-suite shower room, a communal garden and one allocated parking space.

The property is conveniently located with many amenities including a large Tesco nearby. Bus links are within easy reach, as well as Twickenham station and the high street, all a short stroll away.

This lovely property ticks all the boxes for a single professional or a couple. Viewings are highly advised.

Chase Buchanan are bonded members of ARLA PropertyMark

For more information or to book a viewing, please contact:

020 8758 1755

isleworth@chasebuchanan.london

7 Odeon Parade, 480 London Road,
Isleworth, Middlesex, TW7 4DE

**Chase
Buchanan**
Our community, your home