

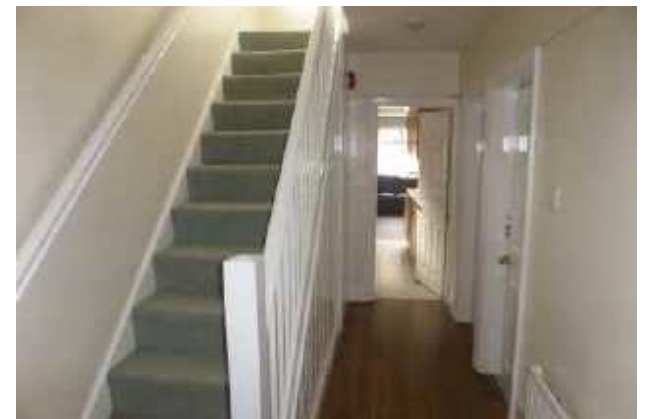


Jordan fishwick

MANCHESTER
PARRS WOOD ROAD



**40 Parrs Wood Road,
Manchester M20 4RW**
£1,500 Per calendar month



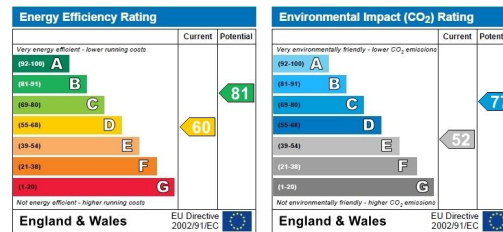
The Property

AVAILABLE NOW. We have to let a very spacious 4 DOUBLE BEDROOM shared house for families or professional sharers! Located on Parrs Wood Road, the property has excellent transport links to both Withington, Didsbury & the City Centre whilst benefiting from close access to shops in Ladybarn and Withington.

The property comprises of; 2 Large Double bedrooms downstairs with a Fully Fitted Kitchen, Downstairs Toilet, Lounge & Decent Sized Garden with outside storage. Upstairs, there are a further 2 Double Bedrooms, Modern Fitted Bathroom with Bath and a spare room which can be used for storage.

To view, call our Withington Branch on 0161 438 2411

EPC Graph



- AVAILABLE NOW
- PROFESSIONALS OR FAMILIES
- 4 DOUBLE BEDROOMS
- 2 BATHROOMS
- LARGE GARDEN
- COUNCIL TAX BAND C
- CLOSE TO WITHINGTON AND DIDSBURY
- MODERN FITTED KITCHEN AND BATHROOMS
- RECENTLY PAINTED

Postcode - M20 4RW

EPC Rating - D

Floor Area - sq ft

Local Authority - Manchester City Council

Council Tax - Band C





These particulars are believed to be accurate but they are not guaranteed and do not form a contract. Neither Jordan Fishwick nor the vendor or lessor accept any responsibility in respect of these particulars, which are not intended to be statements or representations of fact and any intending purchaser or lessee must satisfy himself by inspection or otherwise as to the correctness of each of the statements contained in these particulars. Any floorplans on this brochure are for illustrative purposes only and are not necessarily to scale.

Offices also at: Wilmslow, Macclesfield, Hale, Sale, Chorlton, Glossop, Manchester & Salford

160-164 Wellington Road, Withington, Manchester, M20

0161 438 2414

withington@jordanfishwick.co.uk
www.jordanfishwick.co.uk