



637a Hitchin Road, Luton, Bedfordshire, LU2 7UP
£625

- One Bedroom Maisonette
- Available Immediately

- Refurbished
- Must Be Viewed

- Stopsley Location

*** P&R Property Lettings *** Spacious One Bedroom Maisonette *** REFURBISHED THROUGHOUT *** Fitted Kitchen *** Large Double Bedroom *** STOPSLEY LOCATION *** 1 Minute Walk To Shops *** Available For Immediate Move In *** Must Be Viewed ***

LIVING ROOM 14'1" X 11'9" (4.29M X 3.59M)

Window to side.

KITCHEN 8'5" X 7'7" (2.56M X 2.30M)

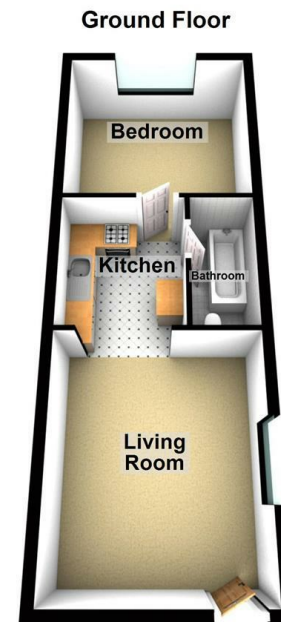
Open plan, door to:

BEDROOM 10'8" X 11'9" (3.25M X 3.59M)

Window to rear, door.

BATHROOM 8'5" X 3'11" (2.56M X 1.19M)

Door to:



Energy Efficiency Rating		Current	Potential
Very energy efficient - lower running costs			
(92 plus)	A		
(81-91)	B		
(69-80)	C		
(55-68)	D		
(39-54)	E		
(21-38)	F		
(1-20)	G		
Not energy efficient - higher running costs			
England & Wales		EU Directive 2002/91/EC	