



## One West India Quay, Hertsmere Road, London, E14

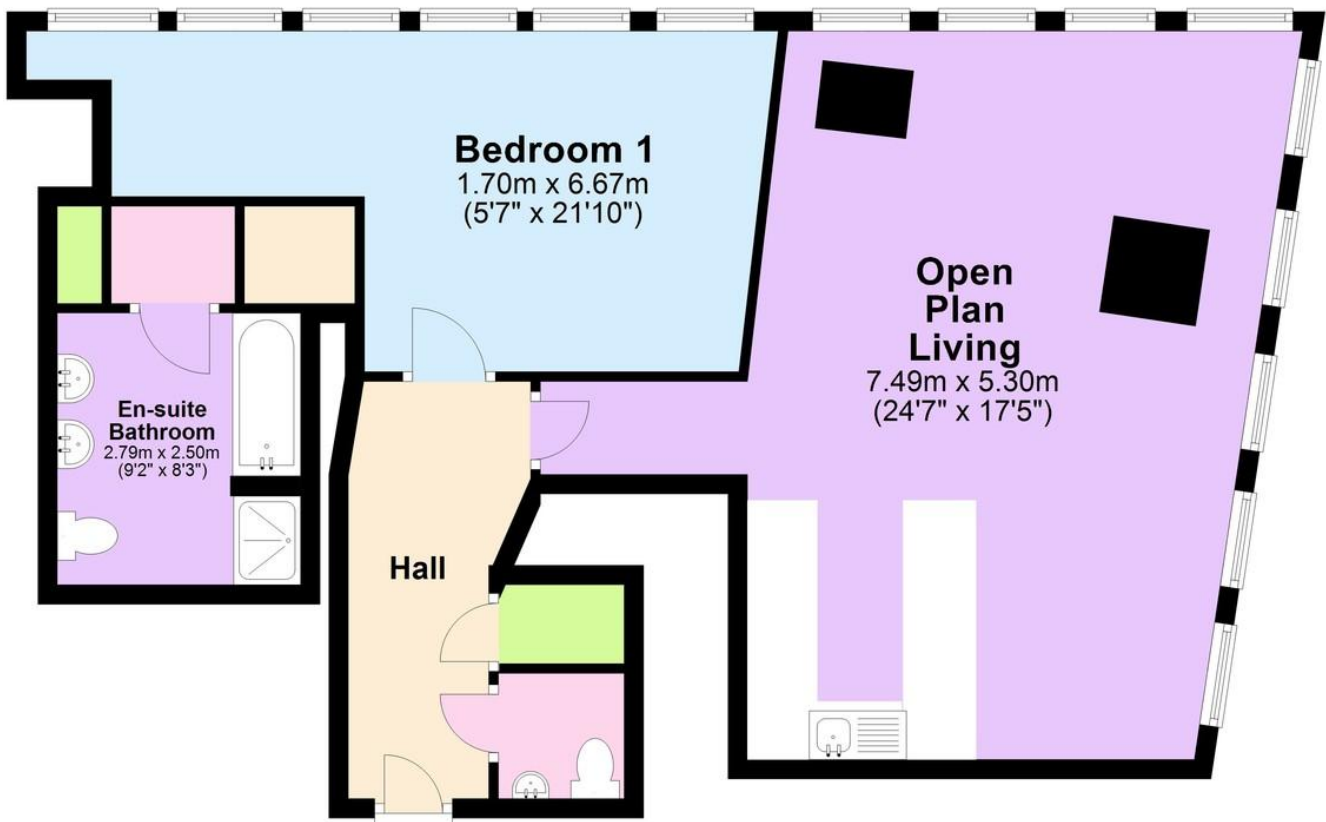
One West India Quay is situated to the North of the Canary Wharf Business Centre approximately a 5-10 minute walk to Cabot Square. Its location is Hertsmere Road and off of this street are a number of local hot spots including the LA Fitness Gym and a Multiplex Cinema.

- 22nd Floor Stunner!
- Same Building as Marriott
- Less than 5 minute walk into Canary Wharf
- Luxury Mod Cons with Air Cooling in Summer

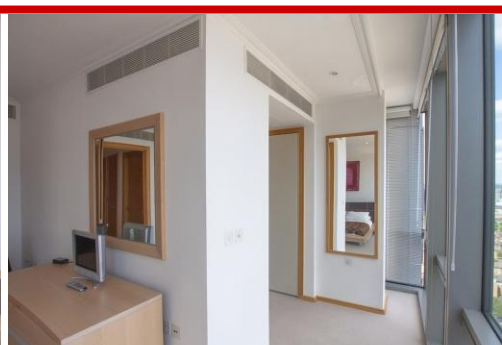


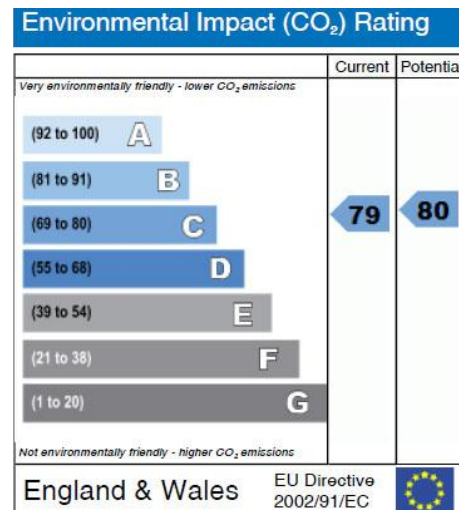
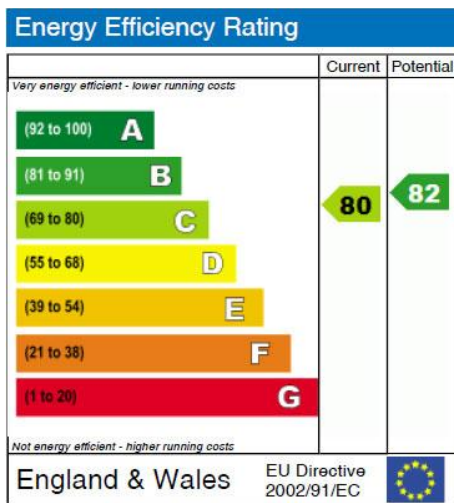
## 26th Floor

Approx. 79.9 sq. metres (860.1 sq. feet)



Total area: approx. 79.9 sq. metres (860.1 sq. feet)





### 655 Commercial Road, London, E14 7LW

**Disclaimer**  
 River Habitat, their clients and any joint agents give notice that: 1. They have no authority to make or give any representations or warranties in relation to the property. These particulars do not form any part of an offer or contract and must not be relied upon as statements or representations of fact. 2. Any areas, measurements or distances are approximate. The text, photographs and plans are for guidance only and are not necessarily a complete representation of the property. Photographs are taken using a wide angle lens camera. 3. It should not be assumed that the property has all necessary planning, building regulations or other consents and River Habitat have not tested any services, equipment or other facilities. Purchasers must satisfy themselves by inspection or otherwise