

- Two Bedroom, First Floor Apartment
- Off Road Parking
- Superb Location

- Spacious Living Accommodation
- Ideal Investment Opportunity
- Ground Rent only £10pa



024 7771 0780



www.up-estates.co.uk

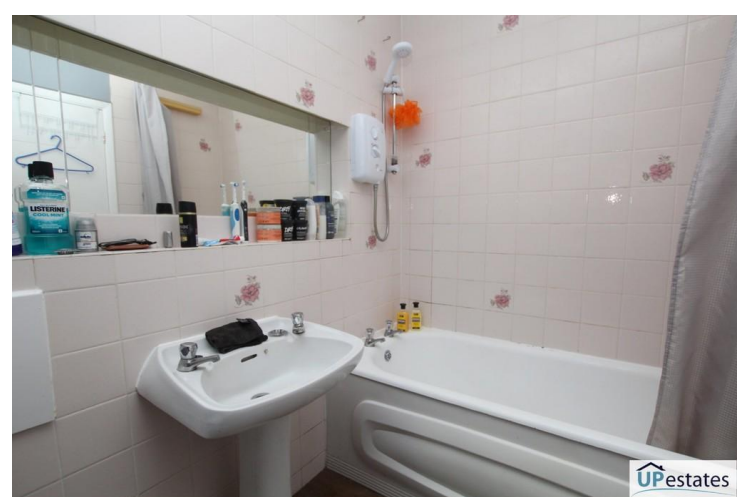


enquiries@upestates.co.uk

Up Estates is pleased to present this two double bedroom, first floor apartment which is well-presented and is situated in the popular area of Allesley in Coventry. Offering off-road parking, electric storage heaters and double glazing throughout. In brief, the property comprises; Hall, good-sized Lounge/Diner, Kitchen, Two Double Bedrooms and the Bathroom. The ground rent is £10pa, and the service charge is £100pcm. Viewing is strongly advised.

HALL With secure access from the main entrance, access to lounge and into the bathroom.

BATHROOM 7' 10" x 5' 6" (2.39m x 1.7m) A fully tiled family bathroom having a three piece suite comprising of low level WC, panelled bathtub with shower over and pedestal wash basin.



LOUNGE 18' 2" x 11' 10" (5.54m x 3.63m) Spacious and well presented lounge / dining room with sliding patio doors onto the private balcony area, electric heaters and doors off to both bedrooms and the kitchen.



KITCHEN 9' 4" x 7' 10" (2.87m x 2.39m) The kitchen offering a neat range of wall and base mounted units with work surfaces over, stainless steel splash back, space for electric oven and extractor fan over, stainless steel sink with drainer and mixer tap and with space and facilities to accommodate further appliances.



BEDROOM ONE 11' 5" x 10' 5" (3.48m x 3.18m) A spacious first bedroom with double glazed window, fitted wardrobe space, electric storage heater and a double glazed window to the front aspect.



Arden Court, Mackenzie Close, Coventry
£135,000 (Offers Over)



BEDROOM TWO 11' 3" x 7' 4" (3.45m x 2.26m) A second double bedroom having electric storage heater, fitted wardrobe space and a double glazed window to the side aspect.



OUTSIDE There are well presented communal grounds, residents parking off-road and this property has one single garage which is located in a block.





Floor Plan

Floor area 59.0 sq. m. (635 sq. ft.) approx

Total floor area 59.0 sq. m. (635 sq. ft.) approx

This Floor Plan is for illustration purposes only and may not be representative of the property. The position and size of doors, windows and other features are approximate. Unauthorized reproduction prohibited. © PropertyBOX

- 1: MONEY LAUNDERING REGULATIONS - Intending purchasers will be asked to produce identification documentation at a later stage and we would ask for your co-operation in order that there will be no delay in agreeing the sale.
- 2: These particulars do not constitute part or all of an offer or contract.
- 3: All measurements have been taken as a guide to prospective buyers only, and are not precise.
- 4: While we endeavour to make our sales particulars fair, accurate and reliable, they are only a general guide to the property and, accordingly, if there is any point which is of particular importance to you, please contact the office and we will be pleased to check the position for you, especially if you are contemplating travelling some distance to view the property.
- 5: Up Estates has not tested any apparatus, equipment, fixtures, fittings or services, so cannot verify they are in working order or fit for their purpose.
- 6: Up Estates has not sought to verify the legal title of the property and the buyers must obtain verification from their solicitor.