



Asking Price Of £730,000

12 Minerva Way
Barnet
EN5 2FJ

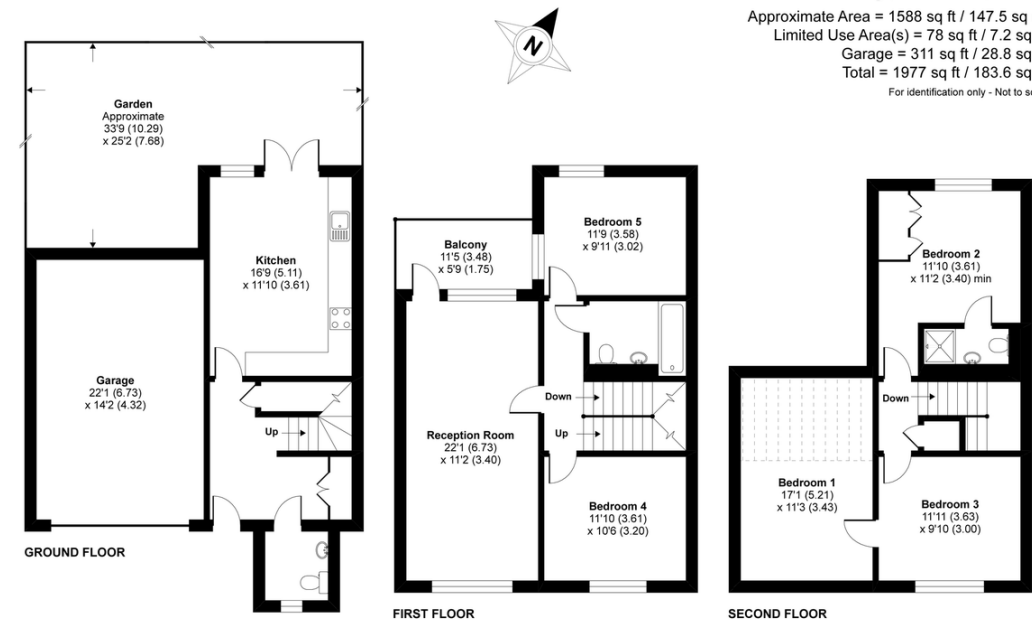
EPC Rating ‘91’

Council Tax Band

- Four Bedrooms
- Mid Terraced Family Home
- Set On Three Levels
- Leasehold
- Large Reception Room
- Luxury Fitted Kitchen/Diner
- Current EPC Rating B
- Two Bathrooms

Minerva Way, Barnet, EN5

Approximate Area = 1588 sq ft / 147.5 sq m
Limited Use Area(s) = 78 sq ft / 7.2 sq m
Garage = 311 sq ft / 28.8 sq m
Total = 1977 sq ft / 183.6 sq m
For identification only - Not to scale



Floor plan produced in accordance with RICS Property Measurement Standards incorporating International Property Measurement Standards (IPMS2 Residential). © nrichcom 2020. Produced for Spencer & Sener. REF: 669244

Agents Note: Whilst every care has been taken to prepare these particulars, they are for guidance purposes only. All measurements are approximate and for general guidance purposes only and whilst every care has been taken to ensure their accuracy, they should not be relied upon and potential buyers/tenants are advised to recheck the measurements