



Weymouth Terrace, Bethnal Green, E2

BUTLER & STAG



**Set within this low rise purpose built development is this split level three bedroom apartment, providing huge scope to add value through improvement.**



## Leasehold

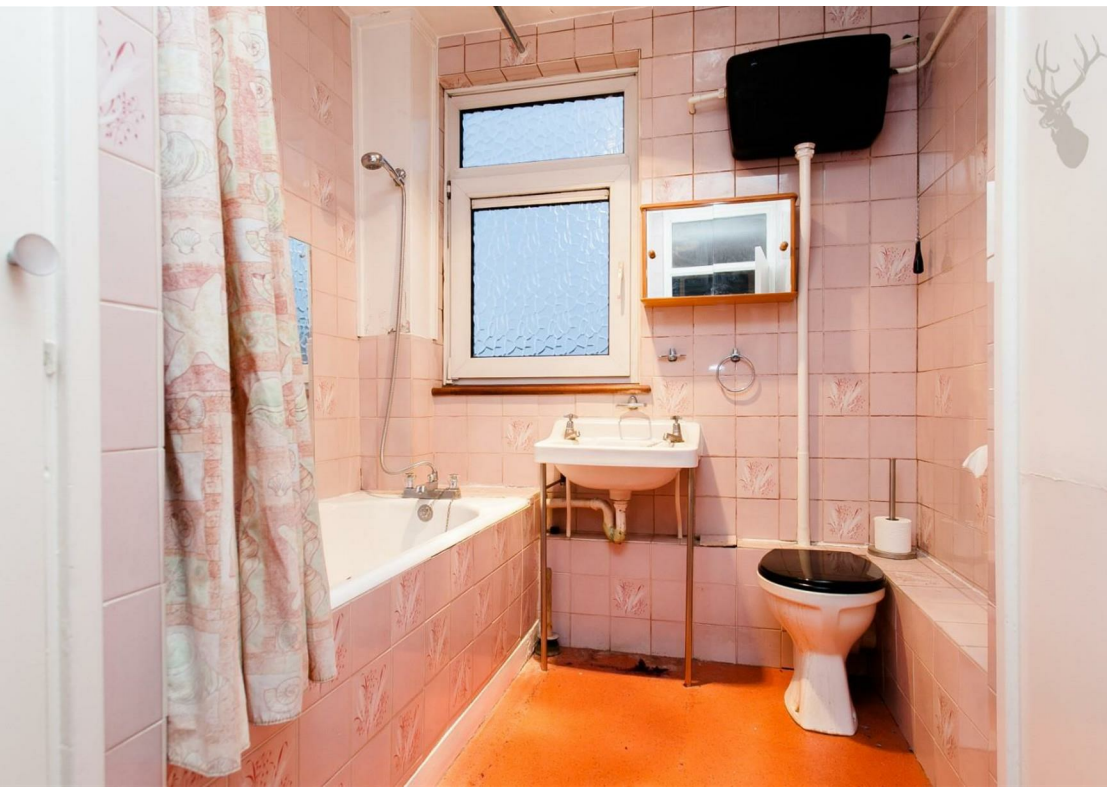
- Split Level Apartment
- Over 900 Sq ft of Living Space
- Down Stairs Cloakroom
- Hoxton Station A Moments Walk Away
- Three Bedrooms

Comprising of three double bedrooms, large reception, separate kitchen, bathroom and useful storage spaces.

The property suits those looking to implement their own ideas and tastes in the form of a cosmetic refurbishment and would make an ideal home or rental investment.

Fellows Court is ideally located within close proximity to the City and vibrant hot spots including Columbia Road, Shoreditch, Brick Lane, Hoxton Square and Spitalfields. Hoxton Overground is just moments away while Old Street station (Northern Line and National Rail) is also close by.



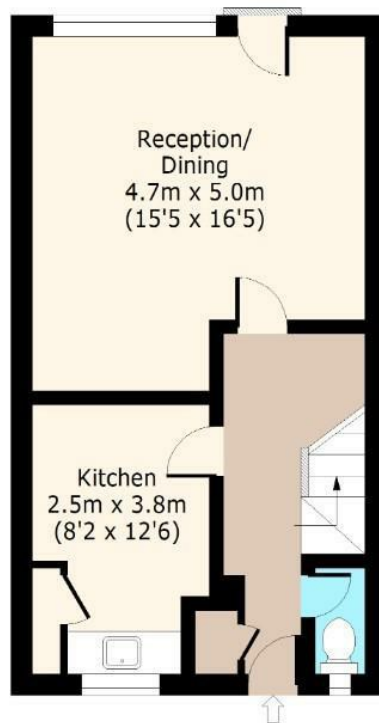


## Fellows Court, Weymouth Terrace, E2



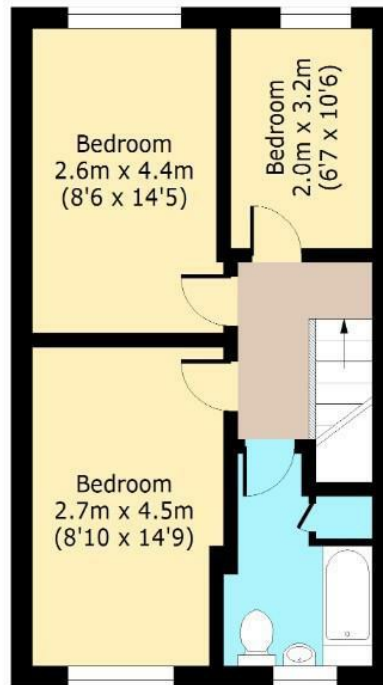
### Fourth Floor

Approx. 42.27 Sq. meters (455 Sq. feet)



### Fifth Floor

Approx. 42.27 Sq. meters (455 Sq. feet)



Total area: approx. 84.54 Sq. meters (910 Sq. feet)

For illustration purposes only - not to scale

[www.lpaplus.com](http://www.lpaplus.com)

IMPORTANT NOTICE - These particulars have been prepared in good faith and they are not intended to constitute part of and offer or contract. We have not performed a structural survey on this property and the services, appliances an specific fittings have not been tested. All photographs, measurements, floor plans and distances referred to are given as a guide and should not be relied upon.

# BUTLER & STAG

☎ 020 8102 1236

🏠 508 Roman Road, Bow, London, E3 5LU

✉ [bow@butlerandstag.com](mailto:bow@butlerandstag.com)

[www.butlerandstag.uk](http://www.butlerandstag.uk)