



Ridgdale Street, London, , E3 2TN
£3,250 Per Month

Elms Estates are pleased to be able to bring to the market To Let this large 5 Bedroom Terraced House situated within easy reach of Bow Church DLR Station and Bow Road (District Line) Tube Station and the Multiple Bus Routes servicing Bow Road with routes in to the city, West End and beyond. For car drivers there is also excellent access to the A12.

The property offers good sized living accommodation with a Reception Room that opens on to a Kitchen/Dinner with patio doors directly to the garden. There is a main family bathroom and the master bedroom on the top floor enjoys an en-suite shower room while there is also an additional WC on the ground floor.

This property is available to move into NOW and early viewing is highly recommended in order to avoid disappointment.



Kitchen/Lounge/Diner
21'4" x 17'1" (6.50m x 5.21m)

Bedroom 1
10'6" x 12'2" (3.20m x 3.71m)

WC

Bedroom 2
11'10" x 10'6" (3.61m x 3.20m)

Bedroom 3
12'2" x 8'10" (3.71m x 2.69m)

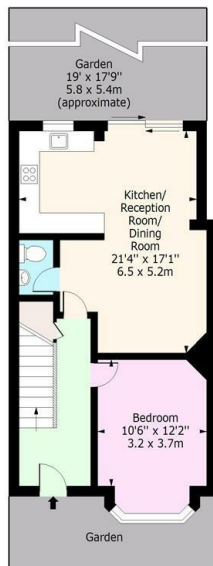
Bedroom 4
8'10" x 8'6" (2.7 x 2.6)

Bathroom

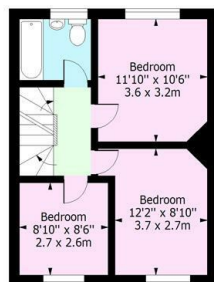
Bedroom 5
17'5" x 17'5" (5.31m x 5.31m)



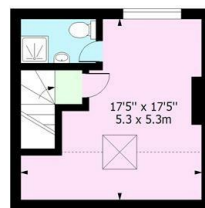
Ridgdale Street, E3
Approx. Gross Internal Area 1370 Sq Ft - 127.27 Sq M



Ground Floor
Floor Area 624 Sq Ft - 57.97 Sq M



First Floor
Floor Area 444 Sq Ft - 41.25 Sq M



Second Floor
Floor Area 302 Sq Ft - 28.06 Sq M

For Illustration Purposes Only - Not To Scale
www.ipaplus.com

Energy Efficiency Rating		Environmental Impact (CO ₂) Rating	
Current	Potential	Current	Potential
<p>Very energy efficient - lower running costs</p> <p>(92 plus) A</p> <p>(81-91) B</p> <p>(69-80) C</p> <p>(55-68) D</p> <p>(39-54) E</p> <p>(21-38) F</p> <p>(1-20) G</p> <p>Not energy efficient - higher running costs</p>		<p>Very environmentally friendly - lower CO₂ emissions</p> <p>(92 plus) A</p> <p>(81-91) B</p> <p>(69-80) C</p> <p>(55-68) D</p> <p>(39-54) E</p> <p>(21-38) F</p> <p>(1-20) G</p> <p>Not environmentally friendly - higher CO₂ emissions</p>	
England & Wales EU Directive 2002/91/EC		England & Wales EU Directive 2002/91/EC	