

BULB

ESTATE AGENT

Intentionally Better



6 Paget Street

, Wolverhampton, WV1 4AR

Guide price £230,000

An excellent opportunity to acquire a semi-detached house that is an ideal investment opportunity with 6 bedrooms over three floors. Extremely well looked after and boast good sized rooms and well-maintained communal areas such as the kitchen and the lounge, this property benefits from having Victorian characteristic and a homely feel.

- 6 Bedrooms
- Double Glazed
- Gas Central Heating
- No Upward Chain
- Rear Garden
- Online Auction
- Over 8% Rental Yield

Viewing

Please contact our Bulb Estate Agents Office on 01902 283 109 if you wish to arrange a viewing appointment for this property or require further information.



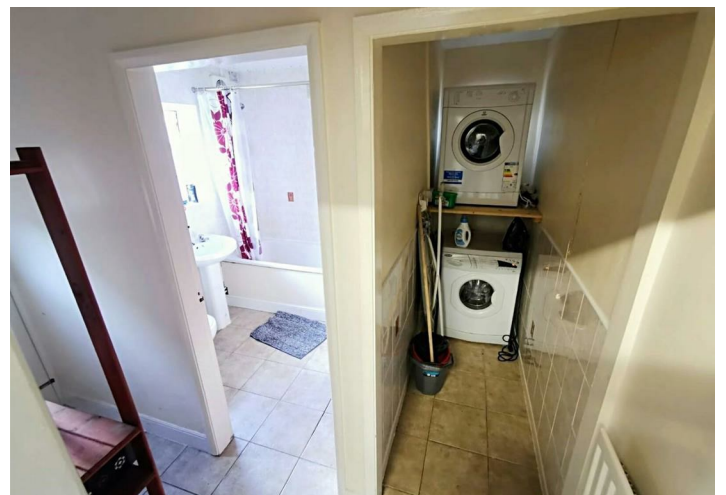
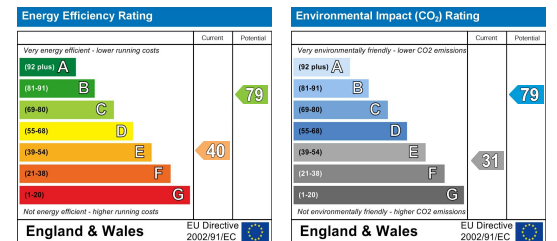
Floor Plan



Area Map



Energy Efficiency Graph



These particulars, whilst believed to be accurate are set out as a general outline only for guidance and do not constitute any part of an offer or contract. Intending purchasers should not rely on them as statements of representation of fact, but must satisfy themselves by inspection or otherwise as to their accuracy. No person in this firm's employment has the authority to make or give any representation or warranty in respect of the property.