





- Top Floor Apartment
- Open Plan
- Secluded Balcony
- En-Suite
- Lift Access
- Double Height Ceilings
- Modern Fittings
- Bridge Views
- Allocated Parking
- Sought After Location





** Video Tour on Our YouTube Channel |
<https://youtu.be/xEM1NgYMz9k> **

We offer for sale this superbly presented top floor apartment located within the sought after Ochre yards development on the vibrant Quayside.

Located in an enviable position with excellent access to all of the amenities around Newcastle and Gateshead Quayside, with further amenities available in the city centre. This property will appeal to a variety of buyers.

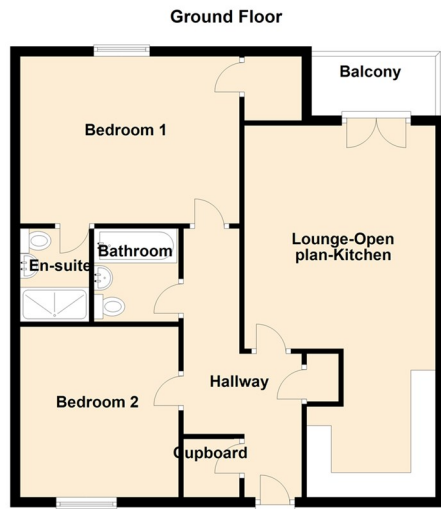
Briefly comprising:- communal hallway with stairs and lift access to the top floor, private individual courtyard style entrance, hallway with storage, fabulous open plan lounge/kitchen with modern units and integrated appliances, double height ceilings and French doors and picture window leading to a secluded balcony with River and bridge views over the Tyne. There are two bedrooms; the main bedroom with an en-suite facility, and there is also a modern bathroom with shower over the bath. Externally, there are communal areas and allocated parking. The property also benefits from double glazing and electric heating.

Early viewings are recommended. To book yours or for more information please call our Low Fell team on 0191 487 0800.

Covid-19 Viewing Guidelines

For the safety of our clients, yourselves and our staff we are currently only allowing viewings to go ahead if viewers wear appropriate PPE (masks and gloves). Social distancing rules must also be adhered to at all times. Where possible we will encourage vendors to leave the property while the viewing is going ahead. We also will only allow 2 people to view a property at any one time. We may share contact numbers where requested by NHS to prevent the spread of Covid-19.



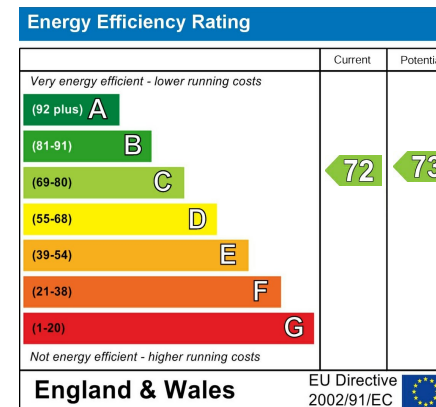


Lounge 14'9" x 12'9" (4.51 x 3.89)

Kitchen 7'10" x 9'2" (2.40 x 2.81)

Bedroom One 11'1" x 14'6" (3.38 x 4.43)

Bedroom Two 10'5" x 11'3" (3.19 x 3.45)



The difference between house and home

You may download, store and use the material for your own personal use and research. You may not republish, retransmit, redistribute or otherwise make the material available to any party or make the same available on any website, online service or bulletin board of your own or of any other party or make the same available in hard copy or in any other media without the website owner's express prior written consent. The website owner's copyright must remain on all reproductions of material taken from this website.

Gosforth 0191 236 2070
 Newcastle 0191 284 4050
 Forest Hall 0191 605 3134
 High Heaton 0191 270 1122
 Low Fell 0191 487 0800
 Tynemouth 0191 257 2000
 Whitley Bay 0191 251 3000
 Property Management Centre 0191 236 2680



www.janforsterestates.com

