



Riverwalk, Westminster
London SW1P

GARTONJONES.COM



Riverwalk, Westminster London, SW1P

GARTON JONES.COM

49 Marsham Street Sales +44 (0) 20 7340 0480
London westminster@gartonjones.com
SW1P 3DP www.gartonjones.com

£2,000,000 Leasehold

A beautifully presented 2 double bedroom apartment for sale of approx. 1293sq.ft (120.1sq.m) on the 7th floor (with lift) of Riverwalk, a stunning new development situated on the banks of the River Thames by Vauxhall Bridge in Westminster. This bright and spacious apartment further comprises of a bright reception room with floor to ceiling windows accessing a large private balcony, there is a smart Kitchen with Miele integrated appliances, 2 en-suite bathrooms, a guest cloakroom and good storage including a walk in dressing area to the master bedroom and fitted wardrobes to bedroom 2. Additionally there is comfort cooling, underfloor heating in the wet rooms and a fully integrated Crestron home automation and entertainment system. Residents of Riverwalk enjoy exclusive private facilities including a fitness suite overlooking the Thames and a 24 hour concierge.

Lease: 999 Years from 14th July 2012
Service Charge: £13,532 Per Annum
Ground Rent: £1000 Per Annum

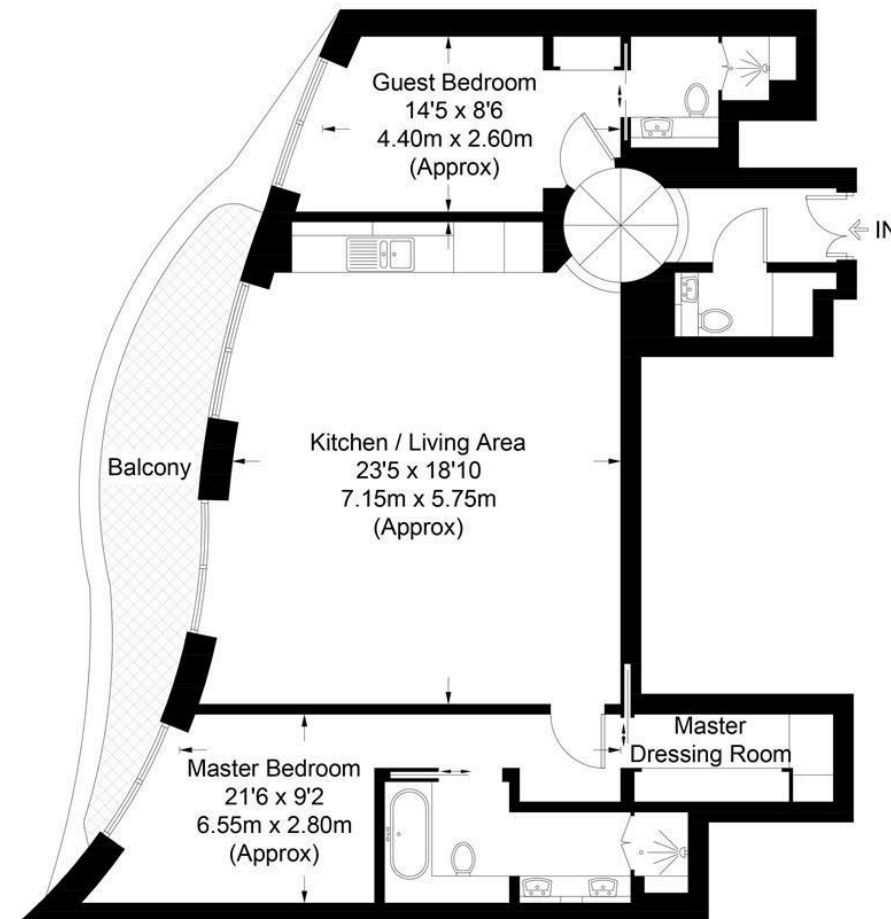
- 1293sq.ft (120.1sq.m)
- 7th Floor (With Lift)
- 2 Double Bedroom Apartment
- Open Plan Reception Room
- Kitchen with Miele Integrated Appliances
- 2 Bathrooms (1 En-Suite) + Guest Cloakroom
- Large Private Balcony
- Resident's Gym & 24 Hour Concierge
- Comfort Cooling & Underfloor Heating
- Walking Distance to Pimlico and Vauxhall Station



EPC certificate available on request.

Riverwalk

Approximate Gross Internal Area = 1293 sq ft / 120.1 sq m



Not to scale, for guidance only and must not be relied upon as a statement of fact.
All measurements and areas are approximate only and have been prepared in
accordance with the current edition of the RICS Code of Measuring Practice.

