



802 sq
ft



3



1



2

REDBRIK
ESTATE AGENTS

Helping you find
your home at...

Waterthorpe Gardens, Westfield, Sheffield

£600 pcm

Occupying a larger than average corner plot located within a short distance of Crystal Peaks/Drakehouse outlets is this superbly presented three bedroom end terrace house. Neutrally decorated throughout, the property includes a generous lounge, separate dining room, fitted kitchen, two double bedrooms (plus an additional single bedroom) and bathroom. Well placed for transport links including the Supertram network...

- Three Bedroom End Terrace House
- Generous Lounge With Sliding Doors To Garden
- Separate Dining Room
- Fitted Kitchen With Storage
- Master Bedroom With Fitted Wardrobes
- Two Further Bedrooms (One Double/One Single)
- Bathroom With Three Piece White Suite
- Corner Plot Garden With Patio & Lawn
- uPVC DG, GCH, Garage, Off Road Parking
- Energy Rating - D.

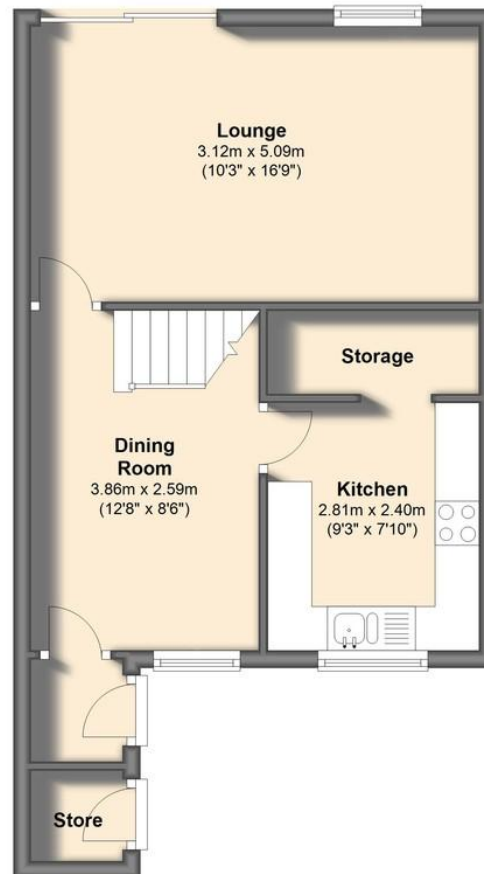




We endeavour to make these particulars as accurate as possible, but they should only be used as guidance and they do not constitute any part of the contract. All measurements are approximate and no guarantees are made to the services, heating systems, appliances (if any) or fittings as to their working order and no warranty can be given or implied.

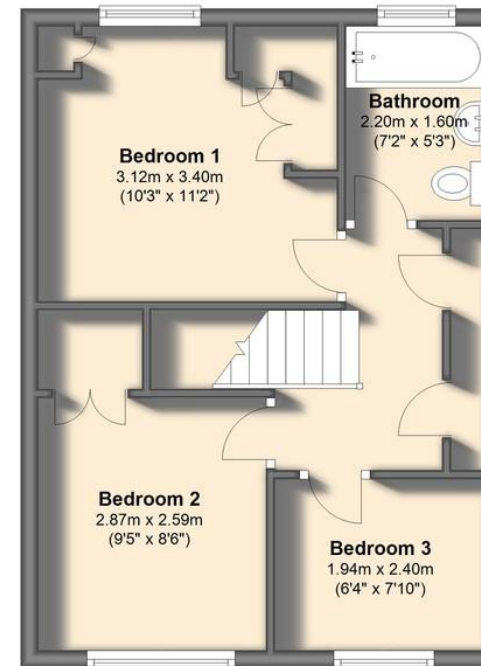
Ground Floor

Approx. 38.5 sq. metres (414.8 sq. feet)



First Floor

Approx. 36.0 sq. metres (387.8 sq. feet)



Total area: approx. 74.6 sq. metres (802.6 sq. feet)

You may download, store and use this material for your own personal use and research. You may not republish, retransmit, redistribute or otherwise make the material available to any party or make the same available on any website, on or off line service or hard copy without the website owner's express written consent. The website owner's copy right must remain on all reproductions of material taken from this website.

