

172 Oswald Road, Chorlton, M21 9AZ



JP & Brimelow
SALES

Price: £375,000

****VIDEO TOUR AVAILABLE**** A beautiful & stylishly presented, **THREE DOUBLE BEDROOMED**, bay fronted, period, mid terraced property located on a highly popular tree lined residential road off Kensington Road. Walking distance of Chorlton Village, close to all local amenities including restaurants/deli's/shops and the Metrolink station either in Firwood on Ryebank Road or Wilbraham Road in Chorlton giving you direct access to City centre and Media City at Salford Quays. The well-planned accommodation comprises; porch, entrance hallway, a lounge with a bay window to the front aspect, a family room and a stunning fitted kitchen/dining room with double glazed French doors leading into the enclosed private courtyard garden. To the first floor there is a landing leading to three double bedrooms and a fitted white three-piece white family bathroom with under floor heating. The property benefits from being warmed by a combi boiler providing gas fired central heating, double glazed throughout and an alarm system. To the front aspect there is a front enclosed garden with a good sized enclosed private landscaped rear courtyard garden. Would suit professionals or a young family due to its positioning for the local Primary Schools and Longford Park nearby. Early internal inspection highly recommended.



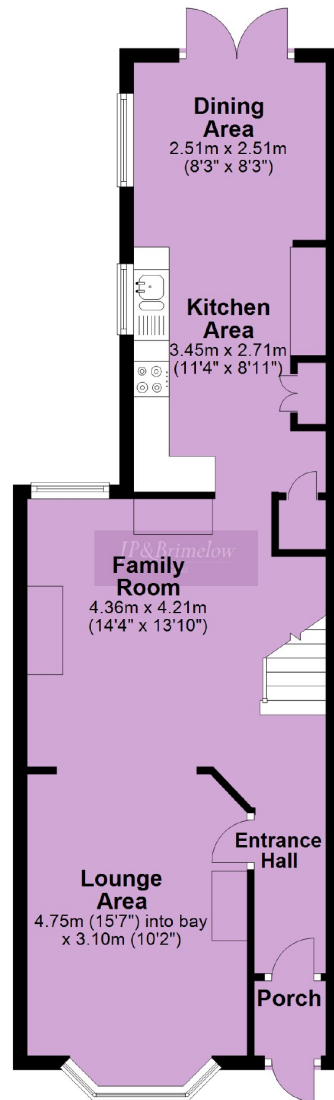


EPC Chart

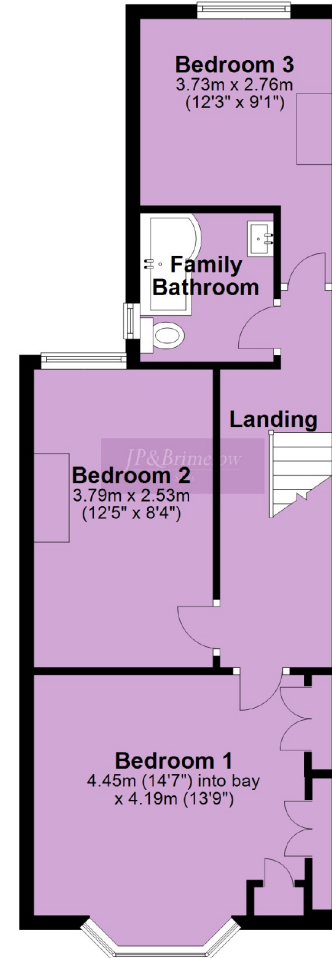


Freehold Council Tax Band: B

Ground Floor



First Floor



Chorlton & Didsbury Sales

430 Barlow Moor Road, Chorlton, Manchester, M21 8AD

Chorlton: 0161 882 2233 Didsbury: 0161 448 0622

E: chorlton@jpbrimelow.co.uk www.jpandbrimelow.co.uk



JP&Brimelow

SALES

NOTICE: J P & Brimelow Chorlton & Didsbury Ltd for themselves and for the vendors or lessors of this property whose agents they are give notice that:

- (i) the particulars are set out as a general outline only for the guidance of intending purchasers or lessees, and do not constitute, nor constitute part of, an offer or contract;
- (ii) all descriptions, dimensions, references to the condition and necessary permissions for use and occupation, and other details are given in good faith and are believed to be correct but any intending purchasers or tenants should not rely on them as statements or representations of fact but must satisfy themselves by inspection or otherwise as to the correctness of each of them;
- (iii) no person in the employment of JP & Brimelow Ltd has any authority to make or give any representation or warranty whatever in relation to this property.



Follow us on Twitter @jpandbrimelows