



SYMONDS + GREENHAM

Estate and Letting Agents



22 Woodside, Hull, East Yorkshire HU8 9FL

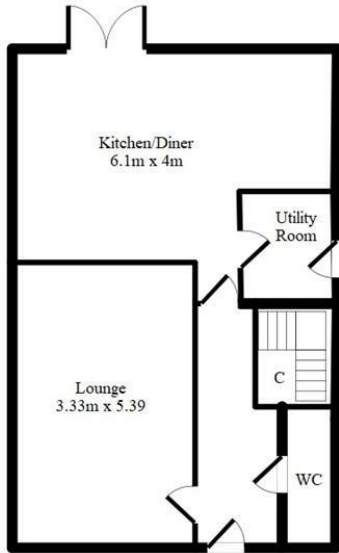
£295,000

SUTTON PLACE NEW BUILD DEVELOPMENT - FOUR BED DETACHED HOME - THREE BATHROOMS - DETACHED GARAGE AND DRIVE - GENEROUS REAR GARDEN - HELP TO BUY SCHEME AVAILABLE

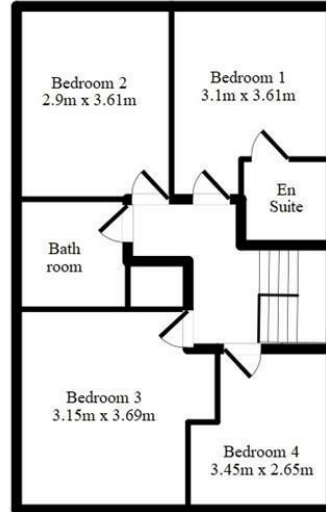
Sutton Village has long been one of the most sought after places to live in Hull and the new development at Sutton Place will be a welcome addition to the picturesque village. This exclusive development will consist of three and four bed semi detached, detached and terraced new build homes ranging from £235,000 to £345,000.

Plot 18 is a stunning four bed detached home with two bathrooms including an en suite to the main bedroom. This large property would be perfect for a family to turn into their dream home and is set up brilliantly for modern day family life from the excellent sized bedrooms and modern bathrooms on the first floor to the open plan aspect of the ground floor with a large kitchen/diner on offer, separate living room, and convenient downstairs WC and utility room. Externally this gem of a property keeps on giving with a generous westerly facing rear garden and detached garage and drive giving off street parking aplenty.

Call our New Homes Team and book your viewing today!



Ground floor



First floor

DISCLAIMER - Actual room sizes may differ slightly from those detailed on the above floorplans. Some plots will be a mirrored layout of the above floorplan.



Energy Efficiency Rating	
Current	Potential
Very energy efficient - lower running costs	
(92 plus) A	
(81-91) B	
(69-80) C	
(55-68) D	
(39-54) E	
(21-38) F	
(1-20) G	
Not energy efficient - higher running costs	
England & Wales	EU Directive 2002/91/EC

Environmental Impact (CO ₂) Rating	
Current	Potential
Very environmentally friendly - lower CO ₂ emissions	
(02 plus) A	
(81-91) B	
(69-80) C	
(55-68) D	
(39-54) E	
(21-38) F	
(1-20) G	
Not environmentally friendly - higher CO ₂ emissions	
England & Wales	EU Directive 2002/91/EC