

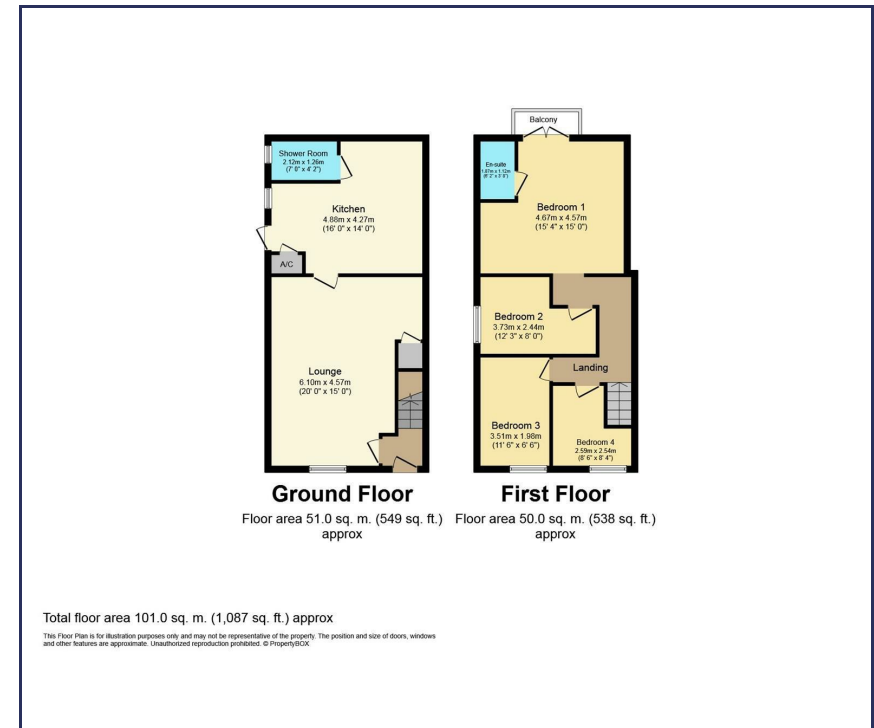


Navron , Llantwit Major, CF61 1UH
£299,950

BRINSONS

This is a Grade 2 listed, extended and full renovated stone built semi-detached in the centre of this coastal village. The property has four bedrooms (one with en-suite) to the first floor and a spacious lounge/diner, a 16x14 kitchen and a shower room. Outside there is a large garden to the rear enclosed and laid lawn with a private level side garden off the kitchen. A decked area to rear is reached via double doors from the master bedroom. Gas central heating is via a combi boiler and the property is fully double glazed. The property is located on what is commonly known as The Causeway. Boverton is a sought after village on the coast of the vale of Glamorgan to the east of Llantwit Major with the remains of a 12th Century castle

- Grade 2 Listed & extended Semi-Detached Property
- 4 Bedrooms
- 20 x 15 Lounge / Diner
- Fully Renovated Throughout
- Enclosed Side Garden
- Central Village Location
- En-Suite Shower Room
- Large Refitted Kitchen
- Generous Rear Garden
- EPC: E



Energy Efficiency Rating		Current	Potential
Very energy efficient - lower running costs			
(92 plus) A			87
(81-91) B			
(69-80) C			
(55-68) D			
(39-54) E		44	
(21-38) F			
(1-20) G			
Not energy efficient - higher running costs			
England & Wales		EU Directive 2002/91/EC	

You may download, store and use the material for your own personal use and research. You may not republish, retransmit, redistribute or otherwise make the material available to any party or make the same available on any website, online service or bulletin board of your own or of any other party or make the same available in hard copy or in any other media without the website owner's express prior written consent. The website owner's copyright must remain on all reproductions of material taken from this website.