

## Altair Close, London, N17 0BW



**£320,000**

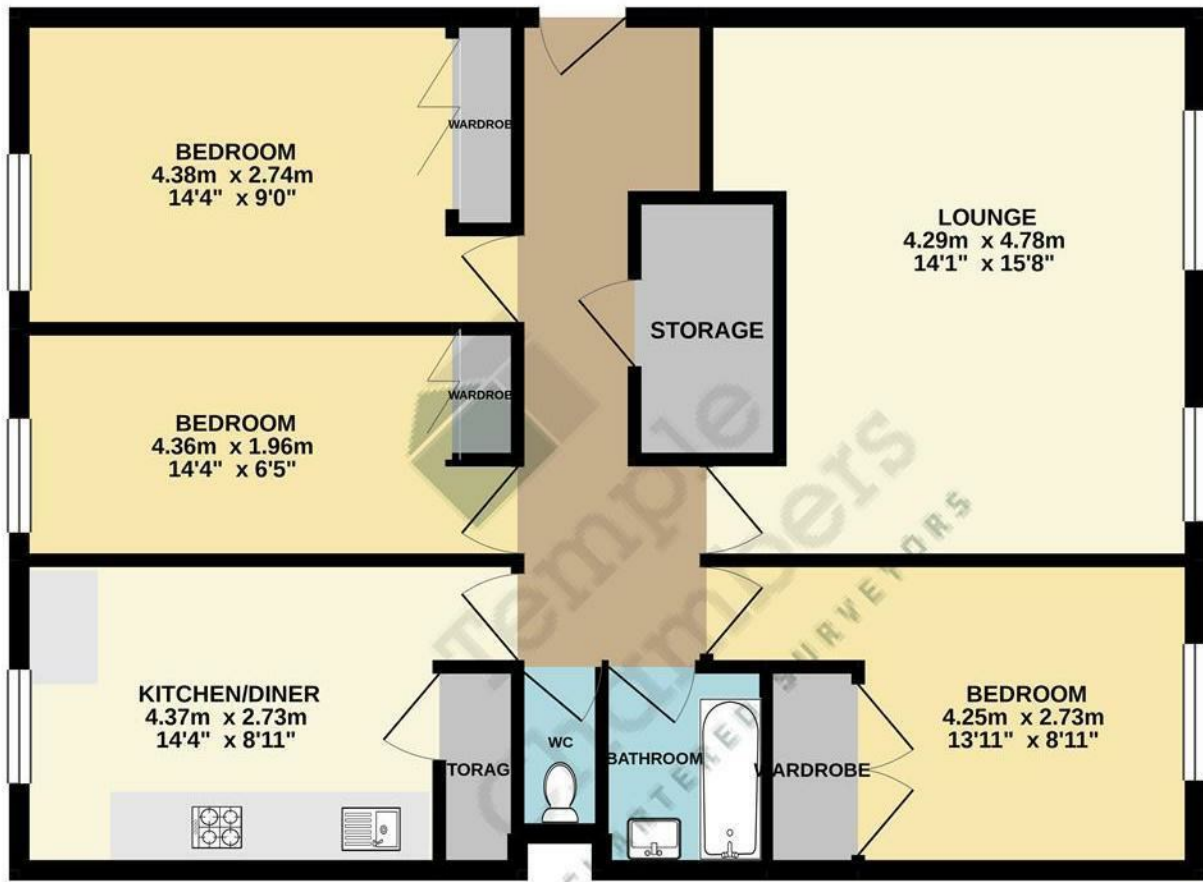
Kings Group are pleased to present this three bedroom ground floor flat for sale on a chain free basis. The property has been well maintained throughout and benefits from a spacious light and airy lounge, separate modern fitted kitchen with dining space, three double bedrooms with built in wardrobes, two piece bathroom suite with a separate W/C and ample storage space throughout. This would be an ideal opportunity for a first time buyer or investor.

Situated minutes away from the regeneration, the property is 0.4 miles to White Hart Lane Station with trains going directly to Liverpool Street Station and excellent bus routes connecting Central London and the surrounding areas. The property is moments away from local schools, amenities and restaurants and there is further development with new shops being built alongside the stadium. The High Road West project proposes a new public square with new restaurants and shops creating new jobs and growth within the local area.





77.2 sq. m. (831 sq. ft.) approx.



ALTAIR CLOSE, N17

TOTAL FLOOR AREA : 77.2 sq. m. (831 sq. ft.) approx.

Whilst every attempt has been made to ensure the accuracy of the floorplan contained here, measurements of doors, windows, rooms and any other items are approximate and no responsibility is taken for any error, omission or mis-statement. This plan is for illustrative purposes only and should be used as such by any prospective purchaser. The services, systems and appliances shown have not been tested and no guarantee as to their operability or efficiency can be given.  
Made with Metropix ©2020

| Energy Efficiency Rating                    |                         | Current | Potential |
|---------------------------------------------|-------------------------|---------|-----------|
| Very energy efficient - lower running costs |                         |         |           |
| (92 plus) <b>A</b>                          |                         |         |           |
| (81-91) <b>B</b>                            |                         |         |           |
| (69-80) <b>C</b>                            |                         |         |           |
| (55-68) <b>D</b>                            |                         |         |           |
| (39-54) <b>E</b>                            |                         |         |           |
| (21-38) <b>F</b>                            |                         |         |           |
| (1-20) <b>G</b>                             |                         |         |           |
| Not energy efficient - higher running costs |                         |         |           |
| <b>England &amp; Wales</b>                  | EU Directive 2002/91/EC |         |           |

| Environmental Impact (CO <sub>2</sub> ) Rating                  |                         | Current | Potential |
|-----------------------------------------------------------------|-------------------------|---------|-----------|
| Very environmentally friendly - lower CO <sub>2</sub> emissions |                         |         |           |
| (92 plus) <b>A</b>                                              |                         |         |           |
| (81-91) <b>B</b>                                                |                         |         |           |
| (69-80) <b>C</b>                                                |                         |         |           |
| (55-68) <b>D</b>                                                |                         |         |           |
| (39-54) <b>E</b>                                                |                         |         |           |
| (21-38) <b>F</b>                                                |                         |         |           |
| (1-20) <b>G</b>                                                 |                         |         |           |
| Not environmentally friendly - higher CO <sub>2</sub> emissions |                         |         |           |
| <b>England &amp; Wales</b>                                      | EU Directive 2002/91/EC |         |           |



Associated Offices in London, Essex and Hertfordshire  
Kings Head Office Tudor Lodge, Burton Lane, Goffs Oak, Hertfordshire EN7 6SY Tel: 01707-872000

