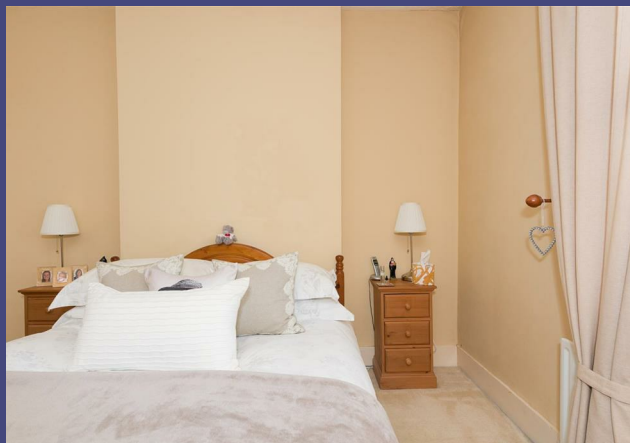


# Glovers Road Reigate Surrey

£550,000



RALPH JAMES

# FLOOR PLANS



Glovers Road, Reigate

Total Area: 92.0 m<sup>2</sup> ... 990 ft<sup>2</sup>

FOR ILLUSTRATIVE PURPOSES ONLY.

Whilst every attempt has been made to ensure the accuracy of the floor plan shown, all measurements, positioning, fixtures, features, fittings and any other data shown are an approximate interpretation for illustrative purposes only and are not to scale.

No responsibility is taken for any error, omission, miss-statement or use of data shown.

The above statement applies to both 'Still Moving London LTD' and the Company or individual displaying this floor plan.

Unauthorised reproduction prohibited.

© Still Moving London LTD (www.stillmoving.london)

RALPH JAMES



## IN A NUTSHELL



enter text here



3 bedrooms



2 receptions rooms



1 bathrooms



enter text here



enter text here



# WHAT'S GREAT?

GUIDE PRICE: £550,000 - £575,000

Just a stone's throw away from Lesbourne Village, you have quaint cafes and shops on your doorstep. Reigate High Street is a quick 10-minute stroll away, popular for its independent shops, pubs and well-known restaurants.

At the front of the property is the generously sized living room, the bay window brightens up the room and brings in natural light throughout the year. There is a hallway cupboard that allows you to store coats and boots as you step through the front door.

At the back of the property is dining room, this is a great space for entertaining family and friends whilst creating something delicious in the kitchen. There is also a good amount of cupboard space and the deep green splashback offers a pop of colour. From here you have access to the garden with a patio and steps leading you up to the lawn. This secluded space is a lovely spot to enjoy some al-fresco dining or a summer BBQ with friends.

Upstairs you'll find two double bedrooms and a good sized single. The master has a built-in wardrobe space, and plenty of room to add in some additional furnishings. The family bathroom includes a large bath for you to soak and unwind with a glass of wine and a good book, the tiled finish will make cleaning a slightly easier task and you can add in some cupboard space to keep things neatly tidied away. There is also a W/C for guests.

This home is down a popular and sought after road, within the catchment area of some outstanding schools, this property has character features and is ready to move into with plenty of potential to make it your own.



Thomas likes it  
because....

"This house has good sized rooms and is in a great location, Reigate high street is very popular thanks to it's great selection of shops and eateries. Priory park is a great place for a stroll throughout the year, with entertainment and a café, you can enjoy some summer days with the family here before grabbing a bite to eat."

# SELLER'S SECRET

Coming soon...

## CLOSE TO HOME

enter text here

To buy or not to buy...

---

---

---

---

---

---



# RALPH JAMES



39 High Street | Redhill | RH1 1RX | 01737 765555  
admin@ralphjames.co.uk | www.ralphjames.co.uk