

6 Market Street,  
Leek, Staffordshire.  
ST13 6HZ  
Tel: 01538 383344



17 High Street,  
Buxton, Derbyshire.  
SK17 6ET  
Tel: 01298 27524

Estate Agents . Valuers . Auctioneers . Chartered Surveyors  
[www.buryandhilton.co.uk](http://www.buryandhilton.co.uk)  
Part of the Bagshaws Partnership

## To Let



### 5 The Green, Whiston, ST10 2HZ

- \* A delightfully situated stone built three bedroom semi-detached house.
- \* Located on the edge of the attractive Moorland village of Whiston, this semi-detached property is well placed for travelling towards the Potteries conurbation or the market towns of Leek, Cheadle and Ashbourne.
- \* Good sized three bedroomed accommodation with well dimensioned rooms throughout.
- \* Central heating and double glazing.
- \* Garage and off road parking on separate forecourt at the rear.

**AVAILABLE IMMEDIATELY**

**£595 Per Calendar Month**

## ACCOMMODATION

### Entrance Hall

With radiator. Store off under stairs.

### Cloakroom

With WC and wash basin. Radiator.

### Lounge 17'3 X 10'5 (5.26m X 3.18m)

With a solid fuel stove. Two radiators. Fitted carpet.



### Bedroom Two 10'5 X 7'7 (3.18m X 2.31m)

Radiator. Fitted carpet.



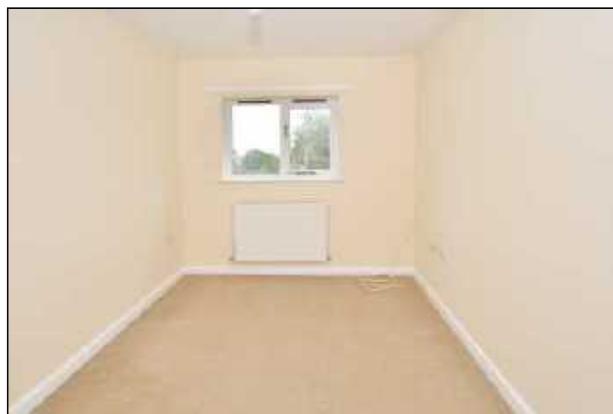
### Dining Kitchen 16'3 X 7'9 (4.95m X 2.36m)

Fully fitted with a comprehensive range of units consisting of stainless steel sink unit, base units, working surfaces and wall cupboards and incorporating a split level cooker. Plumbing for automatic washing machine. Radiator.



### Bedroom Three 6'1 X 5'10 (1.85m X 1.78m)

Radiator. Fitted carpet.



### Stairs to Landing

With radiator. Fitted carpet. Airing cupboard off housing gas central heating boiler.

### Bedroom One 16'3 X 7'9 (4.95m X 2.36m)

Radiator. Fitted carpet.

### Bathroom

With suite comprising bath, wash basin and WC. Electric shower.



### Outside

Enclosed lawned gardens to front and rear.

Garage and off-road parking on block paved forecourt at the rear.



### Services

All mains services connected.

Gas central heating.

Sealed unit double glazing.

### Viewing

By prior appointment through the Agents.

### References

References through HomeLet will be applied for by The Agent.

### Application

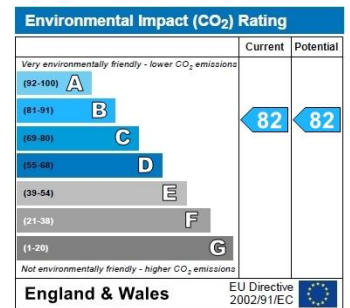
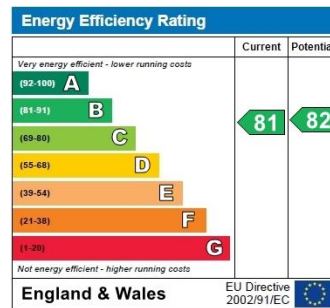
Applications for the tenancy of this property must be in writing to Bury and Hilton and on the prescribed 'Application for Tenancy' form.

### Proof of ID

In order to comply with Right to Rent Regulations we ask that prospective tenants provide proof of identity. Please bring your passport or appropriate ID.

### Deposit

A DEPOSIT OF £595 WILL BE TAKEN



Bury & Hilton Limited for themselves and for the vendor or lessor of this property whose agent they are, give notice that:

1. These particulars do not constitute any part of, an offer of a contract;
2. All statements contained in these particulars as to this property are made without responsibility on the part of Bury & Hilton Limited or the vendor or lessor;
3. None of the statements contained in these particulars as to this property are to be relied on as statements or representations of fact;
4. Any intending purchaser must satisfy himself by inspection or otherwise as to the correctness of each of the statements contained in these particulars;
5. The vendor or lessor does not make or give neither Bury & Hilton Limited nor any person in their employment has any authority to make or give, any representation's or warranty whatsoever in relation to this property.
6. Bury & Hilton Ltd operates a Complaints Handling Procedure, a copy of which is available from our Head Office, 6 Market Street, Leek, Staffordshire. ST13 6HZ.

