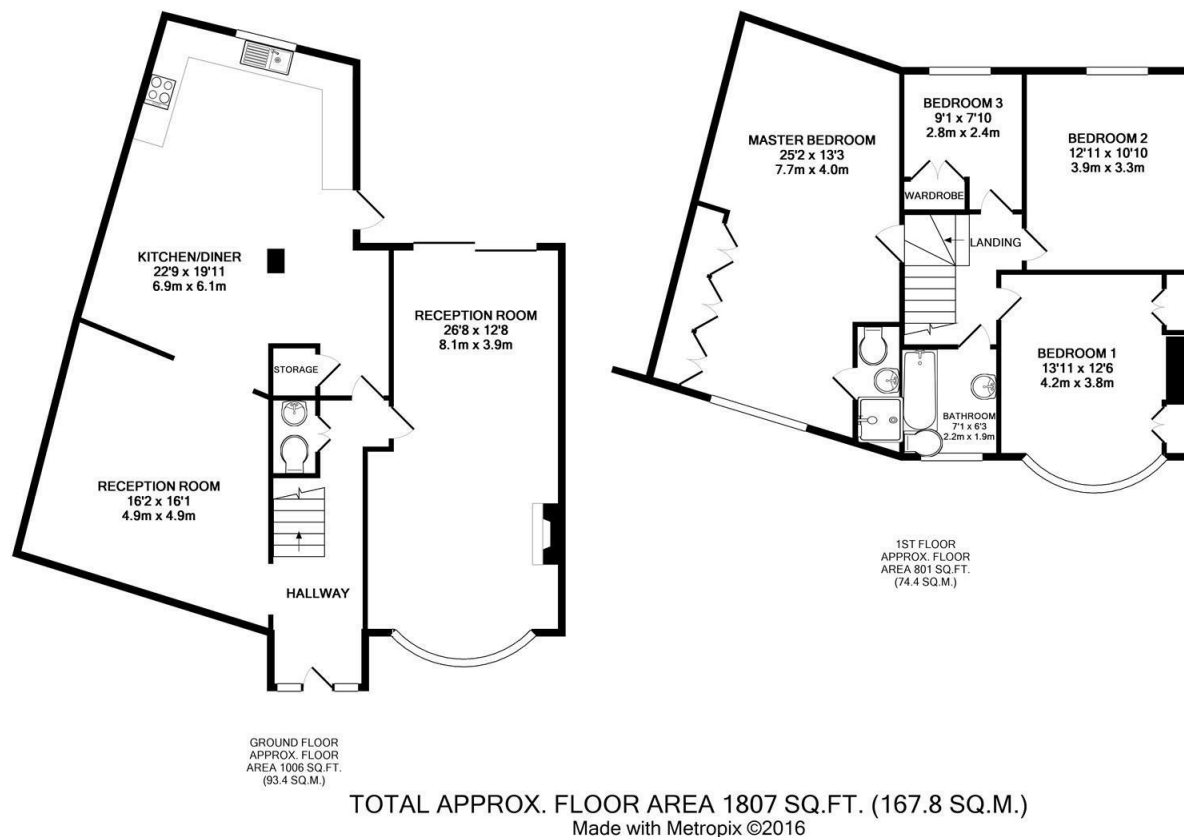


**Parkwood Road  
Isleworth  
TW7 5HE**

**£725,000**





- Viewings accompanied by Chase Buchanan
- Extended kitchen/breakfast room
- Off street parking
- Excellent condition
- Four bedroom family home
- Bold corner plot
- Private garden
- Chain free

This substantial extended family home boasts spacious living accommodation in excess of 1810sqft.

The accommodation comprises a bay fronted double reception, a further reception, large open plan kitchen/diner and guest wc on the ground floor, whilst the first floor has four bedrooms, one of which has an en-suite shower room and a family bathroom. Externally there is an approximate 55ft rear garden and a large own drive providing off street parking.

Positioned on this corner plot within the highly regarded 'Duke of Northumberland' area, the property lays less than half a mile from Isleworth BR Station and many reputable nearby schools including Nishkam School West London.

An appointment to view is highly recommended via the vendors selling agents Chase Buchanan at the earliest opportunity.

EPC Rating E

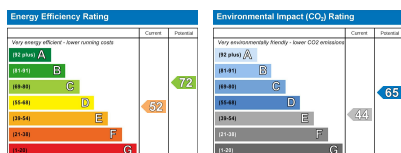
For more information or to book a viewing, please contact:

**020 8758 1755**

isleworth@chasebuchanan.london

7 Odeon Parade, 480 London Road,  
Isleworth, Middlesex, TW7 4DE

**Chase Buchanan**  
*Our community, your home*



Care has been taken in the preparation of these particulars, however, their accuracy is not guaranteed and they do not form part of any contract. Measurements stated must be considered maximum.