

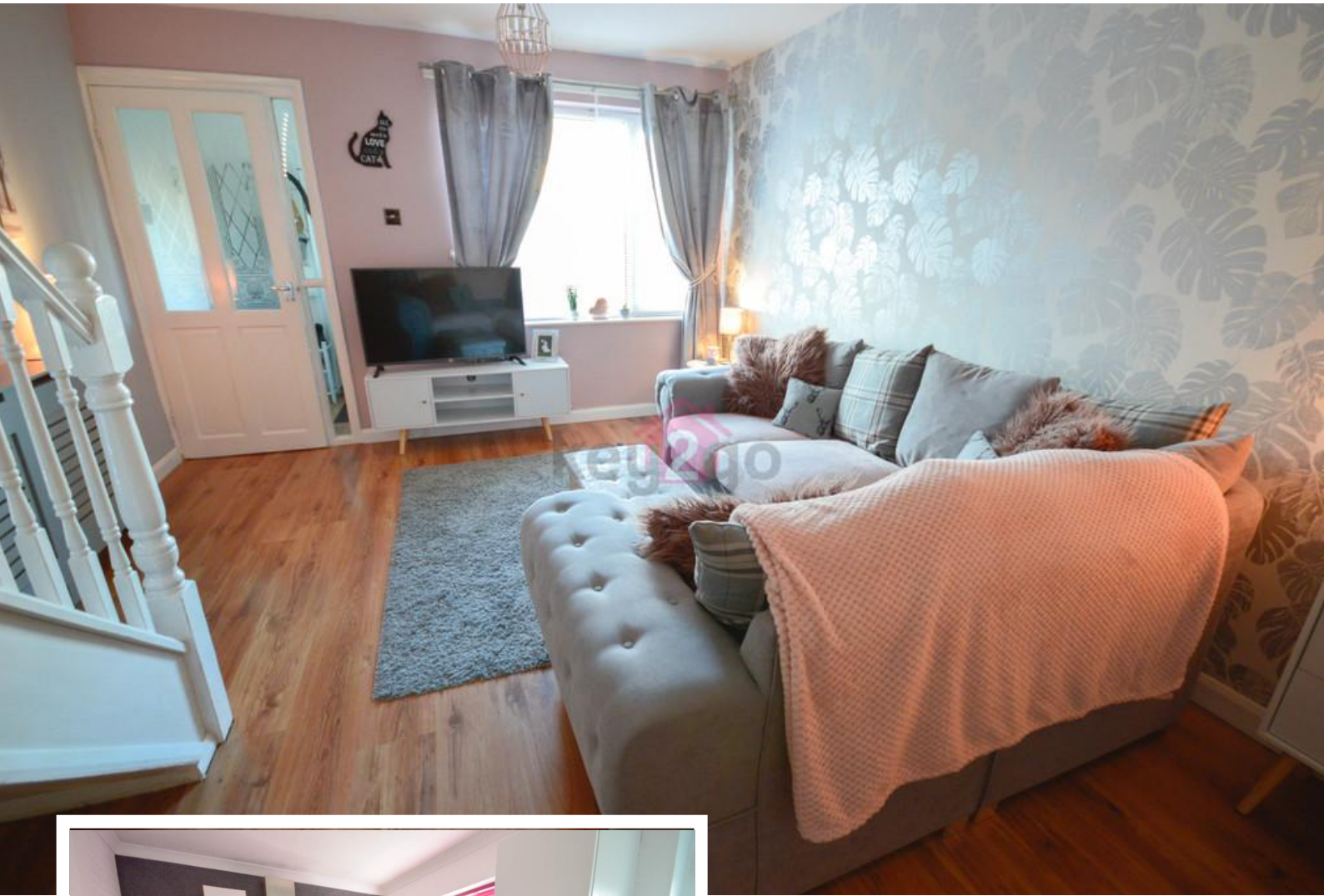


## Meadowcroft Rise, Westfield, Sheffield, S20

A beautifully presented, deceptively spacious two double bed roomed property with enclosed garden and off road parking. Completely refurbished by the current vendor. Situated in a popular residential area, close to shops and schools.

## Asking Price Of £108,000

- TWO DOUBLE BEDROOMS
- MID TERRACE HOUSE
- MODERN AND SPACIOUS THROUGHOUT
- OFF ROAD PARKING
- ENCLOSED REAR GARDEN



## Property Description

A beautifully presented, deceptively spacious two double bedded property with enclosed garden and off road parking. Completely refurbished by the current vendor. Situated in a popular residential area, close to shops and schools.

### PORCH

Entrance through a UPVC door into the handy porch with neutral decor. Door to the lounge.

### LOUNGE/DINER

11' 7" x 19' 6" (3.55m x 5.96m)

Bright and spacious with modern decor. Ceiling light, radiator and front facing window. Smoke alarm. Stairs rise to the first floor landing. Door into the kitchen.



## Meadowcroft Rise, Westfield, Sheffield, S20



### KITCHEN

11' 7" x 7' 10" (3.55m x 2.39m)

Fitted with ample wall and base units with contrasting work top. Integrated electric oven, hob and extractor. Space for a full height fridge/freezer and washing machine. Sink with a mixer tap. Breakfast bar, neutral decor and laminate flooring. Ceiling light, radiator and window. Door to the rear garden.

### STAIRS & LANDING

Carpeted stairs rise to the first floor landing with neutral decor, ceiling light and smoke alarm. Loft access. Doors to the two bedrooms and bathroom.



### BEDROOM 1

11' 8" x 10' 5" (3.58m x 3.19m)

A front facing double bedroom with neutral decor and carpeted flooring. Ceiling light, radiator and window.

### BEDROOM 2

11' 8" x 7' 8" (3.56m x 2.35m)

A further double bedroom with feature wallpapered wall and carpeted flooring. Fitted wardrobe, ceiling light and radiator. Window overlooking the rear garden.



### BATHROOM

5' 7" x 7' 4" (1.72m x 2.26m)

With fully tiled walls and flooring. Bath with a folding screen and electric shower. Vanity unit with wash basin and back to the wall WC. Ceiling light, ladder style radiator and window.

### OUTSIDE

There is off road parking to the side of the property.

The enclosed rear garden has a decked area, patio and pebble border. Shed.

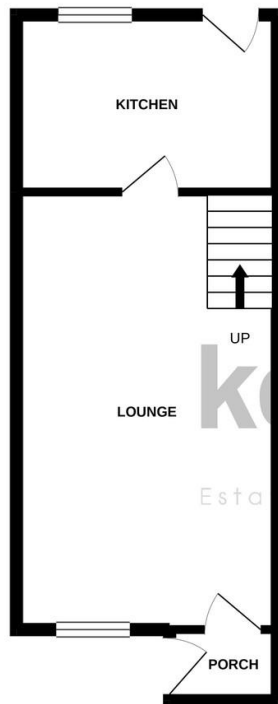
### PROPERTY DETAILS

- MAJORITY UPVC DOUBLE GLAZED (except back door and bathroom window)
- GAS CENTRAL HEATING
- TRADITIONAL BOILER
- FREEHOLD

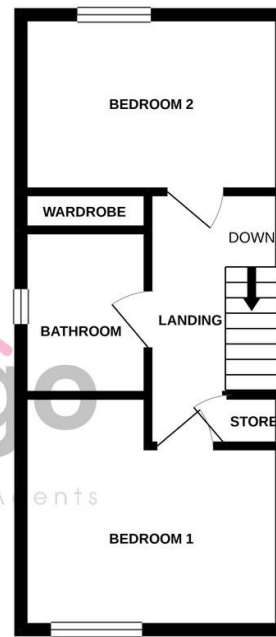


## Meadowcroft Rise, Westfield, Sheffield, S20

GROUND FLOOR  
333 sq.ft. (31.0 sq.m.) approx.



1ST FLOOR  
318 sq.ft. (29.6 sq.m.) approx.



key2go  
Estate & Letting Agents

TOTAL FLOOR AREA : 652 sq.ft. (60.6 sq.m.) approx.

Whilst every attempt has been made to ensure the accuracy of the floorplan contained here, measurements of doors, windows, rooms and any other items are approximate and no responsibility is taken for any error, omission or mis-statement. This plan is for illustrative purposes only and should be used as such by any prospective purchaser. The services, systems and appliances shown have not been tested and no guarantee as to their operability or efficiency can be given.  
Made with Metropix ©2020

### Tenure

Freehold

### Council Tax Band

A

### Viewing Arrangements

Strictly by appointment

### Contact Details

38a High Street

Mosborough

Sheffield

South Yorkshire

S20 5AE

[www.key2go.co.uk](http://www.key2go.co.uk)

[enquiries@key2go.co.uk](mailto:enquiries@key2go.co.uk)

0114 2478819

## EPC TO BE CONFIRMED

Agents Note: Whilst every care has been taken to prepare these sales particulars, they are for guidance purposes only. All measurements are approximate and for general guidance purposes only and whilst every care has been taken to ensure their accuracy, they should not be relied upon and potential buyers are advised to recheck the measurements.

rightmove

Zoopla



PrimeLocation  
Find the home you deserve

nTheMarket.com

naea | propertymark  
PROTECTED

arla | propertymark  
PROTECTED

