



Little Newport Street, Chinatown, WC2H
£750 pw

› 2 Bedrooms › 2 Bathroom › Unfurnished

TAVISTOCKBOW
RESIDENTIAL



- › Two double bedrooms
- › Two bathrooms (one en-suite)
- › Fourth floor (walk-up)
- › Recently refurbished
- › Wooden floors throughout
- › Unfurnished
- › Built in storage in both bedrooms
- › Semi open plan kitchen
- › Moments from Leicester Square station
- › Available early March

Beautifully presented unfurnished two bedroom apartment to rent on the corner of Charing Cross Road and Little Newport Street. Located in the heart of the West End, this new development is only a short walk from Leicester Square and Piccadilly Circus. The apartment has high ceilings throughout, a large semi open plan kitchen

and two spacious double bedrooms with ample built in storage. The property is available in March and is unfurnished (photos show indicative furniture).

Council tax band G.





WHAT WE LOVE

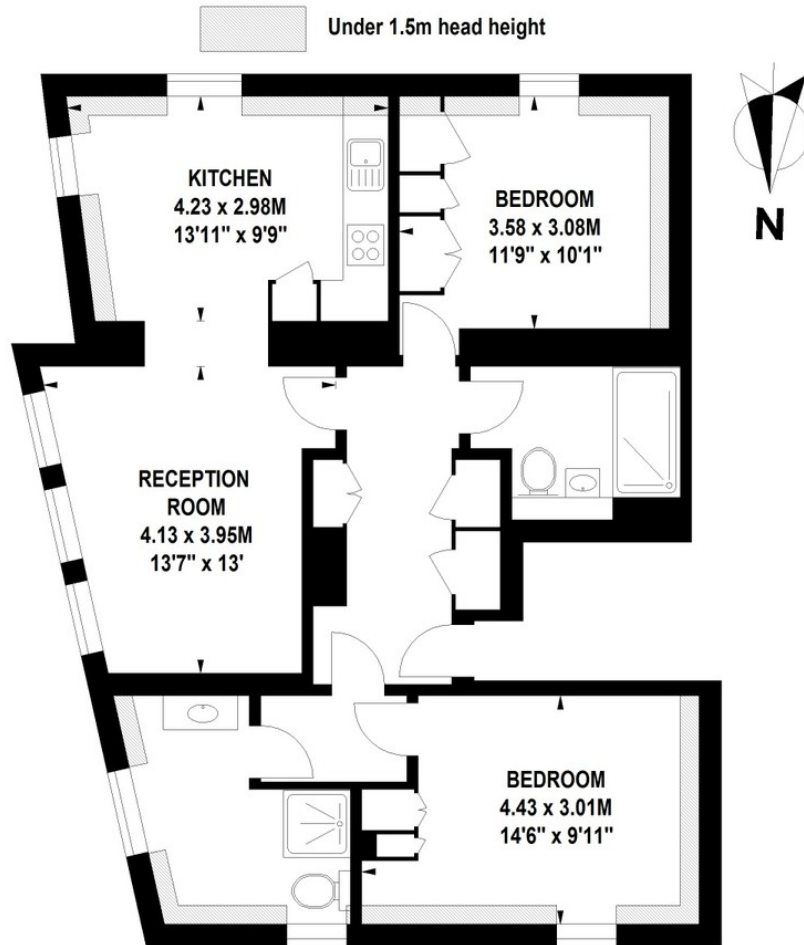
Recently refurbishment
Heart of the West End
High end kitchen and bathrooms
Top floor
Beautiful built in storage.

WHAT YOU NEED TO KNOW

Fourth floor (walk-up)
Secondary glazing
Moments from Leicester Square station
Wooden floors throughout
Available unfurnished.

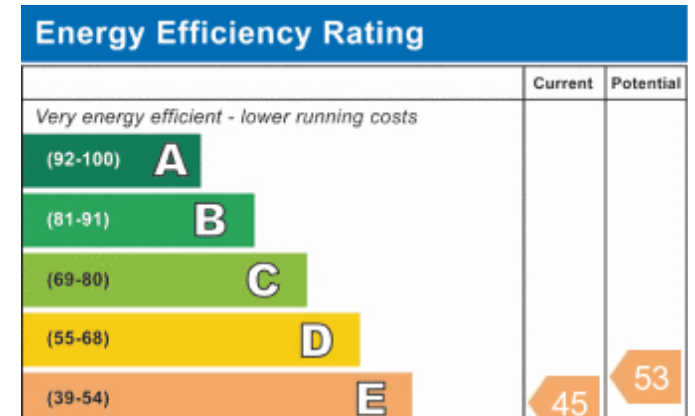
Charing Cross Road, WC2

Approximate Gross Internal Area 80 sq m / 861 sq ft



Fourth Floor




Floor Plan produced for Tavistock Bow by Mays Floorplans © . Tel 020 3397 4594
Illustration for identification purposes only, not to scale
All measurements are maximum, and include wardrobes and window bays where applicable



About Us

Tavistock Bow is an independent residential agency based in Covent Garden. We are niche, boutique, creative, knowledgeable, professional and approachable. We love what we do and that's why we do it.

Contact Us

- a.** 21 New Row, Covent Garden, WC2N 4LE  /tavistockbow
- t.** 020 7477 2177  /tavistockbow
- e.** hello@tavistockbow.com  @tavistockbow
- w.** tavistockbow.com