



Austcliff Close, Crabbs Cross, Redditch B97 5NZ | £315,000
Four Bedroom Link Detached

Features:

- Four Bedrooms
- Master Bedroom With Walk in Dressing Room and En-suite.
- Two Reception Rooms
- Breakfast Kitchen
- Lounge
- Integral Garage With Off Road Parking

Summary:

A wonderfully presented four bedroom link detached property, offering a master suite that includes a walk in dressing room and en-suite, situated in the popular district of Crabbs Cross, Redditch. This home is being sold on a chain free basis.

Description:

This property has been lovingly maintained throughout and offers a wealth of living space. The accommodation in brief comprises:- an enclosed entrance porch leading into a beautifully presented lounge with a front aspect bay window. The breakfast kitchen has modern fitted units, space for free standing appliances and room for a table and chairs. The dining room offers a more formal setting and has access to the rear garden and integral garage. The first floor continues in presentation and décor with a wonderful master bedroom benefiting from a walk in dressing area and en-suite. Bedroom two and three are of good proportion with bedroom four of single use. The family bathroom is modern in style and has a bath with shower over, sink and WC.

Outside:

The front aspect of the property has a tarmac laid drive with a gravelled fore garden and path leading to the main enclosed entrance porch. The rear garden has a large decked patio perfect for dining or entertaining with a neatly maintained lawn and further seating area at the rear of the garden.

Location:

Austcliff Close is situated in the popular area of Crabbs Cross, with the town of Redditch offering easy access to motorway links (M42, Jct 2&3) and good rail and bus links. There are also excellent leisure facilities along with cultural attractions, and the Kingfisher Shopping Centre.

Room Dimensions:

Porch

Lounge:

15' 5" x 14' 7" (4.72m x 4.45m)

Breakfast Kitchen:

14' 7" x 8' 4" (4.45m x 2.55m)

Dining Room:

12' 0" x 7' 9" (3.68m x 2.38m)

Garage:

18' 6" x 7' 10" (5.65m x 2.40m)

Stairs To First Floor Landing

Master Bedroom:

12' 1" x 7' 8" (3.70m x 2.35m)

En Suite:

7' 8" x 7' 3" (2.35m x 2.23m) max

Dressing Room:

7' 8" x 6' 2" (2.35m x 1.90m) max

Bedroom Two:

13' 11" x 8' 2" (4.25m x 2.50m)

Bedroom Three:

10' 4" x 8' 2" (3.15m x 2.50m)

Bedroom Four:

9' 6" x 6' 3" (2.90m x 1.92m)

Bathroom:

7' 2" x 6' 2" (2.20m x 1.88m)

EPC: D

Council Tax Band: D

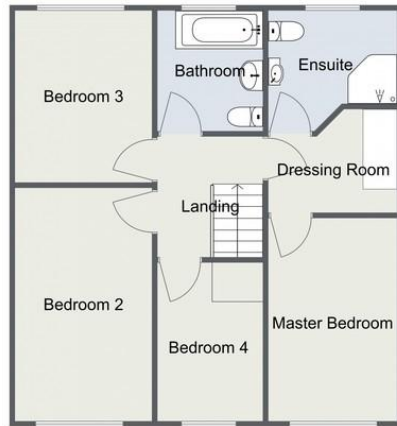
Tenure: Freehold

For more information on Austcliff Close or to arrange a viewing, please call the Redditch Office on 01527 540 654

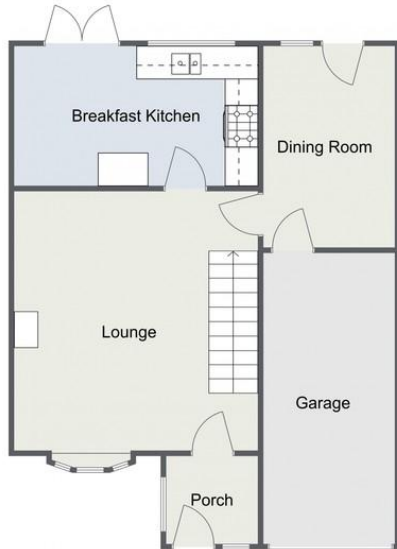


Austcliffe Close, Redditch

First Floor



Ground Floor



Total Area Approx:
111.1 sq metres (1196 sq ft)

For illustrative purposes only. Decorative finishes, fixtures & fittings do not represent the current state of the property. Measurements are approximate & not to scale. Floor Plans made using RoomSketcher.

Austcliffe Close, Redditch

First Floor



Ground Floor



Total Area Approx:
111.1 sq metres (1196 sq ft)

For illustrative purposes only. Decorative finishes, fixtures & fittings do not represent the current state of the property. Measurements are approximate & not to scale. Floor Plans made using RoomSketcher.

Please read the following: These particulars are for general guidance only and are based on information supplied and approved by the seller. Complete accuracy cannot be guaranteed and may be subject to errors and/or omissions. They do not constitute a contract or part of a contract in any way. We are not surveyors or conveyancing experts therefore we cannot and do not comment on the condition, issues relating to title or other legal issues that may affect this property. Interested parties should employ their own professionals to make enquiries before carrying out any transactional decisions. Photographs are provided for illustrative purposes only and the items shown in these are not necessarily included in the sale, unless specifically stated. The mention of any fixtures, fittings and/or appliances does not imply that they are in full efficient working order and they have not been tested. All dimensions are approximate. We are not liable for any loss arising from the use of these details.