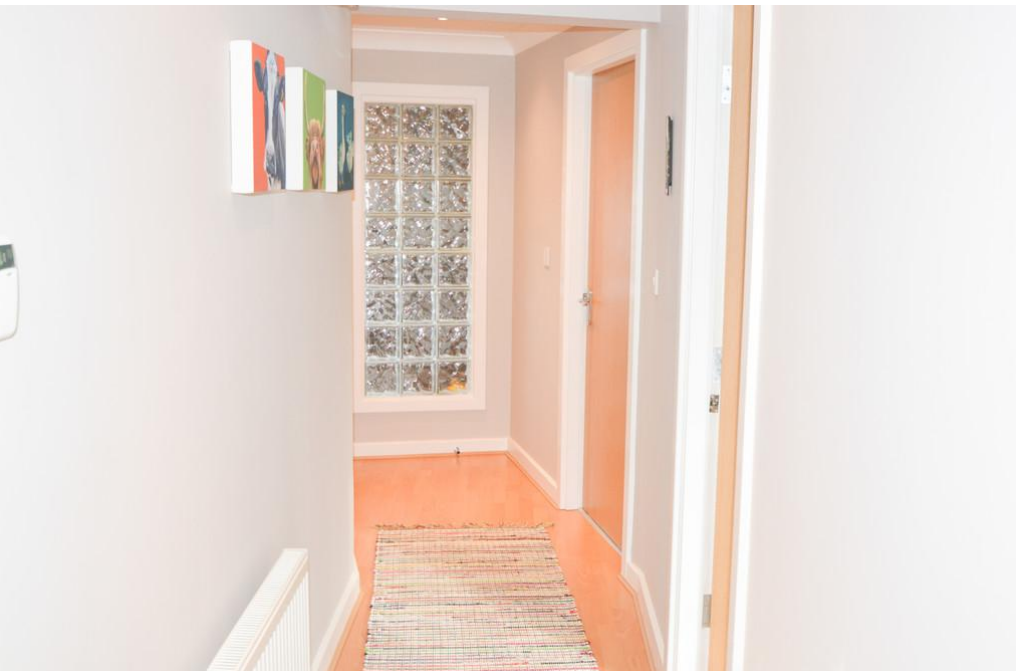




mark antony

SALES & LETTING AGENTS



**Stansfield Drive, Grappenhall**

Warrington, Cheshire, WA4 3EA

**Rent £725 pcm**

Part Furnished



## Property Features

- ❑ Modern 1 Bedroom Apartment
- ❑ Open Planned Living Area
- ❑ Master Bedroom with Built in Wardrobes
- ❑ Allocated Parking
- ❑ EPC Rating: C                      Council Tax Band: C

## Full Description

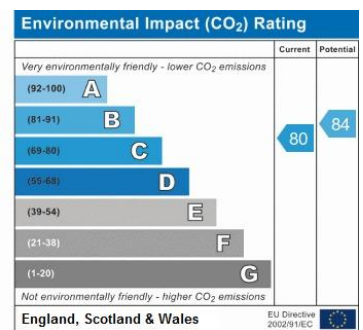
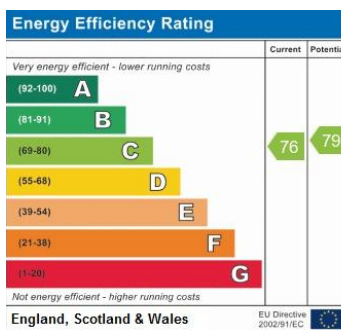
Modern one bedroom apartment in Grappenhall Heys. Beautiful open plan kitchen with integrated appliances, lounge. Master bedroom with built in wardrobes. Family bathroom with three-piece white suite and shower over bath. Allocated parking to the rear of the property. Excellent motorway access.

### Notes to Potential Tenant:

Appliances include Oven, hob and extractor fan  
Washer/dryer, fridge/freezer, washing machine dining table & chairs, side table, coffee table, sofa, tv stand, smart tv, dishwasher, shoe rack, chest of drawers, mirror, bed, bedside tables, office desk, office chair, coat rack are supplied on a non repairable non replaceable basis.

Landlord is current in a 1 year contract with EON for both the Gas and Electric and this cant be changed till September 2021. The Landlord has Broadband with Vodafone and is in a fixed contract till October 2022. So tenants cant change this.

**Available from: 26th July 2021**



82 London Road  
Stockton Heath  
Warrington  
Cheshire  
WA4 6LE

www.MarkAntonyEstates.com  
Lettings@MarkAntonyEstates.com  
01925 267070

### Notes:

- 1) Mark Antony Estates has produced this brochure in good faith, the details are set out as a general guide only and do not constitute any part of any contract. Any appliances, services or socket outlets or cables including: Electrical, Telephone, TV and Satellite have not been tested and are not guaranteed.
- 2) Any interested party should satisfy themselves about any matter of importance to them and not be solely reliant on the contents of this brochure before making a decision to rent.