



OCEANIS APARTMENTS, ROYAL VICTORIA DOCK, LONDON, E16 1BY



OCEANIS APARTMENTS, ROYAL VICTORIA DOCK, E16

£142,500





FOR SALE

OCEANIS APARTMENTS, ROYAL VICTORIA DOCK, E16

£142,500 Leasehold



- + Ref: 11986
- + Availability: For Sale
- + Bedrooms: 2

PROPERTY FEATURES

- + Two Bedroom Apartment
- + 8th Floor Location
- + 670 Sq. Ft Internally
- + Secure Gated Parking
- + 24 Hour Concierge
- + Service Charge; £4,801.32 Per Annum
- + Ground Rent Included in Service Charge
- + Lease Length Remaining: 112 Years
- + Council Tax: Band D
- + Bathrooms: 1
- + Reception Rooms: 1
- + Tenure: Leasehold

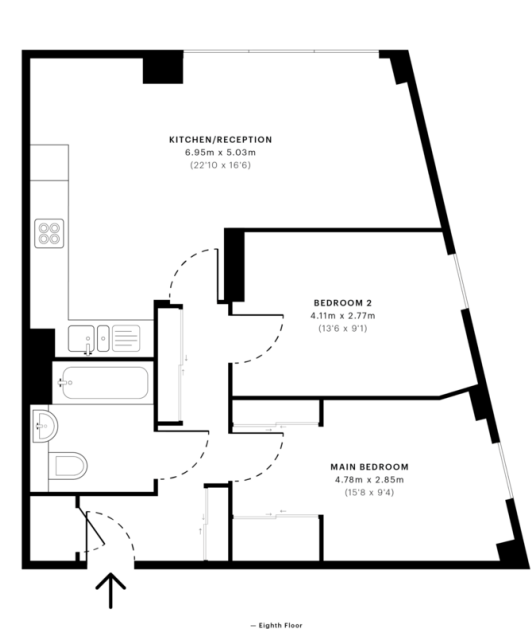
PROPERTY SUMMARY

** SHARED OWNERSHIP - 30% SHARE
 ** This beautifully presented two-bedroom apartment is located on the 8th floor of Oceanis Apartments, boasting floor to ceiling windows allowing lots of natural light and stunning views out to the marina.

Situated over 670 Sq. Ft internally the property offers a bright and airy open plan living and kitchen area with modern integrated appliances.

Energy Efficiency Rating		Current	Potential
Very energy efficient - lower running costs			
(92-100) A			
(81-91) B		82	83
(69-80) C			
(55-68) D			
(39-54) E			
(21-38) F			
(1-20) G			
Not energy efficient - higher running costs			
England, Scotland & Wales		EU Directive 2002/91/EC	

MADISON BROOK INTERNATIONAL Oceanis Apartments, E16
 CAPTURE DATE: 06/11/2020 LAZER SCAN POINTS: 2,736,083 GROSS INTERNAL AREA: 62.25 sqm / 670.05 sqft



SPECIFIED FLOOR PLANS ARE PRODUCED IN ACCORDANCE WITH ROYAL INSTITUTION OF CHARTERED SURVEYORS PROPERTY MEASUREMENT STANDARDS. PLOTS AND GARDENS ARE ILLUSTRATIVE ONLY AND EXCLUDED FROM ALL AREA CALCULATIONS. DUE TO ROUNDING, NUMBERS MAY NOT ADD UP EXACTLY. ALL MEASUREMENTS SHOWN FOR THE INDIVIDUAL ROOM LENGTHS AND WIDTHS ARE THE MAXIMUM POINTS OF MEASUREMENTS CAPTURED IN THE SCAN.

RICS CERTIFIED PROPERTY MEASUREMENT

GROSS INTERNAL AREA (GIA)
 62.25 sqm / 670.05 sqft

NET INTERNAL AREA (NIA)
 58.48 sqm / 630.24 sqft

EXTERNAL STRUCTURAL FEATURES
 0.00 sqm / 0.00 sqft

RESTRICTED HEAD HEIGHT
 0.00 sqm / 0.00 sqft

SPEC INTERNAL: 62.25 sqm / 670.05 sqft
 SPEC EXTERNAL: 59.90 sqm / 648.76 sqft

SPEC: 35/27/10/1-A/2/0/0/0/0/0/0

Madison Brook International
 Unit B, 20 Western Gateway, Royal Victoria Dock, London, E16 1BS
 T: 020 3946 6000
 E: docklands@madisonbrook.com
MADISONBROOK.COM

MADISON BROOK INTERNATIONAL

Madison Brook International
 @MadisonBrookInt

