



Beaconsfield Terrace, Birtley, Chester Le Street

£495pcm

Property Features

- Two Bedroom First Floor Flat
- EPC Rating C
- Spacious Accommodation
- Modern Fitted Bathroom
- Master Bedroom & EnSuite

Full Description

SUPERB first floor flat which has been RENOVATED THROUGHOUT! In brief, the property comprises; entrance hall, SPACIOUS LOUNGE, MODERN FITTED KITCHEN, two bedrooms, including master with en-suite and large bathroom. To the front is a shared forecourt whilst to the rear is a private yard. Situated on the edge of Birtley with fantastic access to all transport links.

Located close to Birtley town centre with access via the A167 to Newcastle City Centre and surrounding areas. Warmed by gas central heating and improved with double glazing. Externally there is private rear yard on two levels with decked seating area.

ENTRANCE HALL

Entered via composite door leading into the hallway and stairs to the first floor.

LIVING ROOM

Double glazed window to the front and rear, radiator and feature fireplace.

KITCHEN

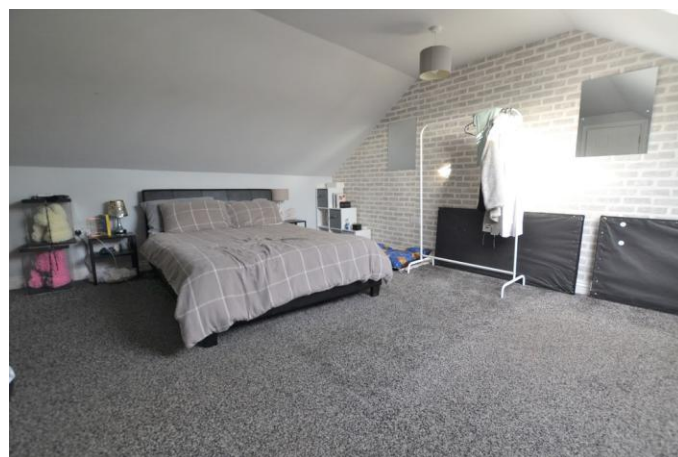
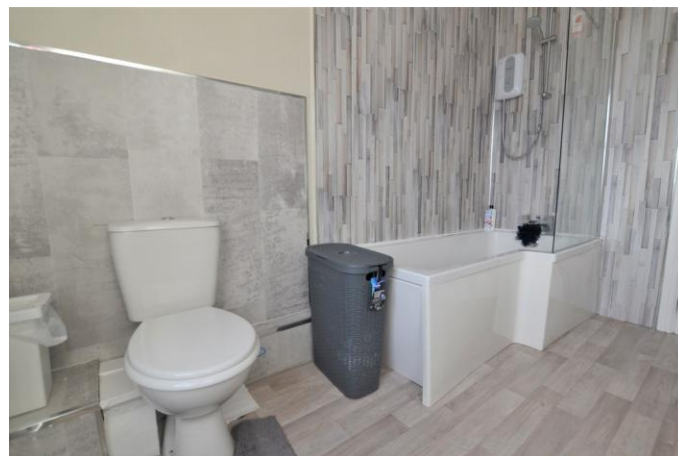
A range of wall and base units with integrated hob and oven. Access to the rear and double glazed window.

BATHROOM

White suite including panelled bath with shower overhead, wash hand basin and low level WC.

MASTER BEDROOM & EN-SUITE

Double bedroom with carpet and double glazed windows. Entrance into the en-suite fitted with low level toilet and wash basin.



BEDROOM TWO

Double glazed windows, carpet and radiator.





Score	Energy rating	Current	Potential
92+	A		
81-91	B		
69-80	C	70 C	76 C
55-68	D		
39-54	E		
21-38	F		
1-20	G		

Boston House
Unit 2 Fifth Avenue
Team Valley Trading
Estate
Gateshead

www.sevenkeys.co.uk
info@sevenkeys.co.uk
0191 4971797

Agents Note: Whilst every care has been taken to prepare these particulars, they are for guidance purposes only. All measurements are approximate and are for general guidance purposes only and whilst every care has been taken to ensure their accuracy, they should not be relied upon and potential buyers/tenants are advised to recheck the measurements